



MLS 6744832 Lake Home

**\$449,900**

3,100 sq ft  
4 bedrooms  
3 baths

344 County 118  
Backus MN 56435

Waterfront: Little Hattie Lake

Status: Active

#### Description:

Live the quiet life in this lodge-style 4 bedroom, 3 bath home featuring recent updates and thoughtful additions including: New roofs in 2024, new south side windows, septic drainfield, well pump, new appliances and much more. Nestled on 10 wooded acres with over 300 feet of private shoreline on Little Hattie Lake and channel access to Lake Hattie—this is a truly rare and unique find. Spacious enough to host family and friends, it's perfect for lakeside fun, outdoor adventures, and making lasting memories. Just 20 minutes from the shops and restaurants of Pine River, this Up North retreat offers space, privacy, and year-round recreation in a stunning natural setting. Seller will consider seller private financing.

#### Additional Details:

Year Built	1996
Lot Acres	10
Lot Dimensions	324x1231x384xirr
Garage Stalls	3
School District	2174
Taxes	\$1,778
Taxes with Assessments	\$1,844
Tax Year	2025

#### Additional Features:

**Basement:** Partial, Partially Finished **Fuel:** Electric, Propane, Wood **Garage:** 3 **Heat:** Baseboard, Dual, Forced Air, Fireplace(s), Hot Water, Wood Stove **Sewer:** Tank with Drainage Field **Water:** Well **Air Conditioning:** Central Air

#### Driving Directions:

From Hackensack, south on Hwy 371 to east on 87 (Godfreys) approx 6.5 miles to right on 20th Avenue to right on CR 118 to property on right.



Listed By:  
eXp Realty

Affinity Real Estate Inc. participates in the Regional Multiple Listing Service of Minnesota, Inc Broker Reciprocity (sm) program, allowing us to display other broker's listings on our website. All properties are subject to prior sale, change or withdrawal.



Call Affinity Real Estate

**218-237-3333**

[info@affinityrealestate.com](mailto:info@affinityrealestate.com)



Affinity Real Estate - 600 Park Avenue South - Park Rapids MN 56470



website: [www.AffinityRealEstate.com](http://www.AffinityRealEstate.com) | email: [info@affinityrealestate.com](mailto:info@affinityrealestate.com) | office: 218-237-3333 | fax: 218-237-3377

**Affinity**  
REAL ESTATE INC

**\$449,900**  
MLS 6744832 Lake Home  
344 County 118  
Backus MN 56435





website: [www.AffinityRealEstate.com](http://www.AffinityRealEstate.com) | email: [info@affinityrealestate.com](mailto:info@affinityrealestate.com) | office: 218-237-3333 | fax: 218-237-3377

**Affinity**  
REAL ESTATE INC

**\$449,900**  
MLS 6744832 Lake Home  
344 County 118  
Backus MN 56435



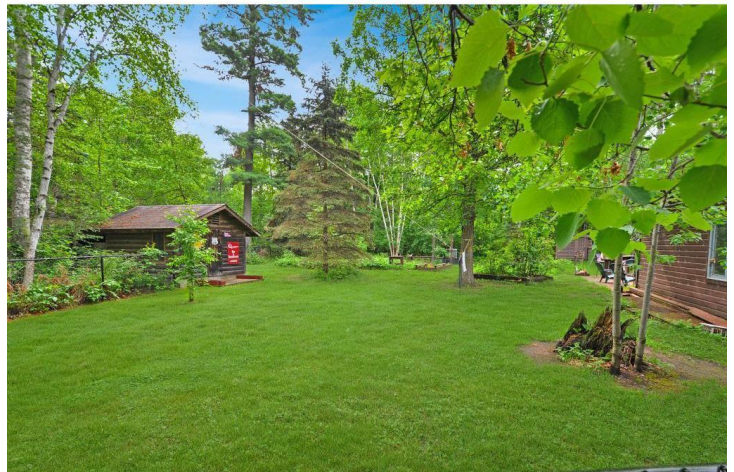


website: [www.AffinityRealEstate.com](http://www.AffinityRealEstate.com) | email: [info@affinityrealestate.com](mailto:info@affinityrealestate.com) | office: 218-237-3333 | fax: 218-237-3377

**Affinity**  
REAL ESTATE INC

**\$449,900**  
MLS 6744832 Lake Home  
344 County 118  
Backus MN 56435



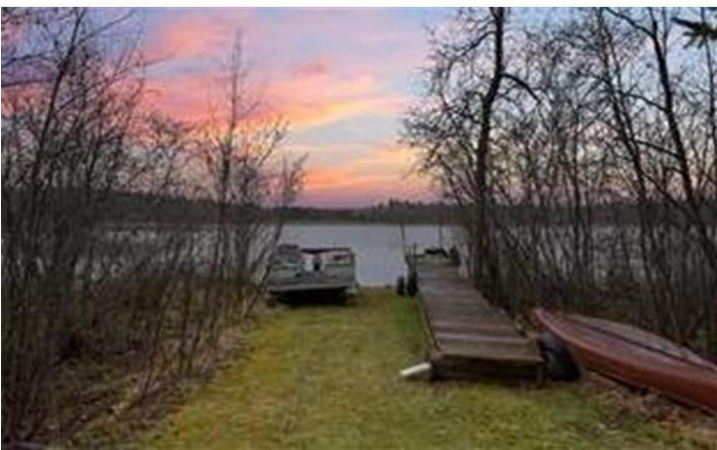


website: [www.AffinityRealEstate.com](http://www.AffinityRealEstate.com) | email: [info@affinityrealestate.com](mailto:info@affinityrealestate.com) | office: 218-237-3333 | fax: 218-237-3377



**\$449,900**  
MLS 6744832 Lake Home  
344 County 118  
Backus MN 56435





website: [www.AffinityRealEstate.com](http://www.AffinityRealEstate.com) | email: [info@affinityrealestate.com](mailto:info@affinityrealestate.com) | office: 218-237-3333 | fax: 218-237-3377



**\$449,900**  
 MLS 6744832 Lake Home  
 344 County 118  
 Backus MN 56435



website: [www.AffinityRealEstate.com](http://www.AffinityRealEstate.com) | email: [info@affinityrealestate.com](mailto:info@affinityrealestate.com) | office: 218-237-3333 | fax:218-237-3377



**\$449,900**  
MLS 6744832 Lake Home  
344 County 118  
Backus MN 56435

website: [www.AffinityRealEstate.com](http://www.AffinityRealEstate.com) | email: [info@affinityrealestate.com](mailto:info@affinityrealestate.com) | office: 218-237-3333 | fax:218-237-3377



**\$449,900**

MLS 6744832 Lake Home  
344 County 118  
Backus MN 56435



website: [www.AffinityRealEstate.com](http://www.AffinityRealEstate.com) | email: [info@affinityrealestate.com](mailto:info@affinityrealestate.com) | office: 218-237-3333 | fax:218-237-3377



**\$449,900**

MLS 6744832 Lake Home  
344 County 118  
Backus MN 56435

website: [www.AffinityRealEstate.com](http://www.AffinityRealEstate.com) | email: [info@affinityrealestate.com](mailto:info@affinityrealestate.com) | office: 218-237-3333 | fax:218-237-3377



**\$449,900**

MLS 6744832 Lake Home  
344 County 118  
Backus MN 56435



website: [www.AffinityRealEstate.com](http://www.AffinityRealEstate.com) | email: [info@affinityrealestate.com](mailto:info@affinityrealestate.com) | office: 218-237-3333 | fax:218-237-3377



**\$449,900**

MLS 6744832 Lake Home  
344 County 118  
Backus MN 56435