



MLS 6744929 Lake Home

**\$1,250,000**

3,847 sq ft  
5 bedrooms  
4 baths

509 Superior Avenue  
Crosby MN 56441

Waterfront: Serpent

Status: Active

#### Description:

Experience the perfect blend of modern luxury and serene lakeside living in this exquisitely remodeled five bedroom, four bathroom, home on the shores of coveted Serpent Lake. Every inch of this stunning property has been thoughtfully updated with high end finishes and designer touches-offering a turn-key lifestyle with style and sophistication. The spacious, open concept layout is ideal for entertaining, featuring a chef's kitchen with premium appliances, custom cabinetry, and expansive lake views. Multiple living areas provide space for relaxation and gathering, while generously sized bedrooms offer comfort and privacy for family or guests.

Outside enjoy direct access to the water, beautifully landscaped grounds, and a private setting just moments from the charm of downtown Crosby, Cuyuna's renowned bike trails, and area dining. Whether you're seeking a full-time residence or a luxury lakefront escape, this rare gem delivers an unparalleled lifestyle on one of the Brainerd lakes areas most picturesque lakes.

#### Additional Details:

Year Built	2006
Lot Acres	1.08
Lot Dimensions	394x250xirregular
Garage Stalls	5
School District	182
Taxes	\$7,346
Taxes with Assessments	\$7,346
Tax Year	2024

#### Additional Features:

**Basement:** Crawl Space, Concrete **Fuel:** Natural Gas **Garage:** 5 **Heat:** Forced Air, Fireplace(s), Radiant Floor **Sewer:** City Sewer/Connected  
**Water:** City Water/Connected **Air Conditioning:** Central Air

#### Driving Directions:

In Crosby on 210, to a right on Superior Ave to sign on left



Listed By:  
Northland Sotheby's International Realty

Affinity Real Estate Inc. participates in the Regional Multiple Listing Service of Minnesota, Inc Broker Reciprocity (sm) program, allowing us to display other broker's listings on our website. All properties are subject to prior sale, change or withdrawal.



Call Affinity Real Estate

**218-237-3333**

[info@affinityrealestate.com](mailto:info@affinityrealestate.com)



Affinity Real Estate - 600 Park Avenue South - Park Rapids MN 56470





website: [www.AffinityRealEstate.com](http://www.AffinityRealEstate.com) | email: [info@affinityrealestate.com](mailto:info@affinityrealestate.com) | office: 218-237-3333 | fax: 218-237-3377

**Affinity**  
REAL ESTATE INC

**\$1,250,000**

MLS 6744929 Lake Home  
509 Superior Avenue  
Crosby MN 56441





website: [www.AffinityRealEstate.com](http://www.AffinityRealEstate.com) | email: [info@affinityrealestate.com](mailto:info@affinityrealestate.com) | office: 218-237-3333 | fax: 218-237-3377

**Affinity**  
REAL ESTATE INC

**\$1,250,000**  
MLS 6744929 Lake Home  
509 Superior Avenue  
Crosby MN 56441





website: [www.AffinityRealEstate.com](http://www.AffinityRealEstate.com) | email: [info@affinityrealestate.com](mailto:info@affinityrealestate.com) | office: 218-237-3333 | fax: 218-237-3377

**Affinity**  
REAL ESTATE INC

**\$1,250,000**  
MLS 6744929 Lake Home  
509 Superior Avenue  
Crosby MN 56441





website: [www.AffinityRealEstate.com](http://www.AffinityRealEstate.com) | email: [info@affinityrealestate.com](mailto:info@affinityrealestate.com) | office: 218-237-3333 | fax: 218-237-3377

**Affinity**  
REAL ESTATE INC

**\$1,250,000**  
MLS 6744929 Lake Home  
509 Superior Avenue  
Crosby MN 56441





website: [www.AffinityRealEstate.com](http://www.AffinityRealEstate.com) | email: [info@affinityrealestate.com](mailto:info@affinityrealestate.com) | office: 218-237-3333 | fax: 218-237-3377



**\$1,250,000**  
 MLS 6744929 Lake Home  
 509 Superior Avenue  
 Crosby MN 56441





website: [www.AffinityRealEstate.com](http://www.AffinityRealEstate.com) | email: [info@affinityrealestate.com](mailto:info@affinityrealestate.com) | office: 218-237-3333 | fax: 218-237-3377



**\$1,250,000**  
 MLS 6744929 Lake Home  
 509 Superior Avenue  
 Crosby MN 56441





website: [www.AffinityRealEstate.com](http://www.AffinityRealEstate.com) | email: [info@affinityrealestate.com](mailto:info@affinityrealestate.com) | office: 218-237-3333 | fax: 218-237-3377

**Affinity**  
REAL ESTATE INC

**\$1,250,000**  
MLS 6744929 Lake Home  
509 Superior Avenue  
Crosby MN 56441





website: [www.AffinityRealEstate.com](http://www.AffinityRealEstate.com) | email: [info@affinityrealestate.com](mailto:info@affinityrealestate.com) | office: 218-237-3333 | fax: 218-237-3377



**\$1,250,000**

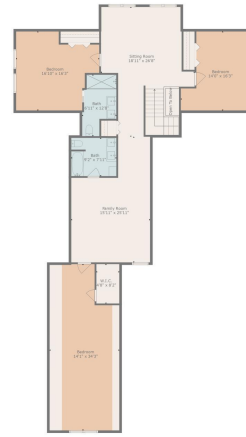
MLS 6744929 Lake Home  
509 Superior Avenue  
Crosby MN 56441





**TOTAL: 3847 sq. ft.**  
 FLOOR 1: 2141 sq. ft. FLOOR 2: 1706 sq. ft.  
 EXCLUDED AREAS: UTILITY: 87 sq. ft. SCREENED PORCH: 423 sq. ft. OPEN TO BELOW: 15 sq. ft.  
 LOW CEILING: 128 sq. ft.  
 WALLS: 274 sq. ft.

Floor Plan Created By Caliente App. Measurements Deemed Highly Reliable But Not Guaranteed.



**TOTAL: 3847 sq. ft.**  
 FLOOR 1: 2141 sq. ft. FLOOR 2: 1706 sq. ft.  
 EXCLUDED AREAS: UTILITY: 87 sq. ft. SCREENED PORCH: 423 sq. ft. OPEN TO BELOW: 15 sq. ft.  
 LOW CEILING: 128 sq. ft.  
 WALLS: 274 sq. ft.

Floor Plan Created By Caliente App. Measurements Deemed Highly Reliable But Not Guaranteed.



**TOTAL: 3847 sq. ft.**  
 FLOOR 1: 2141 sq. ft. FLOOR 2: 1706 sq. ft.  
 EXCLUDED AREAS: UTILITY: 87 sq. ft. SCREENED PORCH: 423 sq. ft. OPEN TO BELOW: 15 sq. ft.  
 LOW CEILING: 128 sq. ft.  
 WALLS: 274 sq. ft.

Floor Plan Created By Caliente App. Measurements Deemed Highly Reliable But Not Guaranteed.

website: [www.AffinityRealEstate.com](http://www.AffinityRealEstate.com) | email: [info@affinityrealestate.com](mailto:info@affinityrealestate.com) | office: 218-237-3333 | fax: 218-237-3377



**\$1,250,000**  
 MLS 6744929 Lake Home  
 509 Superior Avenue  
 Crosby MN 56441