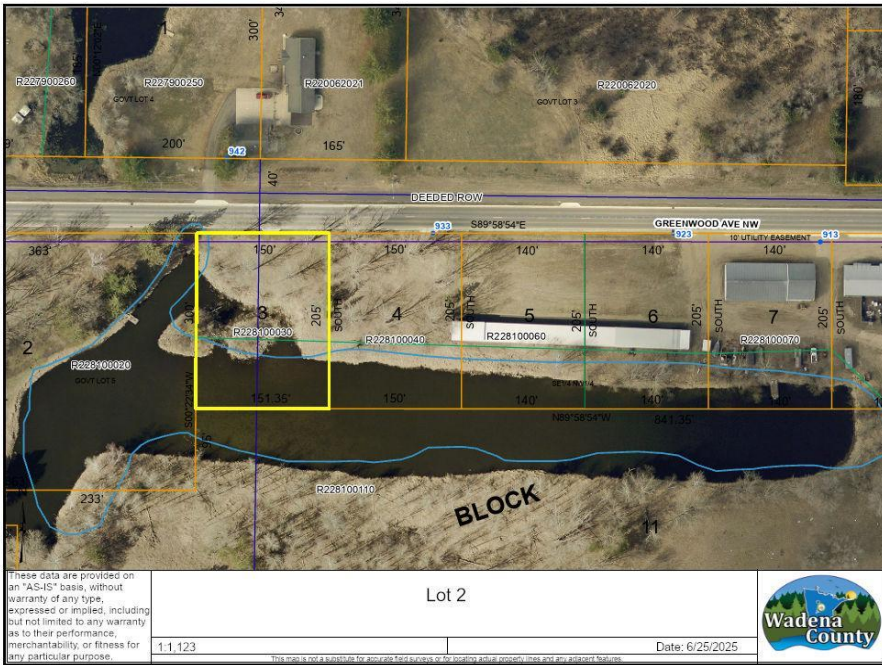




MLS 6745012 Lake Land

\$4,500



Description:

Not a huge lot but one with a view. arcel is approximately 1/2 pond 1/2 Commercial land. Room for a small shop or business.

Additional Details:

Lot Acres	0.71
Lot Dimensions	150x205
School District	2155
Taxes	\$66
Taxes with Assessments	\$66
Tax Year	2025

Additional Features:

Driving Directions:

From Wadena N on 2nd St NW to Deerwood Dr, then west to the sign



Listed By:
Premier Realty Group

Affinity Real Estate Inc. participates in the Regional Multiple Listing Service of Minnesota, Inc Broker Reciprocity (sm) program, allowing us to display other broker's listings on our website. All properties are subject to prior sale, change or withdrawal.



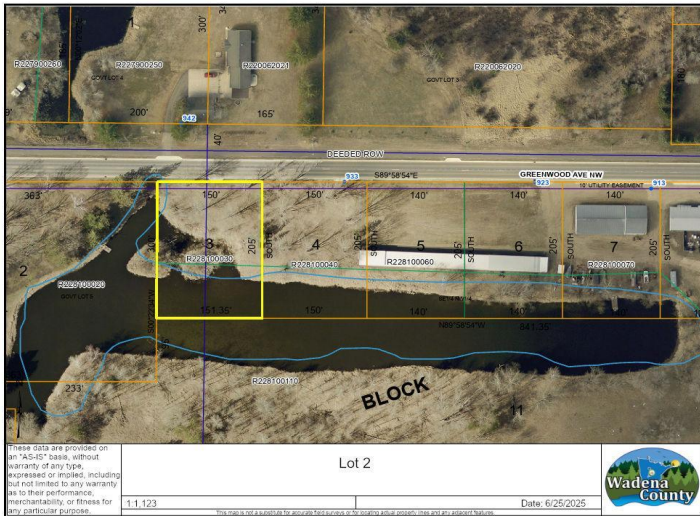
Call Affinity Real Estate

218-237-3333

info@affinityrealestate.com



Affinity Real Estate - 600 Park Avenue South - Park Rapids MN 56470



website: www.AffinityRealEstate.com | email: info@affinityrealestate.com | office: 218-237-3333 | fax: 218-237-3377



\$4,500
 MLS 6745012 Lake Land
 624 10th Street
 Wadena MN 56482