



MLS 6745036 Residential

\$330,000

2,944 sq ft
3 bedrooms
3 baths

1111 Timbers Drive
Park Rapids MN 56470

Status: Pending

Description:

Park Rapids city! Luxurious one-level living in "The Timbers" neighborhood. 3 bedrooms plus a large den/office and a wonderful floor plan with large rooms, a gas fireplace, spa-like main suite with a huge tile "roll-in" shower. And easy wheelchair access throughout. No stairs, super efficient heat, large fenced yard for the pets, updated air exchange and AC systems and a newly installed Kinetico water system. Attached garage is finished and heated with a floor drain. Over 2500 sq ft of wonderful living area with high ceilings and lots of light, bright interiors. You'll also love the gourmet kitchen with breakfast bar, cherry kitchen cabinets and cupboard space galore! \$330,000

Additional Details:

Year Built	2007
Lot Acres	0.43
Lot Dimensions	180x109x93x172
Garage Stalls	2
School District	309
Taxes	\$4,041
Taxes with Assessments	\$4,262
Tax Year	2025

Additional Features:

Fuel: Electric, Natural Gas **Heat:** Boiler, Forced Air, Fireplace(s), Radiant Floor, Zoned

Driving Directions:

From the junction of Hwy 34 and Hwy 71 in Park Rapids, head east on Hwy 34 for approximately 1 mile to County Road 6, (Northwoods Bank Corner) then go south (Right) for 2 blocks and turn right at Bergstrom Electric, follow around to the left and continue to 1111 Timbers Drive.



Listed By:
Keller Williams Realty Professionals

Affinity Real Estate Inc. participates in the Regional Multiple Listing Service of Minnesota, Inc Broker Reciprocity (sm) program, allowing us to display other broker's listings on our website. All properties are subject to prior sale, change or withdrawal.



Call Affinity Real Estate

218-237-3333

info@affinityrealestate.com



Affinity Real Estate - 600 Park Avenue South - Park Rapids MN 56470



website: www.AffinityRealEstate.com | email: info@affinityrealestate.com | office: 218-237-3333 | fax: 218-237-3377



\$330,000
 MLS 6745036 Residential
 1111 Timbers Drive
 Park Rapids MN 56470



website: www.AffinityRealEstate.com | email: info@affinityrealestate.com | office: 218-237-3333 | fax: 218-237-3377



\$330,000
 MLS 6745036 Residential
 1111 Timbers Drive
 Park Rapids MN 56470



website: www.AffinityRealEstate.com | email: info@affinityrealestate.com | office: 218-237-3333 | fax: 218-237-3377

Affinity
REAL ESTATE INC

\$330,000
MLS 6745036 Residential
1111 Timbers Drive
Park Rapids MN 56470



website: www.AffinityRealEstate.com | email: info@affinityrealestate.com | office: 218-237-3333 | fax: 218-237-3377

Affinity
REAL ESTATE INC

\$330,000
MLS 6745036 Residential
1111 Timbers Drive
Park Rapids MN 56470



website: www.AffinityRealEstate.com | email: info@affinityrealestate.com | office: 218-237-3333 | fax: 218-237-3377

Affinity
REAL ESTATE INC

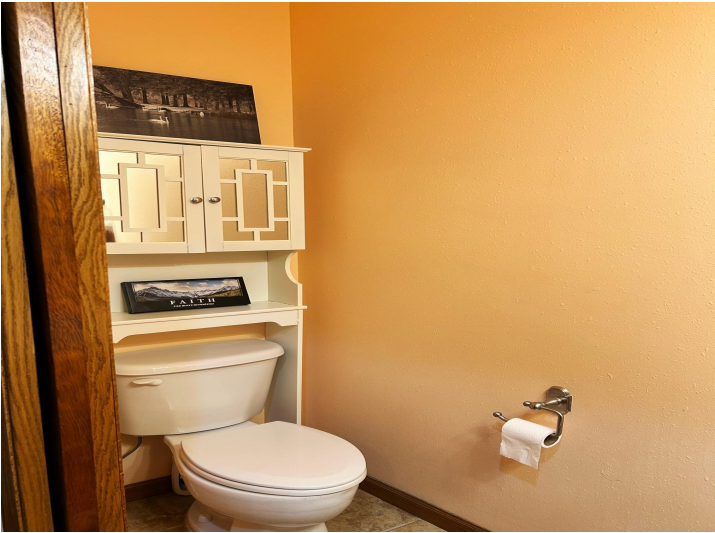
\$330,000
MLS 6745036 Residential
1111 Timbers Drive
Park Rapids MN 56470



website: www.AffinityRealEstate.com | email: info@affinityrealestate.com | office: 218-237-3333 | fax: 218-237-3377

Affinity
REAL ESTATE INC

\$330,000
MLS 6745036 Residential
1111 Timbers Drive
Park Rapids MN 56470



website: www.AffinityRealEstate.com | email: info@affinityrealestate.com | office: 218-237-3333 | fax: 218-237-3377



\$330,000
MLS 6745036 Residential
1111 Timbers Drive
Park Rapids MN 56470