



MLS 6745051 Residential

**\$209,900**

1,141 sq ft  
2 bedrooms  
1 baths

15965 Red Sand Circle  
Brainerd MN 56401

Status: Pending

**Description:**

Step into this beautifully refreshed one-level townhome, featuring a freshly painted interior that feels light, bright, and move-in ready. The open layout offers easy living all on one level—no stairs to worry about! Enjoy peaceful mornings or quiet evenings on your private deck overlooking a serene wooded area—no neighbors behind you, just nature and tranquility. All in the heart of the Brainerd Lakes Area, the HOA makes life even easier by covering lawn care, snow removal, heat, and garbage—giving you more time to relax and enjoy your home. Perfect for those seeking low-maintenance living in a quiet, natural setting. Come see it today!

**Additional Details:**

Year Built	1995
Lot Acres	0.06
Lot Dimensions	62x42
Garage Stalls	1
School District	181
Taxes	\$852
Taxes with Assessments	\$876
Tax Year	2025

**Additional Features:**

**Basement:** None **Fuel:** Natural Gas **Garage:** 1 **Heat:** Boiler, Hot Water **Sewer:** Private Sewer, Septic System Compliant - Yes, Shared Septic, Tank with Drainage Field **Water:** Drilled, Shared System, Well **Air Conditioning:** Wall Unit(s)

**Driving Directions:**

From Baxter Heading north on 371, left on County Rd 77, left at Red Sand Cir to 15965



Listed By:  
Exit Realty Hometown Advantage

Affinity Real Estate Inc. participates in the Regional Multiple Listing Service of Minnesota, Inc Broker Reciprocity (sm) program, allowing us to display other broker's listings on our website. All properties are subject to prior sale, change or withdrawal.



**Call Affinity Real Estate**

**218-237-3333**

**info@affinityrealestate.com**



**Affinity Real Estate - 600 Park Avenue South - Park Rapids MN 56470**





website: [www.AffinityRealEstate.com](http://www.AffinityRealEstate.com) | email: [info@affinityrealestate.com](mailto:info@affinityrealestate.com) | office: 218-237-3333 | fax: 218-237-3377

**Affinity**  
REAL ESTATE INC

**\$209,900**

MLS 6745051 Residential  
15965 Red Sand Circle  
Brainerd MN 56401



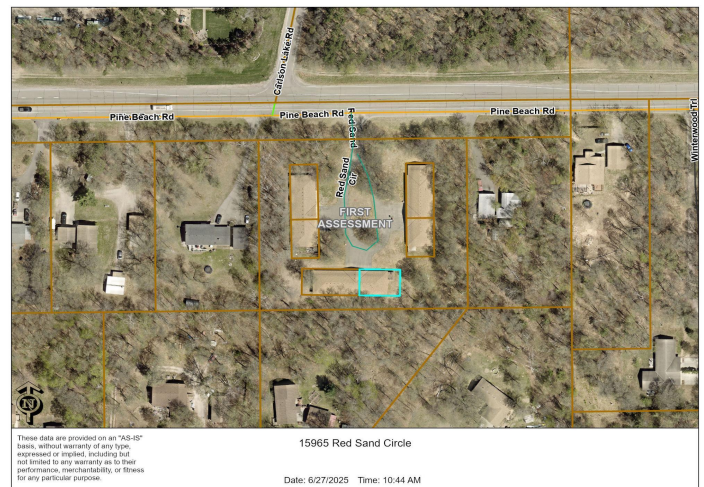


website: [www.AffinityRealEstate.com](http://www.AffinityRealEstate.com) | email: [info@affinityrealestate.com](mailto:info@affinityrealestate.com) | office: 218-237-3333 | fax: 218-237-3377

**Affinity**  
REAL ESTATE INC

**\$209,900**  
MLS 6745051 Residential  
15965 Red Sand Circle  
Brainerd MN 56401





website: [www.AffinityRealEstate.com](http://www.AffinityRealEstate.com) | email: [info@affinityrealestate.com](mailto:info@affinityrealestate.com) | office: 218-237-3333 | fax: 218-237-3377



**\$209,900**  
 MLS 6745051 Residential  
 15965 Red Sand Circle  
 Brainerd MN 56401