



MLS 6745175 Lake Home

\$2,500,000

4,529 sq ft
3 bedrooms
4 baths

8766 Interlachen Road
Nisswa MN 56468

Waterfront: Gull

Status: Active

Description:

Breathtaking Gull Lake Views – 150' of Sandy Shoreline! Experience the ultimate in lake living with this remarkable 4,500 sq. ft. custom-crafted home, featuring premium materials, custom-milled hardwoods, high-end appliances, and meticulous attention to detail. Perfectly positioned at the water's edge, this residence blends luxury, comfort, and functionality in perfect harmony. Set on a beautifully landscaped, park-like 1.3-acre lot with mature trees, the property offers peaceful privacy and seamless outdoor living. Relax or entertain on expansive patios, or retreat indoors to enjoy a fully equipped theater room and a spacious bonus room—ideal for gatherings, game nights, or active family living. The heated, insulated garages offer ample space for vehicles and lake toys, with convenient hot and cold water hookups for added functionality. Whether you're boating on the water, grilling on the patio, dining out nearby, or hosting guests, this home offers a central location and a rare opportunity to enjoy the quiet beauty of nature along one of Minnesota's most desirable shorelines.

Additional Details:

Year Built	2022
Lot Acres	1.33
Lot Dimensions	150x410x150x380
Garage Stalls	5
School District	181
Taxes	\$13,768
Taxes with Assessments	\$13,834
Tax Year	2025

Additional Features:

Basement: Block, Daylight/Lookout Windows, Drain Tiled, Egress Window(s), Finished, Full, Concrete, Tile Shower, Walkout **Fuel:** Natural Gas
Garage: 5 **Heat:** Forced Air, Radiator(s) **Sewer:** Private Sewer, Tank with Drainage Field **Water:** Drilled, Private, Well **Air Conditioning:** Central Air

Driving Directions:

Highway #371 North, To Left On County Road #77, Go 4.6 Miles To Property On The Left.



Listed By:
Edina Realty, Inc.

Affinity Real Estate Inc. participates in the Regional Multiple Listing Service of Minnesota, Inc Broker Reciprocity (sm) program, allowing us to display other broker's listings on our website. All properties are subject to prior sale, change or withdrawal.



Call Affinity Real Estate

218-237-3333

info@affinityrealestate.com



Affinity Real Estate - 600 Park Avenue South - Park Rapids MN 56470



website: www.AffinityRealEstate.com | email: info@affinityrealestate.com | office: 218-237-3333 | fax: 218-237-3377

Affinity
REAL ESTATE INC

\$2,500,000

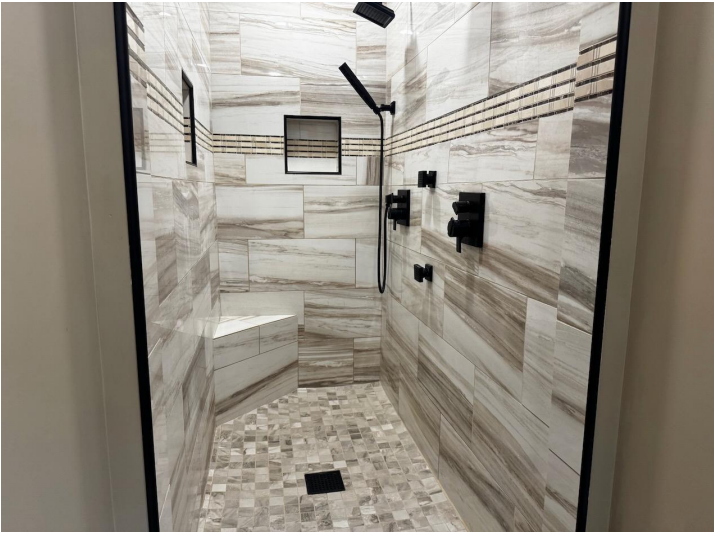
MLS 6745175 Lake Home
8766 Interlachen Road
Nisswa MN 56468



website: www.AffinityRealEstate.com | email: info@affinityrealestate.com | office: 218-237-3333 | fax: 218-237-3377



\$2,500,000
 MLS 6745175 Lake Home
 8766 Interlachen Road
 Nisswa MN 56468

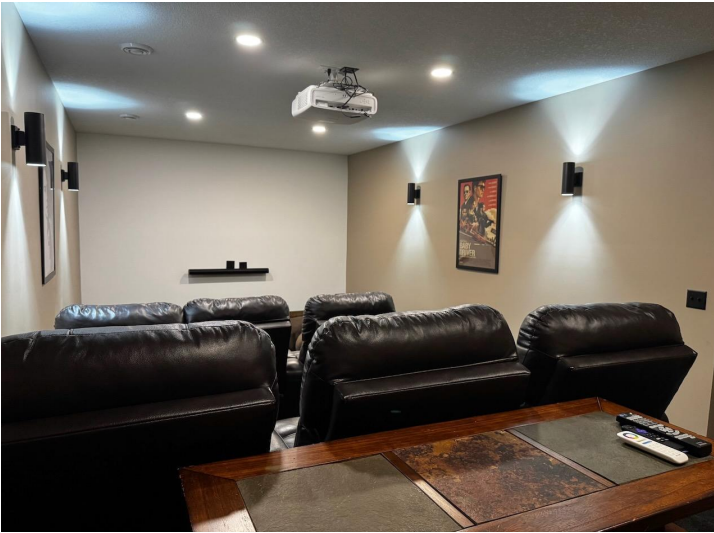


website: www.AffinityRealEstate.com | email: info@affinityrealestate.com | office: 218-237-3333 | fax: 218-237-3377



\$2,500,000

MLS 6745175 Lake Home
8766 Interlachen Road
Nisswa MN 56468



website: www.AffinityRealEstate.com | email: info@affinityrealestate.com | office: 218-237-3333 | fax: 218-237-3377

Affinity
REAL ESTATE INC

\$2,500,000
MLS 6745175 Lake Home
8766 Interlachen Road
Nisswa MN 56468



website: www.AffinityRealEstate.com | email: info@affinityrealestate.com | office: 218-237-3333 | fax: 218-237-3377



\$2,500,000
MLS 6745175 Lake Home
8766 Interlachen Road
Nisswa MN 56468

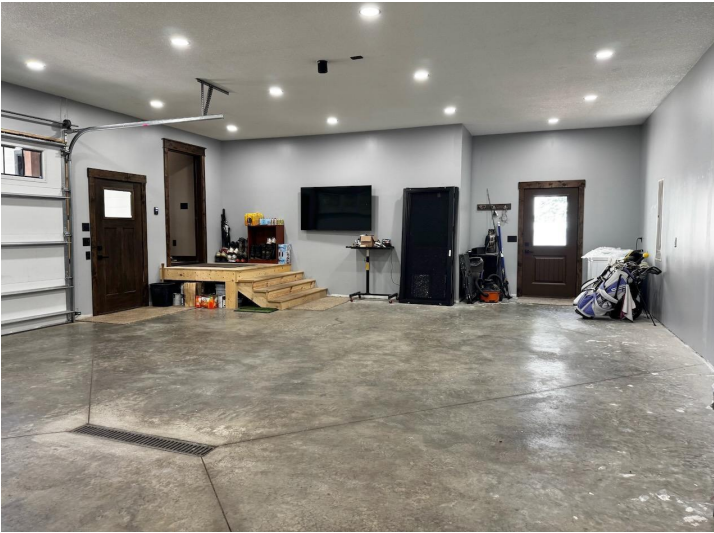


website: www.AffinityRealEstate.com | email: info@affinityrealestate.com | office: 218-237-3333 | fax: 218-237-3377

Affinity
REAL ESTATE INC

\$2,500,000

MLS 6745175 Lake Home
8766 Interlachen Road
Nisswa MN 56468



website: www.AffinityRealEstate.com | email: info@affinityrealestate.com | office: 218-237-3333 | fax: 218-237-3377



\$2,500,000

MLS 6745175 Lake Home
8766 Interlachen Road
Nisswa MN 56468