



MLS 6745245 Lake Home

\$399,000

2,223 sq ft
4 bedrooms
2 baths

17676 County Road 11
Crosby MN 56441

Waterfront: Pine River

Status: Active

Description:

Welcome to your private paradise on the scenic Pine River! This beautifully maintained 4-bedroom, 2-bath home sits on 4.89 acres of park-like grounds with 140 feet of serene shoreline—perfect for nature lovers, outdoor enthusiasts, or anyone seeking peace and privacy. Inside, you'll find thoughtful updates throughout, including brand new Anderson windows that fill the home with natural light, a stylishly updated bathroom, new luxury vinyl tile (LVT) flooring, plush new carpet, and fresh countertops that bring modern flair to a timeless layout. Stay comfortable year-round with newer heating and central air systems. Step outside to a gorgeous, newly built composite deck that overlooks the exceptionally landscaped yard—ideal for relaxing or entertaining while taking in the wildlife-rich surroundings. The property includes a spacious 2-stall attached and insulated garage, a massive 3-stall detached garage, and a convenient storage shed—offering ample space for vehicles, hobbies, and storage. This rare find offers the perfect blend of comfort, space, and natural beauty. Conveniently located between Crosby (Approximately 10 Minutes) and Crosslake (Approximately 15 Minutes) away. Whether you're looking for a forever home or a weekend escape, this riverfront gem is a must-see!

Additional Details:

Year Built	1993
Lot Acres	4.89
Lot Dimensions	146x887x290x328x503
Garage Stalls	5
School District	182
Taxes	\$144
Taxes with Assessments	\$144
Tax Year	2024

Additional Features:

Basement: Block, Drain Tiled, Finished, Sump Pump **Fuel:** Propane **Garage:** 5 **Heat:** Forced Air **Sewer:** Septic System Compliant - Yes, Tank with Drainage Field **Water:** Well **Air Conditioning:** Central Air

Driving Directions:

From 210/6 Intersection in Crosby go North to Left on County Road 11 5 Miles to Home on Right.



Listed By:
Coldwell Banker Crown Realtors

Affinity Real Estate Inc. participates in the Regional Multiple Listing Service of Minnesota, Inc Broker Reciprocity (sm) program, allowing us to display other broker's listings on our website. All properties are subject to prior sale, change or withdrawal.



Call Affinity Real Estate

218-237-3333

info@affinityrealestate.com



Affinity Real Estate - 600 Park Avenue South - Park Rapids MN 56470



website: www.AffinityRealEstate.com | email: info@affinityrealestate.com | office: 218-237-3333 | fax: 218-237-3377

Affinity
REAL ESTATE INC

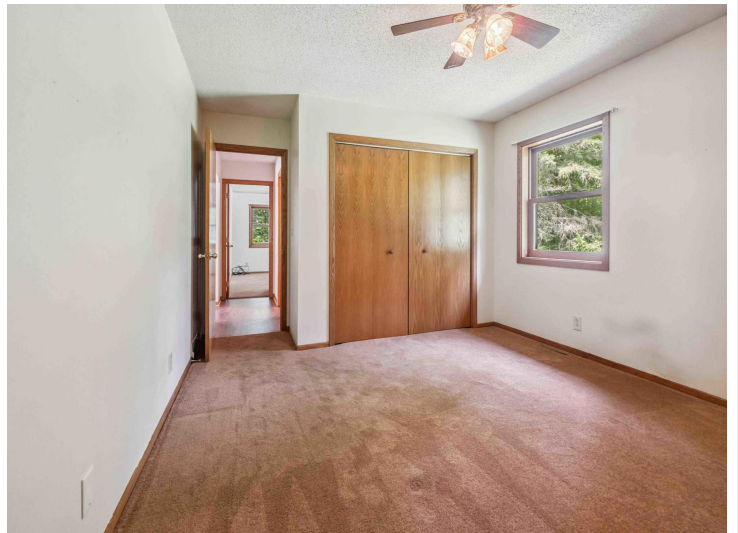
\$399,000
MLS 6745245 Lake Home
17676 County Road 11
Crosby MN 56441



website: www.AffinityRealEstate.com | email: info@affinityrealestate.com | office: 218-237-3333 | fax: 218-237-3377

Affinity
REAL ESTATE INC

\$399,000
MLS 6745245 Lake Home
17676 County Road 11
Crosby MN 56441



website: www.AffinityRealEstate.com | email: info@affinityrealestate.com | office: 218-237-3333 | fax: 218-237-3377



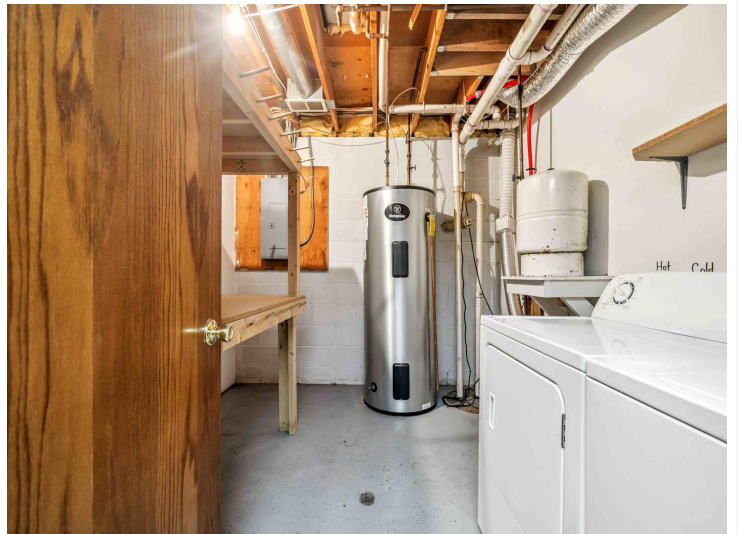
\$399,000
MLS 6745245 Lake Home
17676 County Road 11
Crosby MN 56441



website: www.AffinityRealEstate.com | email: info@affinityrealestate.com | office: 218-237-3333 | fax: 218-237-3377



\$399,000
 MLS 6745245 Lake Home
 17676 County Road 11
 Crosby MN 56441



website: www.AffinityRealEstate.com | email: info@affinityrealestate.com | office: 218-237-3333 | fax: 218-237-3377



\$399,000
 MLS 6745245 Lake Home
 17676 County Road 11
 Crosby MN 56441



website: www.AffinityRealEstate.com | email: info@affinityrealestate.com | office: 218-237-3333 | fax: 218-237-3377



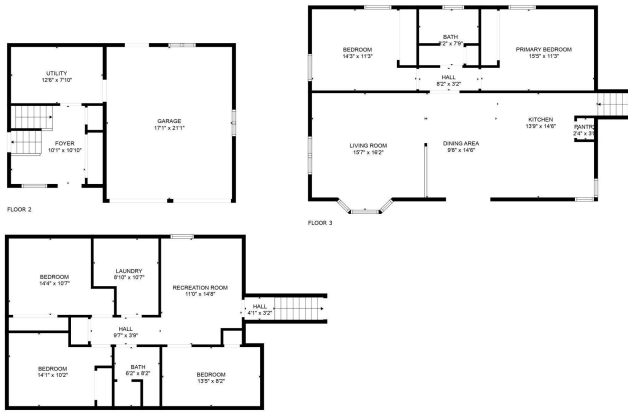
\$399,000
 MLS 6745245 Lake Home
 17676 County Road 11
 Crosby MN 56441



website: www.AffinityRealEstate.com | email: info@affinityrealestate.com | office: 218-237-3333 | fax: 218-237-3377



\$399,000
 MLS 6745245 Lake Home
 17676 County Road 11
 Crosby MN 56441



ESTIMATED AREAS
 GLA FLOOR 1: 863 sq. ft. EXCLUDED AREAS 0 sq. ft.
 GLA FLOOR 2: 270 sq. ft. EXCLUDED AREAS 390 sq. ft.
 GLA FLOOR 3: 1,099 sq. ft. EXCLUDED AREAS 0 sq. ft.
 TOTAL GLA 2,232 sq. ft. TOTAL AREA 2,622 sq. ft.

FLOOR PLAN CREATED BY CLOUDJACK, LLC. DIMENSIONS SHOWN ARE APPROXIMATE AND NOT GUARANTEED.

website: www.AffinityRealEstate.com | email: info@affinityrealestate.com | office: 218-237-3333 | fax: 218-237-3377



\$399,000

MLS 6745245 Lake Home
 17676 County Road 11
 Crosby MN 56441