



MLS 6745534 Lake Home

**\$1,250,000**

1,514 sq ft  
3 bedrooms  
2 baths

15573 State 64  
Akeley MN 56433

Waterfront: Kettle

Status: Pending

#### Description:

Nestled within 241 acres of pristine, secluded land, this rare property presents an unparalleled opportunity to own your own private, spring-fed Kettle Lake. With depths reaching 32 feet, the lake offers a world-class fishing experience, home to trophy-sized Northern Pike—one caught at an impressive 49.5 inches—and a storied history of record-holding Pumpkinseed. This remarkable estate features nearly a mile of untouched shoreline, over 100 acres of fertile, tillable land, and a meticulously maintained pine tree plantation. The property also boasts an abundance of fruit trees, superb hunting grounds, and an oasis of privacy, ideal for those seeking tranquility amidst nature's beauty. The residence is a charming 1,500 square-foot home, thoughtfully updated with a gourmet kitchen, perfect for both culinary enthusiasts and casual entertaining. The home also includes a spacious primary suite, a full basement, and modern conveniences such as high-speed internet. A four-car garage ensures ample space for both storage and recreational equipment. In addition to its natural beauty and refined residence, the property offers 40+ acres of harvestable Norway Pines, further enhancing its appeal. This is truly a once-in-a-lifetime opportunity to acquire a legacy property that combines unrivaled natural beauty, sporting allure, and luxurious living.

#### Additional Details:

Year Built	1920
Lot Acres	241.06
Lot Dimensions	Irregular
Garage Stalls	4
School District	113
Taxes	\$2,086
Taxes with Assessments	\$2,086
Tax Year	2024

#### Additional Features:

**Basement:** Block, Concrete **Fuel:** Electric, Propane **Garage:** 4 **Heat:** Forced Air, Heat Pump, Outdoor Furnace **Sewer:** Private Sewer, Tank with Drainage Field **Water:** Drilled, Well **Air Conditioning:** Central Air

#### Driving Directions:

From Akeley, south on Hwy 64 for approx. 8 miles towards 220th Street.



Listed By:  
Northland Sotheby's International Realty

Affinity Real Estate Inc. participates in the Regional Multiple Listing Service of Minnesota, Inc Broker Reciprocity (sm) program, allowing us to display other broker's listings on our website. All properties are subject to prior sale, change or withdrawal.



Call Affinity Real Estate

**218-237-3333**

[info@affinityrealestate.com](mailto:info@affinityrealestate.com)



Affinity Real Estate - 600 Park Avenue South - Park Rapids MN 56470





website: [www.AffinityRealEstate.com](http://www.AffinityRealEstate.com) | email: [info@affinityrealestate.com](mailto:info@affinityrealestate.com) | office: 218-237-3333 | fax: 218-237-3377



**\$1,250,000**

MLS 6745534 Lake Home

15573 State 64

Akeley MN 56433





website: [www.AffinityRealEstate.com](http://www.AffinityRealEstate.com) | email: [info@affinityrealestate.com](mailto:info@affinityrealestate.com) | office: 218-237-3333 | fax: 218-237-3377

**Affinity**  
REAL ESTATE INC

**\$1,250,000**  
MLS 6745534 Lake Home  
15573 State 64  
Akeley MN 56433



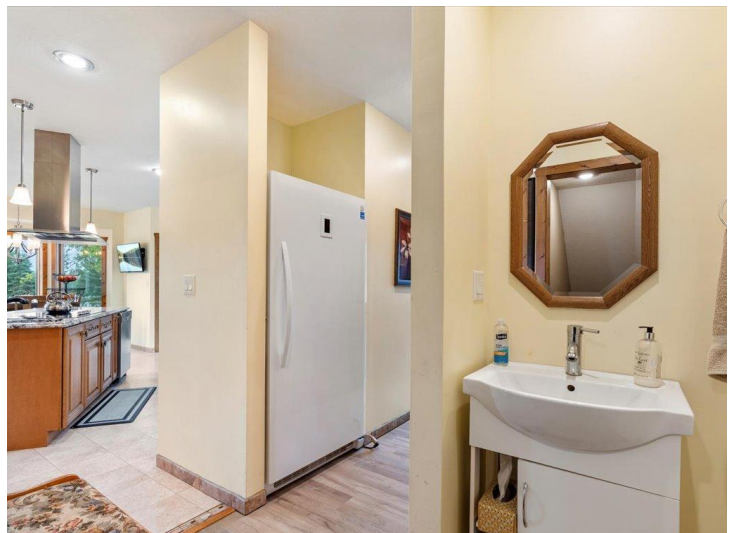


website: [www.AffinityRealEstate.com](http://www.AffinityRealEstate.com) | email: [info@affinityrealestate.com](mailto:info@affinityrealestate.com) | office: 218-237-3333 | fax: 218-237-3377

**Affinity**  
REAL ESTATE INC

**\$1,250,000**  
MLS 6745534 Lake Home  
15573 State 64  
Akeley MN 56433





website: [www.AffinityRealEstate.com](http://www.AffinityRealEstate.com) | email: [info@affinityrealestate.com](mailto:info@affinityrealestate.com) | office: 218-237-3333 | fax: 218-237-3377

**Affinity**  
REAL ESTATE INC

**\$1,250,000**  
MLS 6745534 Lake Home  
15573 State 64  
Akeley MN 56433





website: [www.AffinityRealEstate.com](http://www.AffinityRealEstate.com) | email: [info@affinityrealestate.com](mailto:info@affinityrealestate.com) | office: 218-237-3333 | fax: 218-237-3377

**Affinity**  
REAL ESTATE INC

**\$1,250,000**  
MLS 6745534 Lake Home  
15573 State 64  
Akeley MN 56433





website: [www.AffinityRealEstate.com](http://www.AffinityRealEstate.com) | email: [info@affinityrealestate.com](mailto:info@affinityrealestate.com) | office: 218-237-3333 | fax: 218-237-3377



**\$1,250,000**  
 MLS 6745534 Lake Home  
 15573 State 64  
 Akeley MN 56433





website: [www.AffinityRealEstate.com](http://www.AffinityRealEstate.com) | email: [info@affinityrealestate.com](mailto:info@affinityrealestate.com) | office: 218-237-3333 | fax: 218-237-3377



**\$1,250,000**  
 MLS 6745534 Lake Home  
 15573 State 64  
 Akeley MN 56433





website: [www.AffinityRealEstate.com](http://www.AffinityRealEstate.com) | email: [info@affinityrealestate.com](mailto:info@affinityrealestate.com) | office: 218-237-3333 | fax: 218-237-3377



**\$1,250,000**  
 MLS 6745534 Lake Home  
 15573 State 64  
 Akeley MN 56433





website: [www.AffinityRealEstate.com](http://www.AffinityRealEstate.com) | email: [info@affinityrealestate.com](mailto:info@affinityrealestate.com) | office: 218-237-3333 | fax: 218-237-3377



**\$1,250,000**  
MLS 6745534 Lake Home  
15573 State 64  
Akeley MN 56433