



MLS 6745589 Lake Home

\$599,900

1,467 sq ft
2 bedrooms
3 baths

11100 Fisher Lane
Park Rapids MN 56470

Waterfront: Portage

Status: Active

Description:

Don't miss out. Take a look at this amazing high end remodel on Portage Lake. The upper level has been totally re-done inside and out, including but not limited to smart siding, new windows, new hickory kitchen alder doors and trim, new flooring, and much more. Lower level has a craft room and 1/2 bath and your chance to finish the balance as you wish. Enjoy the wrap-around lakeside deck, the screened porch, circle drive, and arguably the best lake view on Portage Lake. Add to this a 36x40 detached framed building with a 10x26 insulated shop and you get the complete package. The lot is picturesque with gradual elevation, 275 feet of shoreline and awesome views of Portage Lake. Dock is included in the sale. Don't wait on this one. Schedule a showing today!

Seller would be willing to contract with new buyer to finish basement for additional cost.

Additional Details:

Year Built	1959
Lot Acres	1.93
Lot Dimensions	275x318x163x403
Garage Stalls	5
School District	309
Taxes	\$2,418
Taxes with Assessments	\$2,418
Tax Year	2025

Additional Features:

Fuel: Electric, Propane **Heat:** Forced Air, Fireplace(s), Heat Pump

Driving Directions:

From 34/71 North on 71 3 miles to a left on County 48. Go 3 miles to a right on 210th Street then turn left on Finch Drive. Follow Finch Drive to Fisher Lane, take a slight jog left on Fisher Lane to property.



Listed By:
Wolff & Simon Real Estate

Affinity Real Estate Inc. participates in the Regional Multiple Listing Service of Minnesota, Inc Broker Reciprocity (sm) program, allowing us to display other broker's listings on our website. All properties are subject to prior sale, change or withdrawal.



Call Affinity Real Estate

218-237-3333

info@affinityrealestate.com



Affinity Real Estate - 600 Park Avenue South - Park Rapids MN 56470



website: www.AffinityRealEstate.com | email: info@affinityrealestate.com | office: 218-237-3333 | fax: 218-237-3377



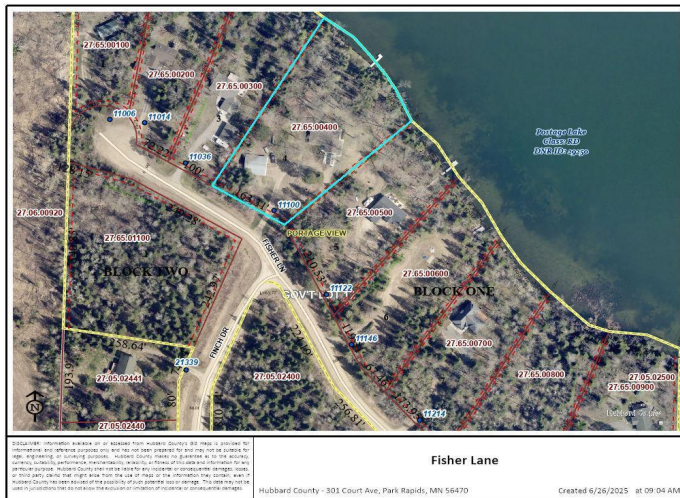
\$599,900
MLS 6745589 Lake Home
11100 Fisher Lane
Park Rapids MN 56470



website: www.AffinityRealEstate.com | email: info@affinityrealestate.com | office: 218-237-3333 | fax: 218-237-3377

Affinity
REAL ESTATE INC

\$599,900
MLS 6745589 Lake Home
11100 Fisher Lane
Park Rapids MN 56470



website: www.AffinityRealEstate.com | email: info@affinityrealestate.com | office: 218-237-3333 | fax: 218-237-3377

Affinity
REAL ESTATE INC

\$599,900
MLS 6745589 Lake Home
11100 Fisher Lane
Park Rapids MN 56470

website: www.AffinityRealEstate.com | email: info@affinityrealestate.com | office: 218-237-3333 | fax:218-237-3377



\$599,900

MLS 6745589 Lake Home
11100 Fisher Lane
Park Rapids MN 56470

website: www.AffinityRealEstate.com | email: info@affinityrealestate.com | office: 218-237-3333 | fax:218-237-3377



\$599,900

MLS 6745589 Lake Home
11100 Fisher Lane
Park Rapids MN 56470

website: www.AffinityRealEstate.com | email: info@affinityrealestate.com | office: 218-237-3333 | fax:218-237-3377



\$599,900

MLS 6745589 Lake Home
11100 Fisher Lane
Park Rapids MN 56470

website: www.AffinityRealEstate.com | email: info@affinityrealestate.com | office: 218-237-3333 | fax:218-237-3377



\$599,900

MLS 6745589 Lake Home
11100 Fisher Lane
Park Rapids MN 56470

website: www.AffinityRealEstate.com | email: info@affinityrealestate.com | office: 218-237-3333 | fax:218-237-3377



\$599,900

MLS 6745589 Lake Home
11100 Fisher Lane
Park Rapids MN 56470

website: www.AffinityRealEstate.com | email: info@affinityrealestate.com | office: 218-237-3333 | fax:218-237-3377



\$599,900

MLS 6745589 Lake Home
11100 Fisher Lane
Park Rapids MN 56470

website: www.AffinityRealEstate.com | email: info@affinityrealestate.com | office: 218-237-3333 | fax:218-237-3377



\$599,900

MLS 6745589 Lake Home
11100 Fisher Lane
Park Rapids MN 56470