



MLS 6745749 Land

\$499,000

80 Acres
Raw Land

TBD Basswood
Cushing MN 56443

Status: Canceled

Description:

Two-hour drive from Twin Cities you could be at your outdoor sanctuary. Located 2 miles off Hwy 10 from Cushing onto County Road 11 west.

This 80 acre property offers the perfect blend for any outdoor activities, trails throughout the property, high land, low land, field for your food plots, heavily wooded, with river access on north side. Plenty of space to enjoy your time outdoors endless possibilities. Additional 40 acres is available. Contact agent for more information.

Additional Details:

Lot Acres	80
Lot Dimensions	Irregular
School District	482
Taxes	\$656
Taxes with Assessments	\$752
Tax Year	2025

Additional Features:

Driving Directions:

94 W to Co Hwy 2 (Co Rd 2) in Stearns County, Exit 160 -Twin Lake Rd Us 10 W to Basswood.



Listed By:
Coldwell Banker Realty

Affinity Real Estate Inc. participates in the Regional Multiple Listing Service of Minnesota, Inc Broker Reciprocity (sm) program, allowing us to display other broker's listings on our website. All properties are subject to prior sale, change or withdrawal.



Call Affinity Real Estate

218-237-3333

info@affinityrealestate.com



Affinity Real Estate - 600 Park Avenue South - Park Rapids MN 56470



website: www.AffinityRealEstate.com | email: info@affinityrealestate.com | office: 218-237-3333 | fax: 218-237-3377



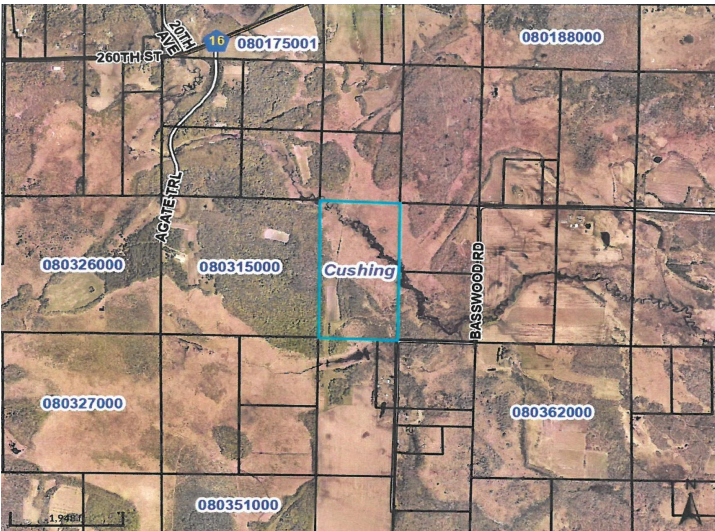
\$499,000
MLS 6745749 Land
TBD Basswood
Cushing MN 56443



website: www.AffinityRealEstate.com | email: info@affinityrealestate.com | office: 218-237-3333 | fax: 218-237-3377



\$499,000
MLS 6745749 Land
TBD Basswood
Cushing MN 56443



website: www.AffinityRealEstate.com | email: info@affinityrealestate.com | office: 218-237-3333 | fax: 218-237-3377



\$499,000
MLS 6745749 Land
TBD Basswood
Cushing MN 56443