



MLS 6745778 Land

\$99,900

0 Square Feet
Rough Grade

1341 County 7
Longville MN 56655

Status: Hold

Description:

Possibility of purchasing just half the lot with camper. \$45K Great opportunity to own a large wooded lot with large garage just a few blocks from downtown Longville. (its really two parcels with one PID) So many opportunities. City sewer hookup. Currently used with 30ft camper and garage. Great cabin alternative! Bonus, lot can be divided with a survey & can be commercial. Let the ideas flow. Boat launch for Girl Lake is a short distance. Access at least 10 major lakes within a 10 mile distance! Come enjoy beautiful Longville and the Woman Lake chain!

Additional Details:

Lot Dimensions	200x139x110.17x128
School District	118
Taxes	\$328
Taxes with Assessments	\$328
Tax Year	2025

Additional Features:

Driving Directions:

Near intersection of County 7 & Highway 84



Listed By:
Shortlist Properties LLC

Affinity Real Estate Inc. participates in the Regional Multiple Listing Service of Minnesota, Inc Broker Reciprocity (sm) program, allowing us to display other broker's listings on our website. All properties are subject to prior sale, change or withdrawal.



Call Affinity Real Estate

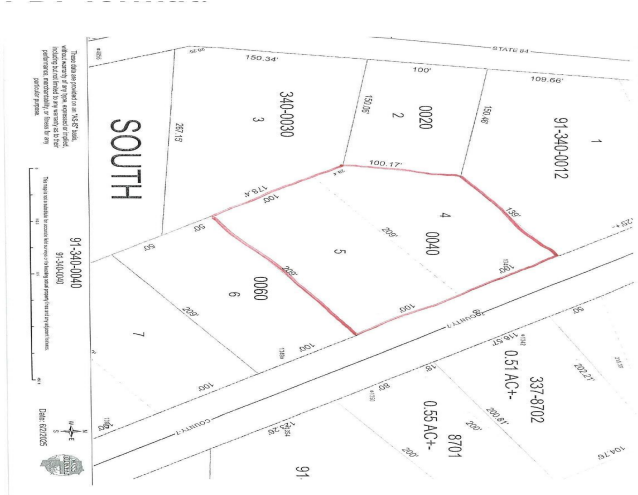
218-237-3333

info@affinityrealestate.com

MLS



Affinity Real Estate - 600 Park Avenue South - Park Rapids MN 56470



website: www.AffinityRealEstate.com | email: info@affinityrealestate.com | office: 218-237-3333 | fax: 218-237-3377

Affinity
REAL ESTATE INC

\$99,900
MLS 6745778 Land
1341 County 7
Longville MN 56655



website: www.AffinityRealEstate.com | email: info@affinityrealestate.com | office: 218-237-3333 | fax: 218-237-3377

Affinity
REAL ESTATE INC

\$99,900
MLS 6745778 Land
1341 County 7
Longville MN 56655



website: www.AffinityRealEstate.com | email: info@affinityrealestate.com | office: 218-237-3333 | fax: 218-237-3377



\$99,900
MLS 6745778 Land
1341 County 7
Longville MN 56655