



MLS 6745784 Residential

\$319,900

2,600 sq ft
4 bedrooms
2 baths

26566 330th Street
Shevlin MN 56676

Status: Active

Description:

Custom built "Montana Lodgepole Pine" log home! 4 bdrm-1 3/4 bath home with 5 acres south of Shevlin in a cozy county setting. Besides the robust curbside appeal, the inside of the home is even more impressive! Vaulted ceiling in the LR/DR area with lots of windows for natural light and walks onto a covered deck. The open LR-DR-Kit area further exemplifies the open-air feeling of this home. The primary suite is located on the upper level, which offers great views of the property! The walkout basement is finished with a large family room, 2 bedrooms, laundry, utility, and lots of storage! Coming into the home, you are greeted with a large mud room/hot-tub room with numerous windows. The outbuildings include a 24' x 40' garage, a 20' x 42' garage/workshop (garage is 20' x 24' and workshop is 18' x 20' and both are insulated/heated), a custom-built playhouse with its own deck, and a log cabin-style doghouse! The home has been freshly chinked and stained. Also includes an efficient heat pump for heating/cooling.

Additional Details:

Year Built	1991
Lot Acres	5
Lot Dimensions	3360x660
Garage Stalls	3
School District	162
Taxes	\$1,532
Taxes with Assessments	\$1,532
Tax Year	2025

Additional Features:

Basement: Block, Daylight/Lookout Windows, Finished, Full, Walkout **Fuel:** Electric, Propane **Garage:** 3 **Heat:** Forced Air, Heat Pump
Sewer: Private Sewer **Water:** Submersible - 4 Inch, Drilled, Well **Air Conditioning:** Central Air, Heat Pump

Driving Directions:

From Shevlin, south of County Road #2 for 3 1/2 miles, left (east) on 330th St for 3/4 miles, home on the left (north).



Listed By:
Realty Experts, LLC

Affinity Real Estate Inc. participates in the Regional Multiple Listing Service of Minnesota, Inc Broker Reciprocity (sm) program, allowing us to display other broker's listings on our website. All properties are subject to prior sale, change or withdrawal.



Call Affinity Real Estate

218-237-3333

info@affinityrealestate.com



Affinity Real Estate - 600 Park Avenue South - Park Rapids MN 56470



website: www.AffinityRealEstate.com | email: info@affinityrealestate.com | office: 218-237-3333 | fax: 218-237-3377

Affinity
REAL ESTATE INC

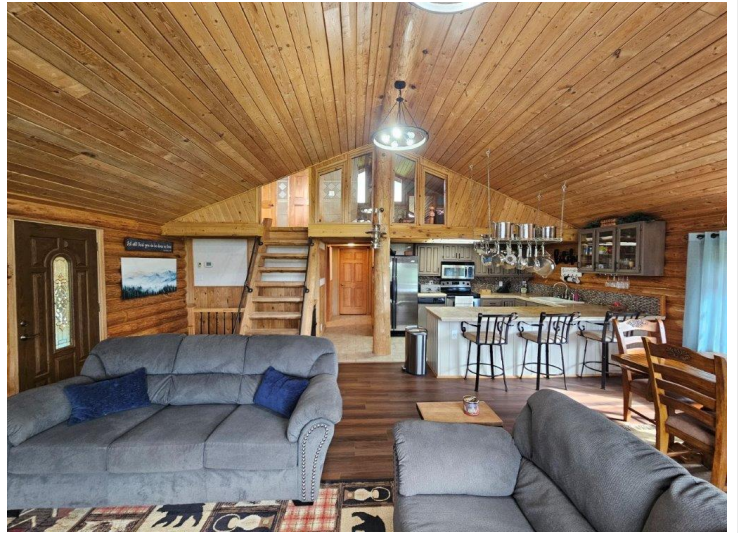
\$319,900
MLS 6745784 Residential
26566 330th Street
Shevlin MN 56676



website: www.AffinityRealEstate.com | email: info@affinityrealestate.com | office: 218-237-3333 | fax: 218-237-3377



\$319,900
 MLS 6745784 Residential
 26566 330th Street
 Shevlin MN 56676



website: www.AffinityRealEstate.com | email: info@affinityrealestate.com | office: 218-237-3333 | fax: 218-237-3377

Affinity
REAL ESTATE INC

\$319,900
MLS 6745784 Residential
26566 330th Street
Shevlin MN 56676



website: www.AffinityRealEstate.com | email: info@affinityrealestate.com | office: 218-237-3333 | fax: 218-237-3377

Affinity
REAL ESTATE INC

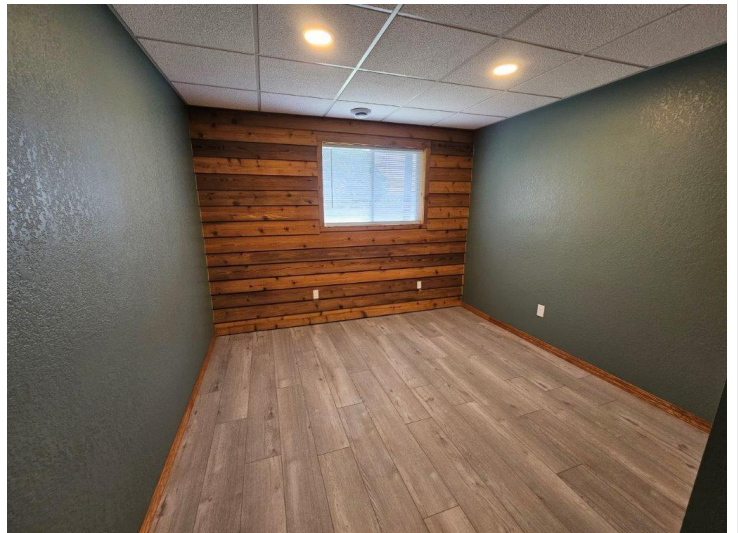
\$319,900
MLS 6745784 Residential
26566 330th Street
Shevlin MN 56676



website: www.AffinityRealEstate.com | email: info@affinityrealestate.com | office: 218-237-3333 | fax: 218-237-3377

Affinity
REAL ESTATE INC

\$319,900
MLS 6745784 Residential
26566 330th Street
Shevlin MN 56676



website: www.AffinityRealEstate.com | email: info@affinityrealestate.com | office: 218-237-3333 | fax: 218-237-3377

Affinity
REAL ESTATE INC

\$319,900
MLS 6745784 Residential
26566 330th Street
Shevlin MN 56676



website: www.AffinityRealEstate.com | email: info@affinityrealestate.com | office: 218-237-3333 | fax: 218-237-3377

Affinity
REAL ESTATE INC

\$319,900
MLS 6745784 Residential
26566 330th Street
Shevlin MN 56676



website: www.AffinityRealEstate.com | email: info@affinityrealestate.com | office: 218-237-3333 | fax: 218-237-3377

Affinity
REAL ESTATE INC

\$319,900
MLS 6745784 Residential
26566 330th Street
Shevlin MN 56676



website: www.AffinityRealEstate.com | email: info@affinityrealestate.com | office: 218-237-3333 | fax: 218-237-3377



\$319,900
MLS 6745784 Residential
26566 330th Street
Shevlin MN 56676