



MLS 6745890 Lake Home

**\$189,900**

1,338 sq ft  
2 bedrooms  
1 baths

320 Quadna Mountain Road  
Hill City MN 55748

Waterfront: Unnamed Lake

Status: Active

#### Description:

This beautifully updated 2-bedroom, 1-bath Quadna Mountain townhouse offers a stylish and low-maintenance lifestyle with golf course views and shared lake access. Inside, you'll find a completely remodeled interior with a reconfigured layout that maximizes space and functionality. The main level features an open kitchen with Cambria countertops and stainless steel appliances, a vaulted living room with a stone gas fireplace, and sliding glass doors to your private deck. Two main-floor bedrooms and a spacious 3/4 bath with custom touches provide comfortable living, while the loft adds flexible space for guests, office, or hobby use. The unit includes a designated parking space with power. HOA covers water, snow removal, lawn care, garbage, shared wells, and access to the pool, tennis/pickleball courts, and a dock on Hill Lake. Located just across from Quadna Hills Golf Course—this is a turnkey, year-round home or getaway.

#### Additional Details:

Year Built	1973
Lot Acres	0.03
Lot Dimensions	-
School District	2
Taxes	\$750
Taxes with Assessments	\$750
Tax Year	2025

#### Additional Features:

**Basement:** Crawl Space **Fuel:** Electric, Propane, Wood **Heat:** Baseboard, Fireplace(s), Radiant **Sewer:** City Sewer/Connected **Water:** Private, Well **Air Conditioning:** Wall Unit(s)

#### Driving Directions:

From Grand Rapids: US-169S, Turn left onto Quadna Rd, Turn left onto Eagle Ln.



Listed By:  
GRAND PROPERTIES REAL ESTATE

Affinity Real Estate Inc. participates in the Regional Multiple Listing Service of Minnesota, Inc Broker Reciprocity (sm) program, allowing us to display other broker's listings on our website. All properties are subject to prior sale, change or withdrawal.



Call Affinity Real Estate

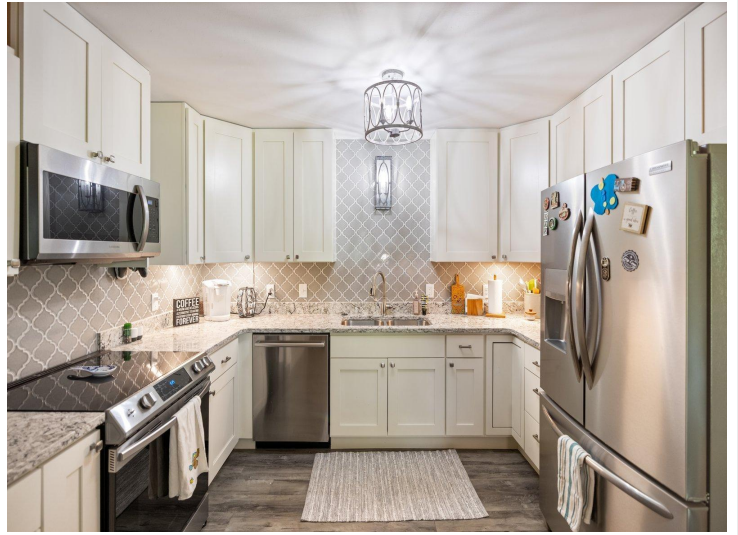
**218-237-3333**

[info@affinityrealestate.com](mailto:info@affinityrealestate.com)



Affinity Real Estate - 600 Park Avenue South - Park Rapids MN 56470





website: [www.AffinityRealEstate.com](http://www.AffinityRealEstate.com) | email: [info@affinityrealestate.com](mailto:info@affinityrealestate.com) | office: 218-237-3333 | fax: 218-237-3377

**Affinity**  
REAL ESTATE INC

**\$189,900**  
MLS 6745890 Lake Home  
320 Quadna Mountain Road  
Hill City MN 55748





website: [www.AffinityRealEstate.com](http://www.AffinityRealEstate.com) | email: [info@affinityrealestate.com](mailto:info@affinityrealestate.com) | office: 218-237-3333 | fax: 218-237-3377

**Affinity**  
REAL ESTATE INC

**\$189,900**  
MLS 6745890 Lake Home  
320 Quadna Mountain Road  
Hill City MN 55748



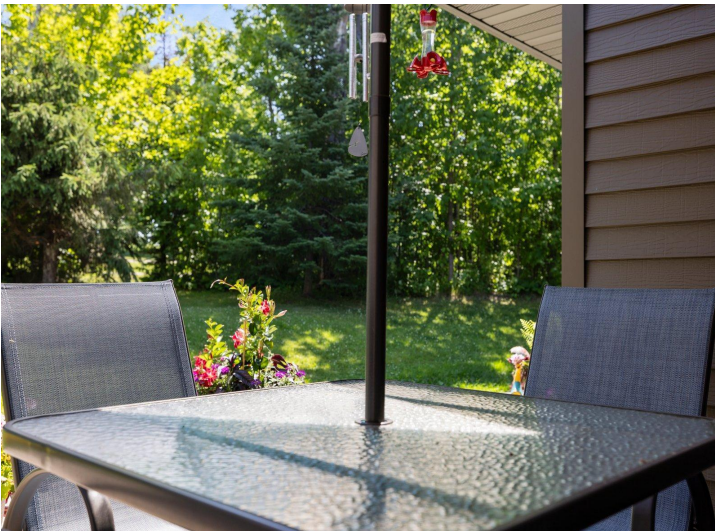
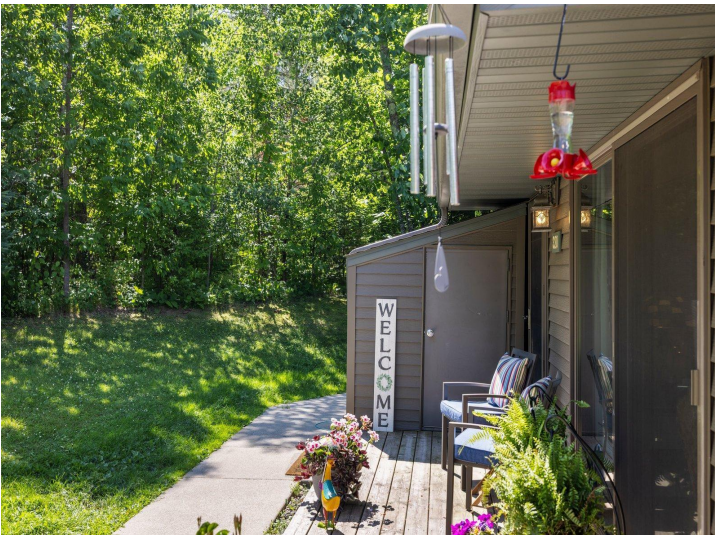


website: [www.AffinityRealEstate.com](http://www.AffinityRealEstate.com) | email: [info@affinityrealestate.com](mailto:info@affinityrealestate.com) | office: 218-237-3333 | fax: 218-237-3377

**Affinity**  
REAL ESTATE INC

**\$189,900**  
MLS 6745890 Lake Home  
320 Quadna Mountain Road  
Hill City MN 55748



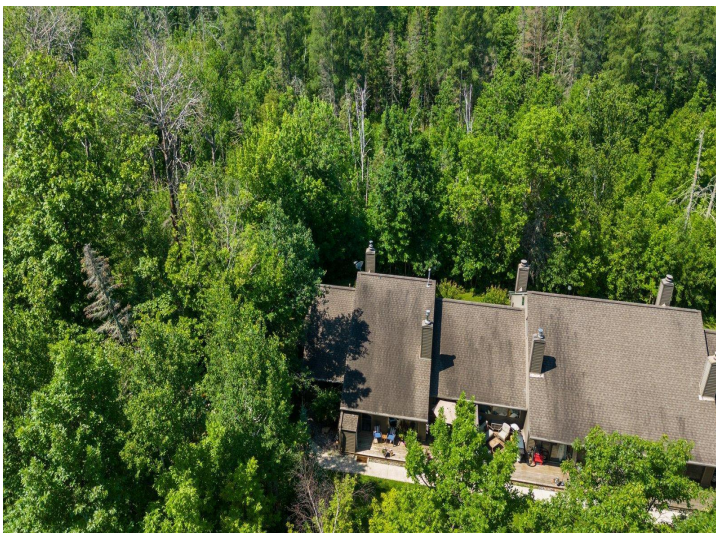


website: [www.AffinityRealEstate.com](http://www.AffinityRealEstate.com) | email: [info@affinityrealestate.com](mailto:info@affinityrealestate.com) | office: 218-237-3333 | fax: 218-237-3377

**Affinity**  
REAL ESTATE INC

**\$189,900**  
MLS 6745890 Lake Home  
320 Quadna Mountain Road  
Hill City MN 55748





website: [www.AffinityRealEstate.com](http://www.AffinityRealEstate.com) | email: [info@affinityrealestate.com](mailto:info@affinityrealestate.com) | office: 218-237-3333 | fax: 218-237-3377



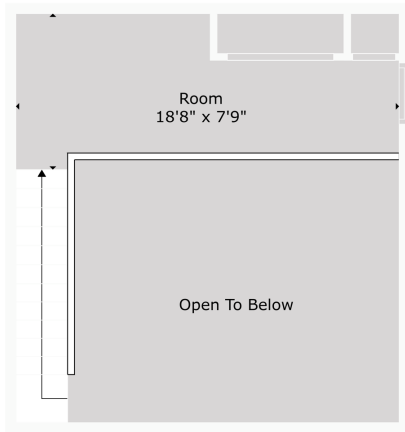
**\$189,900**  
MLS 6745890 Lake Home  
320 Quadna Mountain Road  
Hill City MN 55748





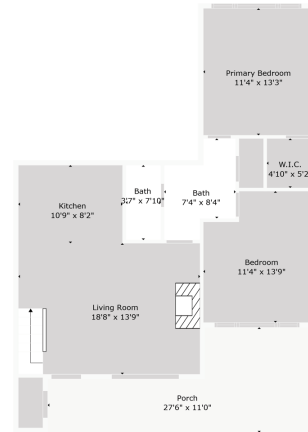
**TOTAL: 974 sq. ft.**  
 FLOOR 1: 802 sq. ft., FLOOR 2: 172 sq. ft.  
 EXCLUDED AREAS: PORCH: 216 sq. ft., OPEN TO BELOW: 207 sq. ft.  
 WALLS: 95 sq. ft.

Floor Plan Created By Cubicore App. Measurements Deemed Highly Reliable But Not Guaranteed.



**TOTAL: 974 sq. ft.**  
 FLOOR 1: 802 sq. ft., FLOOR 2: 172 sq. ft.  
 EXCLUDED AREAS: PORCH: 216 sq. ft., OPEN TO BELOW: 207 sq. ft.  
 WALLS: 95 sq. ft.

Floor Plan Created By Cubicore App. Measurements Deemed Highly Reliable But Not Guaranteed.



**TOTAL: 974 sq. ft.**  
 FLOOR 1: 802 sq. ft., FLOOR 2: 172 sq. ft.  
 EXCLUDED AREAS: PORCH: 216 sq. ft., OPEN TO BELOW: 207 sq. ft.  
 WALLS: 95 sq. ft.

Floor Plan Created By Cubicore App. Measurements Deemed Highly Reliable But Not Guaranteed.

website: [www.AffinityRealEstate.com](http://www.AffinityRealEstate.com) | email: [info@affinityrealestate.com](mailto:info@affinityrealestate.com) | office: 218-237-3333 | fax: 218-237-3377



**\$189,900**  
 MLS 6745890 Lake Home  
 320 Quadna Mountain Road  
 Hill City MN 55748