



MLS 6746280 Land

\$41,000

2.52 Acres

Raw Land

16144 Denver Drive
Park Rapids MN 56470

Status: Pending

Description:

Welcome to The Reserve at Dakota Shores. What a great opportunity to own a building lot close to Park Rapids and Long Lake. This 2.52 acre property offers a great mix of mature trees and a nice opening for a view from your potential building site. Electricity is run into the lot and a camper and small shed are all included with the sale. Call for details today!

Additional Details:

Lot Acres	2.52
Lot Dimensions	75x332x611x572
School District	309
Taxes	\$154
Taxes with Assessments	\$154
Tax Year	2025

Additional Features:

Driving Directions:

From 71/34 in Park Rapids: East on 34 to a right onto County 20/E. Long Lake Road. Follow for 3 miles to a right onto 160th Street, continue to a right on Denver Drive and follow to property on right.



Listed By:
Wolff & Simon Real Estate

Affinity Real Estate Inc. participates in the Regional Multiple Listing Service of Minnesota, Inc Broker Reciprocity (sm) program, allowing us to display other broker's listings on our website. All properties are subject to prior sale, change or withdrawal.



Call Affinity Real Estate

218-237-3333

info@affinityrealestate.com



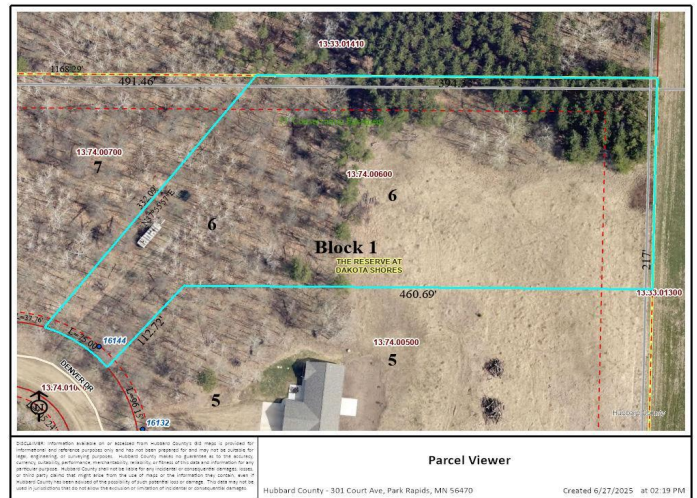
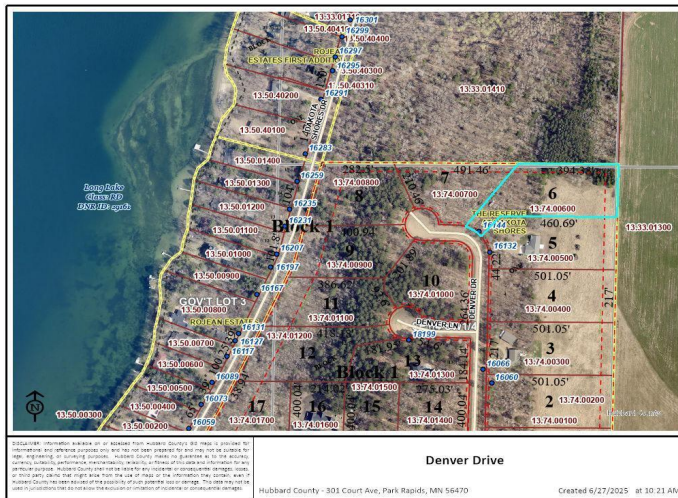
Affinity Real Estate - 600 Park Avenue South - Park Rapids MN 56470



website: www.AffinityRealEstate.com | email: info@affinityrealestate.com | office: 218-237-3333 | fax: 218-237-3377



\$41,000
 MLS 6746280 Land
 16144 Denver Drive
 Park Rapids MN 56470



website: www.AffinityRealEstate.com | email: info@affinityrealestate.com | office: 218-237-3333 | fax: 218-237-3377



\$41,000
MLS 6746280 Land
16144 Denver Drive
Park Rapids MN 56470