



MLS 6746300 Lake Home

**\$1,000,000**

1,584 sq ft  
2 bedrooms  
1 baths

5539 Nashway Road  
Nisswa MN 56468

Waterfront: Round Lake  
(18037300)

Status: Active

#### Description:

A rare opportunity awaits on the pristine, level shores of Round Lake in Nisswa, Minnesota. Unlike most properties on the lake, this 108-foot lot sits near one of Round Lake's few natural drop-offs, offering quick access to deeper water — no long dock required. The sandy shoreline is exceptionally level and perfect for lakeside living, swimming, or launching your boat just steps from your door.

Set on 1.09 acres with breathtaking south-facing views, this lot is part of the storied Gull Lake Chain and offers stunning sunrises and sunsets. The elevation is ideal for a custom-built retreat, or you can choose to remodel the existing mid-century modern cabin already on site. Whether you envision a peaceful getaway or a year-round lake home, this property provides both tranquility and adventure.

With recently improved access via Nashway Road and just minutes from downtown Nisswa's shops and dining, the location couldn't be more convenient. The seller has been verbally informed that a new build could match the neighboring setbacks, offering added design flexibility.

#### Additional Details:

Year Built	1990
Lot Acres	1.09
Lot Dimensions	440x106
Garage Stalls	3
School District	181
Taxes	\$6,806
Taxes with Assessments	\$6,806
Tax Year	2024

#### Additional Features:

**Basement:** Unfinished **Fuel:** Natural Gas, Propane **Garage:** 3 **Heat:** Fireplace(s) **Sewer:** Private Sewer **Water:** Drilled, Private **Air Conditioning:** None

#### Driving Directions:



Head to Nisswa, turn right onto Nashway Road, and 0.5 miles up the road the home will be on your left.



Call Affinity Real Estate

**218-237-3333**

[info@affinityrealestate.com](mailto:info@affinityrealestate.com)



Affinity Real Estate - 600 Park Avenue South - Park Rapids MN 56470

Affinity Real Estate Inc. participates in the Regional Multiple Listing Service of Minnesota, Inc Broker Reciprocity (sm) program, allowing us to display other broker's listings on our website. All properties are subject to prior sale, change or withdrawal.



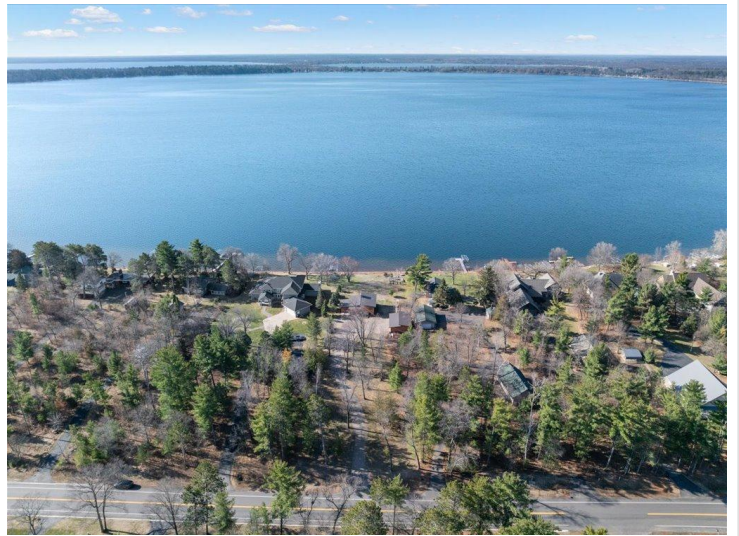


website: [www.AffinityRealEstate.com](http://www.AffinityRealEstate.com) | email: [info@affinityrealestate.com](mailto:info@affinityrealestate.com) | office: 218-237-3333 | fax: 218-237-3377



**\$1,000,000**  
MLS 6746300 Lake Home  
5539 Nashway Road  
Nisswa MN 56468





website: [www.AffinityRealEstate.com](http://www.AffinityRealEstate.com) | email: [info@affinityrealestate.com](mailto:info@affinityrealestate.com) | office: 218-237-3333 | fax: 218-237-3377



**\$1,000,000**  
 MLS 6746300 Lake Home  
 5539 Nashway Road  
 Nisswa MN 56468





website: [www.AffinityRealEstate.com](http://www.AffinityRealEstate.com) | email: [info@affinityrealestate.com](mailto:info@affinityrealestate.com) | office: 218-237-3333 | fax: 218-237-3377



**\$1,000,000**  
 MLS 6746300 Lake Home  
 5539 Nashway Road  
 Nisswa MN 56468





website: [www.AffinityRealEstate.com](http://www.AffinityRealEstate.com) | email: [info@affinityrealestate.com](mailto:info@affinityrealestate.com) | office: 218-237-3333 | fax: 218-237-3377



**\$1,000,000**  
 MLS 6746300 Lake Home  
 5539 Nashway Road  
 Nisswa MN 56468





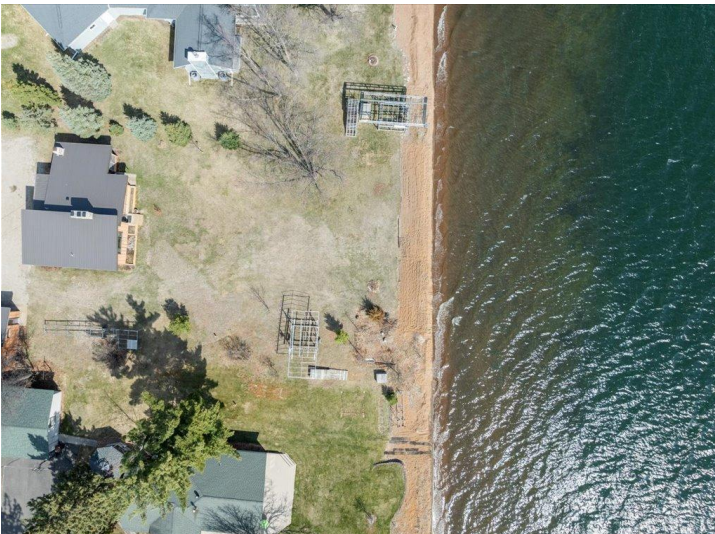
website: [www.AffinityRealEstate.com](http://www.AffinityRealEstate.com) | email: [info@affinityrealestate.com](mailto:info@affinityrealestate.com) | office: 218-237-3333 | fax: 218-237-3377

**Affinity**  
REAL ESTATE INC

**\$1,000,000**

MLS 6746300 Lake Home  
5539 Nashway Road  
Nisswa MN 56468





website: [www.AffinityRealEstate.com](http://www.AffinityRealEstate.com) | email: [info@affinityrealestate.com](mailto:info@affinityrealestate.com) | office: 218-237-3333 | fax: 218-237-3377

**Affinity**  
REAL ESTATE INC

**\$1,000,000**  
MLS 6746300 Lake Home  
5539 Nashway Road  
Nisswa MN 56468



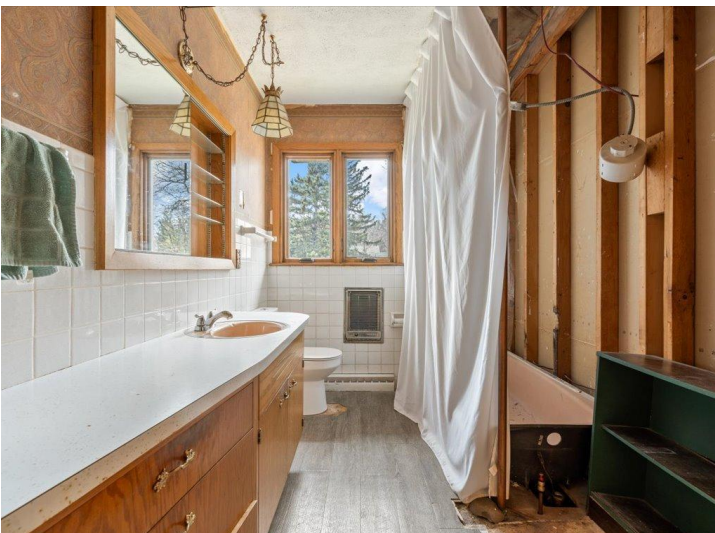


website: [www.AffinityRealEstate.com](http://www.AffinityRealEstate.com) | email: [info@affinityrealestate.com](mailto:info@affinityrealestate.com) | office: 218-237-3333 | fax: 218-237-3377



**\$1,000,000**  
 MLS 6746300 Lake Home  
 5539 Nashway Road  
 Nisswa MN 56468





website: [www.AffinityRealEstate.com](http://www.AffinityRealEstate.com) | email: [info@affinityrealestate.com](mailto:info@affinityrealestate.com) | office: 218-237-3333 | fax: 218-237-3377

**Affinity**  
REAL ESTATE INC

**\$1,000,000**  
MLS 6746300 Lake Home  
5539 Nashway Road  
Nisswa MN 56468





website: [www.AffinityRealEstate.com](http://www.AffinityRealEstate.com) | email: [info@affinityrealestate.com](mailto:info@affinityrealestate.com) | office: 218-237-3333 | fax: 218-237-3377

**Affinity**  
REAL ESTATE INC

**\$1,000,000**  
MLS 6746300 Lake Home  
5539 Nashway Road  
Nisswa MN 56468





website: [www.AffinityRealEstate.com](http://www.AffinityRealEstate.com) | email: [info@affinityrealestate.com](mailto:info@affinityrealestate.com) | office: 218-237-3333 | fax:218-237-3377



**\$1,000,000**  
MLS 6746300 Lake Home  
5539 Nashway Road  
Nisswa MN 56468