



MLS 6746317 Lake Land

\$1,000,000

Description:

Seize the rare opportunity to build your dream lake home or remodel it on the golden sandy shores of Round Lake in Nisswa, Minnesota. This exceptional 108-foot lot at 1.09 acres is part of the storied Gull Lake Chain, and boasts breathtaking south-facing views with sunsets/sunrises along with perfect elevation for a custom-built lakeside retreat. With expansive water frontage and easy access to the water, this property invites endless opportunities for swimming, boating, and relaxation. Recently improved Nashway Road provides quick access, bringing you just minutes from downtown Nisswa's charming shops and dining. Whether you restore the existing MCM cabin or create your ideal vacation home, this unique property offers a combination of peace and adventure in one of Minnesota's premier lakefront communities. Well was drilled in 2019. The seller has been informed verbally that a new build could match the neighboring setbacks.

Additional Details:

Lot Acres	1.09
Lot Dimensions	440x106x440x105
School District	181
Taxes	\$6,806
Taxes with Assessments	\$6,806
Tax Year	2024

Additional Features:

Driving Directions:

Going North on 371 N toward Nisswa, turn right onto Nashway Road, approximately 0.5 miles up the road the lot will be on your right.



Listed By:
Real Broker, LLC

Affinity Real Estate Inc. participates in the Regional Multiple Listing Service of Minnesota, Inc Broker Reciprocity (sm) program, allowing us to display other broker's listings on our website. All properties are subject to prior sale, change or withdrawal.



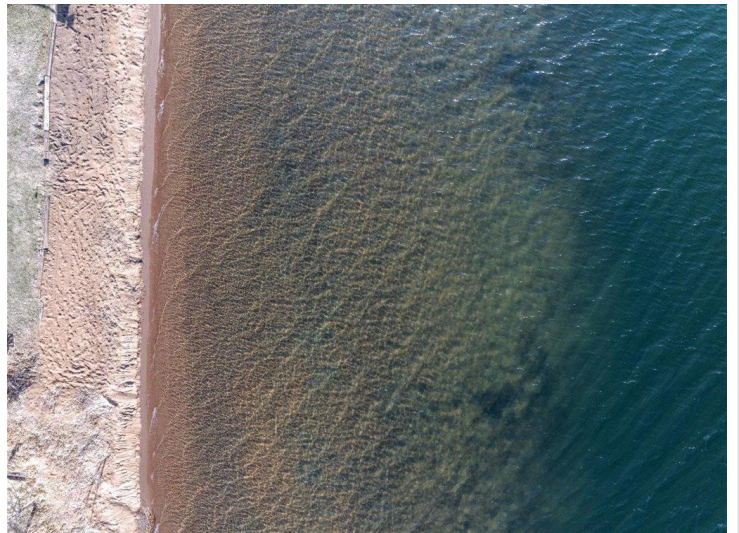
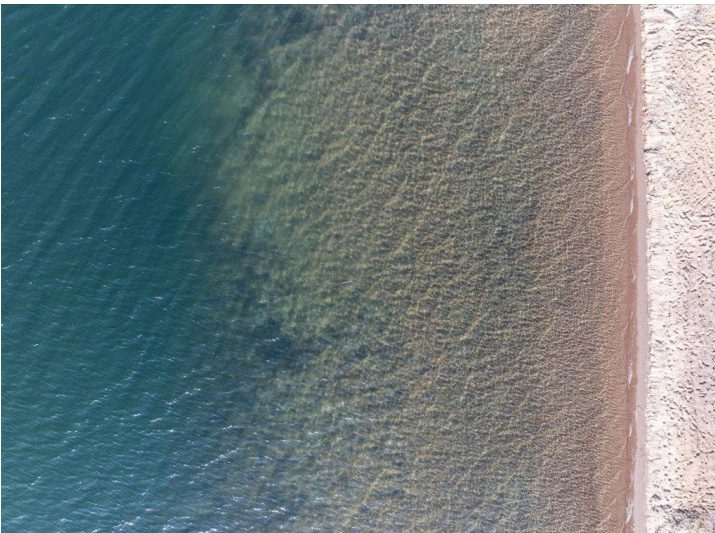
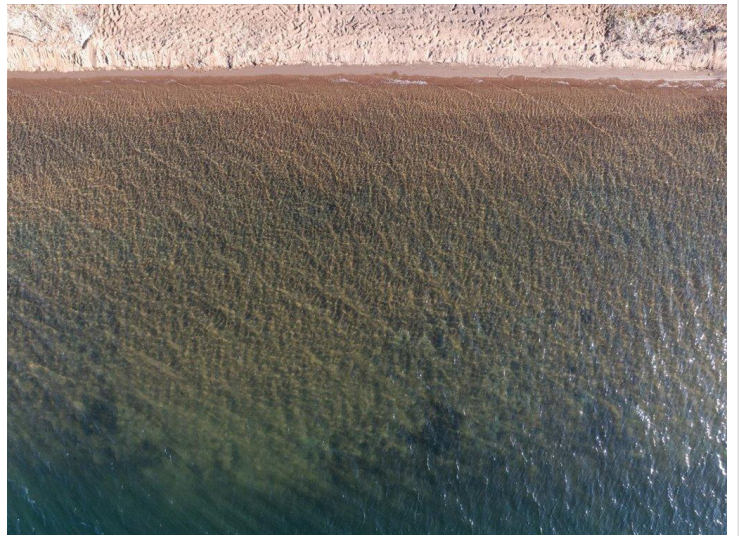
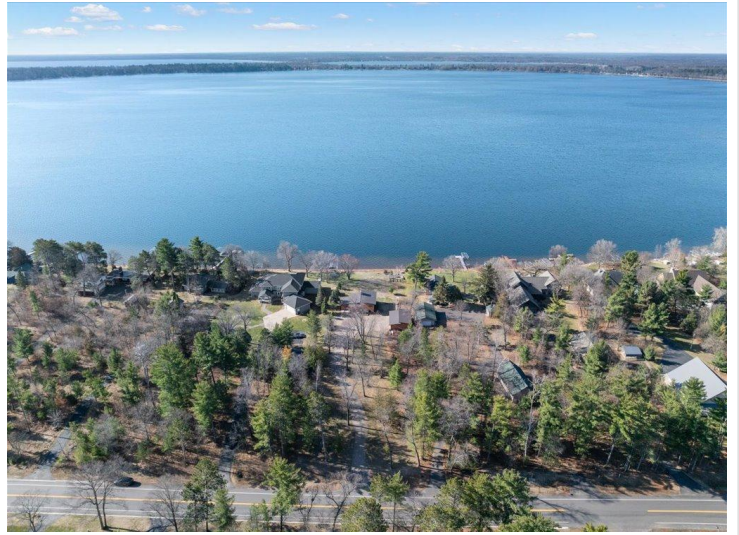
Call Affinity Real Estate

218-237-3333

info@affinityrealestate.com



Affinity Real Estate - 600 Park Avenue South - Park Rapids MN 56470



website: www.AffinityRealEstate.com | email: info@affinityrealestate.com | office: 218-237-3333 | fax: 218-237-3377



\$1,000,000

MLS 6746317 Lake Land
5539- Nashway Road
Nisswa MN 56468



website: www.AffinityRealEstate.com | email: info@affinityrealestate.com | office: 218-237-3333 | fax: 218-237-3377



\$1,000,000
 MLS 6746317 Lake Land
 5539- Nashway Road
 Nisswa MN 56468



website: www.AffinityRealEstate.com | email: info@affinityrealestate.com | office: 218-237-3333 | fax: 218-237-3377



\$1,000,000
 MLS 6746317 Lake Land
 5539- Nashway Road
 Nisswa MN 56468

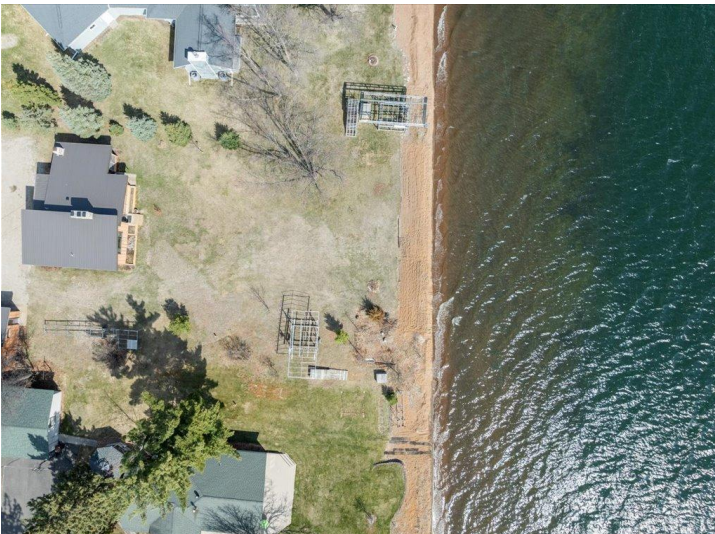


website: www.AffinityRealEstate.com | email: info@affinityrealestate.com | office: 218-237-3333 | fax: 218-237-3377

Affinity
REAL ESTATE INC

\$1,000,000

MLS 6746317 Lake Land
5539- Nashway Road
Nisswa MN 56468



website: www.AffinityRealEstate.com | email: info@affinityrealestate.com | office: 218-237-3333 | fax: 218-237-3377

Affinity
REAL ESTATE INC

\$1,000,000
MLS 6746317 Lake Land
5539- Nashway Road
Nisswa MN 56468



website: www.AffinityRealEstate.com | email: info@affinityrealestate.com | office: 218-237-3333 | fax:218-237-3377



\$1,000,000

MLS 6746317 Lake Land
5539- Nashway Road
Nisswa MN 56468