



MLS 6746339 Lake Home

\$524,900

974 sq ft
3 bedrooms
1 baths

14354 Chippewa Loop
Park Rapids MN 56470

Waterfront: Long Lake (29016100)

Status: Active

Description:

Discover an extraordinary opportunity to own a cherished piece of history in Chippewa Loop - this property has been in the same family for nearly a century! This charming 3-bedroom seasonal cabin boasts 85 feet of pristine level sandy shoreline, inviting you to enjoy lakeside living. Inside, you'll find a wealth of original features, from the elegant hardwood floors to the nostalgic hanging kerosene lamps, each telling a story of days gone by. The sunroom offers a breathtaking view of the lake, perfect for soaking in the beauty of your surroundings. There is ample space on the 100-foot back lot to build a garage for all your water toys. Don't miss your chance to create lasting memories in this one-of-a-kind retreat! Most furnishings and dock included.

Additional Details:

Year Built	1929
Lot Acres	0.77
Lot Dimensions	85x195x89x209
School District	309
Taxes	\$2,067
Taxes with Assessments	\$2,288
Tax Year	2025

Additional Features:

Basement: Crawl Space **Fuel:** Electric **Heat:** Baseboard **Sewer:** Private Sewer, Tank with Drainage Field **Water:** Sand Point, Well **Air Conditioning:** None

Driving Directions:

34/71 stoplights. East on 34 to County 6. South on County 6. Left on Chippewa Loop to #14354 on left.



Listed By:
Wolff & Simon Real Estate

Affinity Real Estate Inc. participates in the Regional Multiple Listing Service of Minnesota, Inc Broker Reciprocity (sm) program, allowing us to display other broker's listings on our website. All properties are subject to prior sale, change or withdrawal.



Call Affinity Real Estate

218-237-3333

info@affinityrealestate.com



Affinity Real Estate - 600 Park Avenue South - Park Rapids MN 56470



website: www.AffinityRealEstate.com | email: info@affinityrealestate.com | office: 218-237-3333 | fax: 218-237-3377

Affinity
REAL ESTATE INC

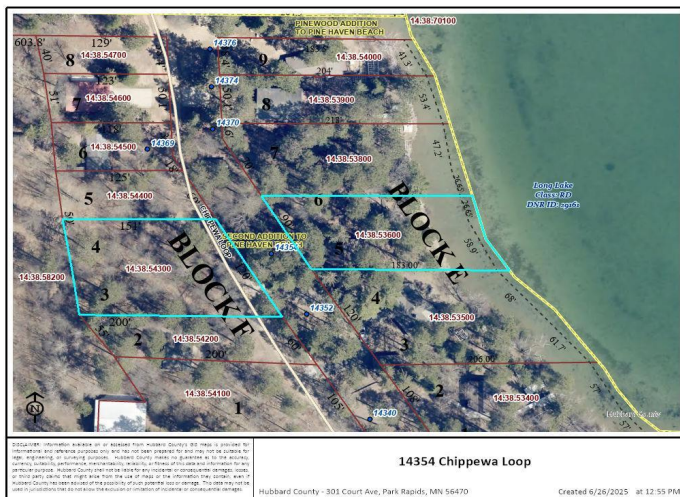
\$524,900
MLS 6746339 Lake Home
14354 Chippewa Loop
Park Rapids MN 56470



website: www.AffinityRealEstate.com | email: info@affinityrealestate.com | office: 218-237-3333 | fax: 218-237-3377

Affinity
REAL ESTATE INC

\$524,900
MLS 6746339 Lake Home
14354 Chippewa Loop
Park Rapids MN 56470



website: www.AffinityRealEstate.com | email: info@affinityrealestate.com | office: 218-237-3333 | fax: 218-237-3377



\$524,900
 MLS 6746339 Lake Home
 14354 Chippewa Loop
 Park Rapids MN 56470

website: www.AffinityRealEstate.com | email: info@affinityrealestate.com | office: 218-237-3333 | fax: 218-237-3377



\$524,900

MLS 6746339 Lake Home
14354 Chippewa Loop
Park Rapids MN 56470