



MLS 6746429 Residential

\$343,900

2,417 sq ft
4 bedrooms
2 baths

316 6th Street
Brainerd MN 56401

Status: Active

Description:

Step into this HISTORIC & ELEGANT HOME full of Stunning Craftsmanship! You'll love the High & Beamed Ceilings, Exquisite Original Woodwork, Wood Floors, Excellent Curb Appeal, Fenced-in Front Yard & Private Backyard! Many Updates in the last couple years: New Roof in 2024, New Kitchen Appliances & Washer/Dryer, Rebuilt Entry Alcove, Front Steps, Water Heater, Interior Paint & Kitchen Cabinets, Insulated Garage & More! Located in a Highly Desirable Brainerd Neighborhood next to Gregory Park, you'll be impressed by the Warm, Inviting Atmosphere, Spacious Kitchen and Expansive Upstairs Family Room, all perfect for entertaining, family gatherings. or just a space to relax. 3 Bedrooms & Office (or 4th BR) all on one level. Both the Charming 3-Season Porch or Sunroom provide cozy spots to enjoy your morning coffee or unwind with a good book!

With this perfect combination of Historic Character, Modern Convenience, and an Unbeatable Location near parks, trails, and community amenities, you'll see this property is a Special & Rare Find!

Additional Details:

Year Built	1916
Lot Acres	0.17
Lot Dimensions	150x50
Garage Stalls	2
School District	181
Taxes	\$2,899
Taxes with Assessments	\$2,924
Tax Year	2025

Additional Features:

Basement: Full, Partially Finished **Fuel:** Natural Gas **Garage:** 2 **Heat:** Boiler **Sewer:** City Sewer/Connected **Water:** City Water/Connected **Air Conditioning:** Window Unit(s)

Driving Directions:

From Washington St/210 in Brainerd, turn North onto 6th St N to property on the right.



Listed By:
Weichert REALTORS Tower Properties

Affinity Real Estate Inc. participates in the Regional Multiple Listing Service of Minnesota, Inc Broker Reciprocity (sm) program, allowing us to display other broker's listings on our website. All properties are subject to prior sale, change or withdrawal.



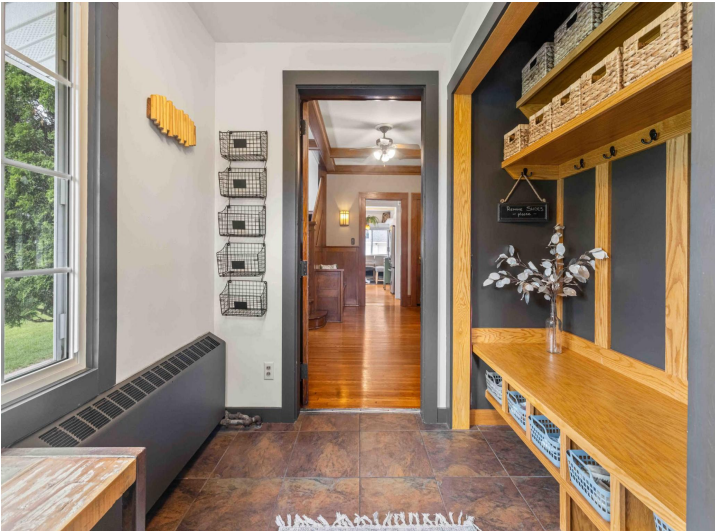
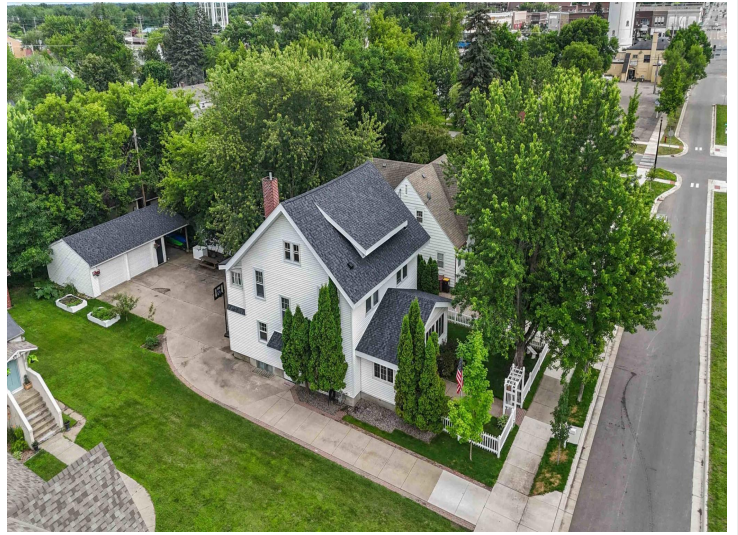
Call Affinity Real Estate

218-237-3333

info@affinityrealestate.com



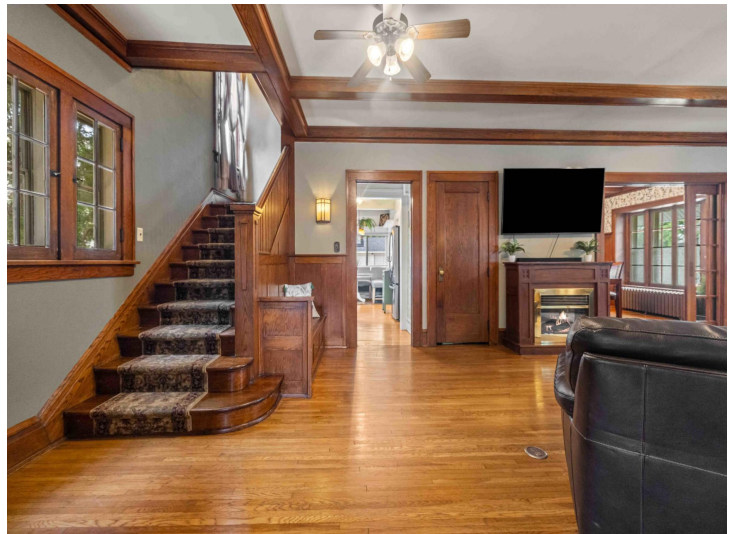
Affinity Real Estate - 600 Park Avenue South - Park Rapids MN 56470



website: www.AffinityRealEstate.com | email: info@affinityrealestate.com | office: 218-237-3333 | fax: 218-237-3377

Affinity
REAL ESTATE INC

\$343,900
MLS 6746429 Residential
316 6th Street
Brainerd MN 56401



website: www.AffinityRealEstate.com | email: info@affinityrealestate.com | office: 218-237-3333 | fax: 218-237-3377

Affinity
REAL ESTATE INC

\$343,900
MLS 6746429 Residential
316 6th Street
Brainerd MN 56401



website: www.AffinityRealEstate.com | email: info@affinityrealestate.com | office: 218-237-3333 | fax: 218-237-3377

Affinity
REAL ESTATE INC

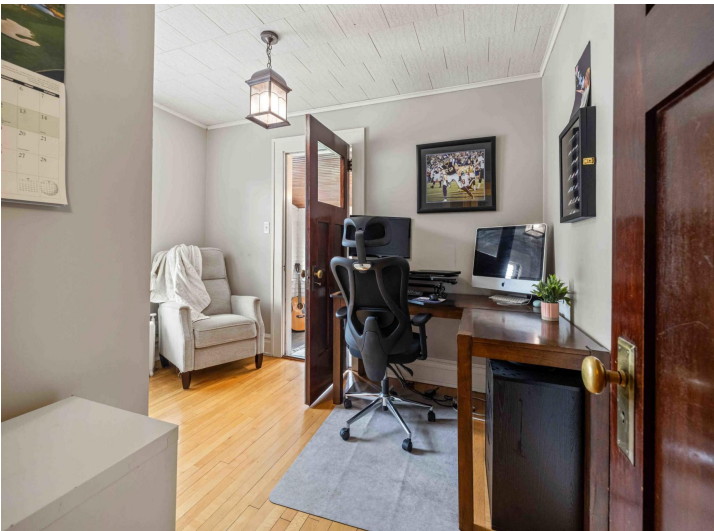
\$343,900
MLS 6746429 Residential
316 6th Street
Brainerd MN 56401



website: www.AffinityRealEstate.com | email: info@affinityrealestate.com | office: 218-237-3333 | fax: 218-237-3377

Affinity
REAL ESTATE INC

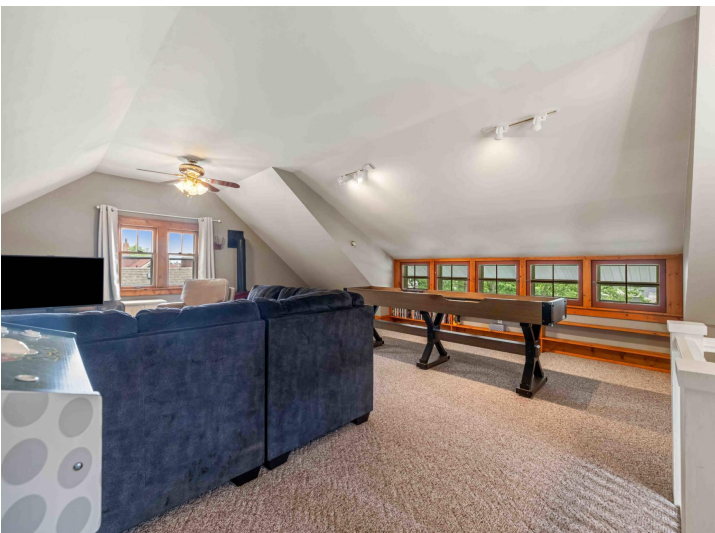
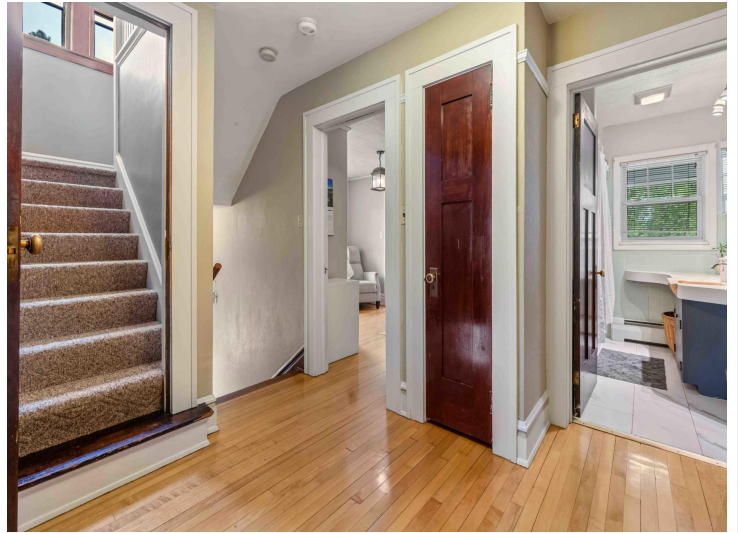
\$343,900
MLS 6746429 Residential
316 6th Street
Brainerd MN 56401



website: www.AffinityRealEstate.com | email: info@affinityrealestate.com | office: 218-237-3333 | fax: 218-237-3377

Affinity
REAL ESTATE INC

\$343,900
MLS 6746429 Residential
316 6th Street
Brainerd MN 56401



website: www.AffinityRealEstate.com | email: info@affinityrealestate.com | office: 218-237-3333 | fax: 218-237-3377

Affinity
REAL ESTATE INC

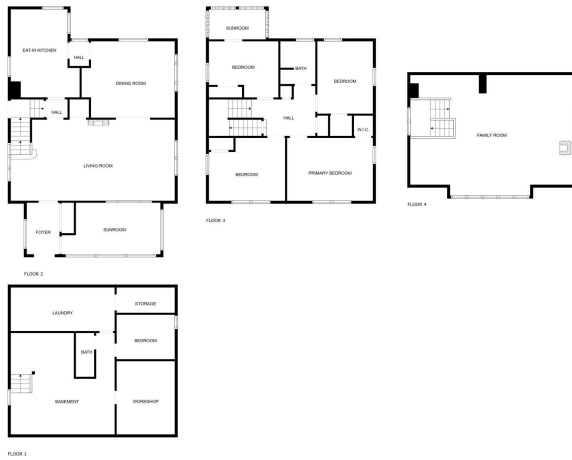
\$343,900
MLS 6746429 Residential
316 6th Street
Brainerd MN 56401



website: www.AffinityRealEstate.com | email: info@affinityrealestate.com | office: 218-237-3333 | fax: 218-237-3377



\$343,900
 MLS 6746429 Residential
 316 6th Street
 Brainerd MN 56401



FLOOR PLAN CREATED BY CUBICASA APP. MEASUREMENTS DEEMED HIGHLY RELIABLE BUT NOT GUARANTEED.

website: www.AffinityRealEstate.com | email: info@affinityrealestate.com | office: 218-237-3333 | fax: 218-237-3377



\$343,900
 MLS 6746429 Residential
 316 6th Street
 Brainerd MN 56401