



MLS 6746496 Residential

\$298,000

1,824 sq ft
5 bedrooms
2 baths

7704 Whispering Woods Lane
Brainerd MN 56401

Status: Pending

Description:

Looking for Backyard Space, Privacy, and Convenience? This 5-bedroom, 2-bath Home sits on almost a Full Wooded Acre and has a partially Fenced Backyard with a Patio—perfect for BBQs, pets, or just hanging out. Inside, you'll find partial slab home (main-level living option) & partial split level, with a very Spacious upper-level Primary Suite, with Large Walk-in Closet & soon to be added Mini-Split for AC/heat. The Flex Room would work for a small office space & the Oversized Garage gives you plenty of room for storage or hobbies. The Maintenance-Free Siding means less work for you. Even better? You're just minutes from popular restaurants, shopping, and everything else you need. A great mix of Peaceful Living and Easy Access to town—come check it out!

Additional Details:

Year Built	1994
Lot Acres	0.94
Lot Dimensions	196x209x197x209
Garage Stalls	2
School District	181
Taxes	\$2,717
Taxes with Assessments	\$2,742
Tax Year	2025

Additional Features:

Basement: Finished, Partial **Fuel:** Electric, Natural Gas **Garage:** 2 **Heat:** Baseboard, Ductless Mini-Split, Forced Air **Sewer:** Tank with Drainage Field **Water:** Drilled, Well **Air Conditioning:** Central Air, Ductless Mini-Split

Driving Directions:

From Applebees restaurant & Menards on Dellwood Dr in Baxter, turn East on Whispering Woods Ln to property on the Left.



Listed By:
Weichert REALTORS Tower Properties

Affinity Real Estate Inc. participates in the Regional Multiple Listing Service of Minnesota, Inc Broker Reciprocity (sm) program, allowing us to display other broker's listings on our website. All properties are subject to prior sale, change or withdrawal.



Call Affinity Real Estate

218-237-3333

info@affinityrealestate.com



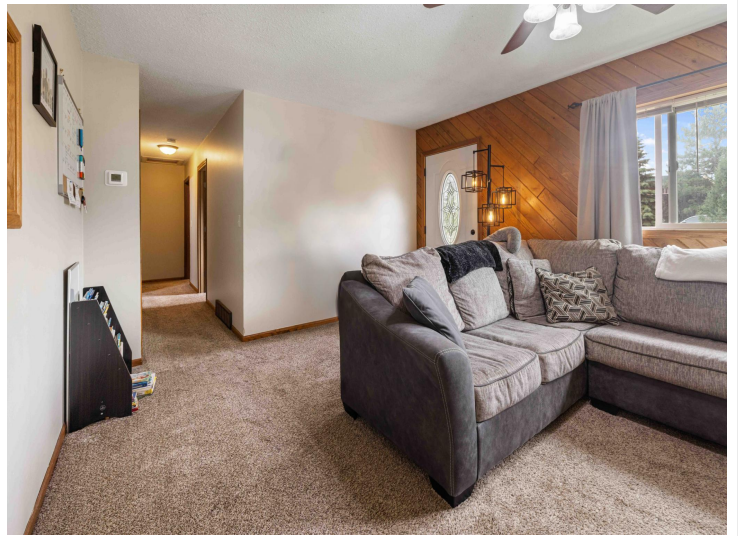
Affinity Real Estate - 600 Park Avenue South - Park Rapids MN 56470



website: www.AffinityRealEstate.com | email: info@affinityrealestate.com | office: 218-237-3333 | fax: 218-237-3377

Affinity
REAL ESTATE INC

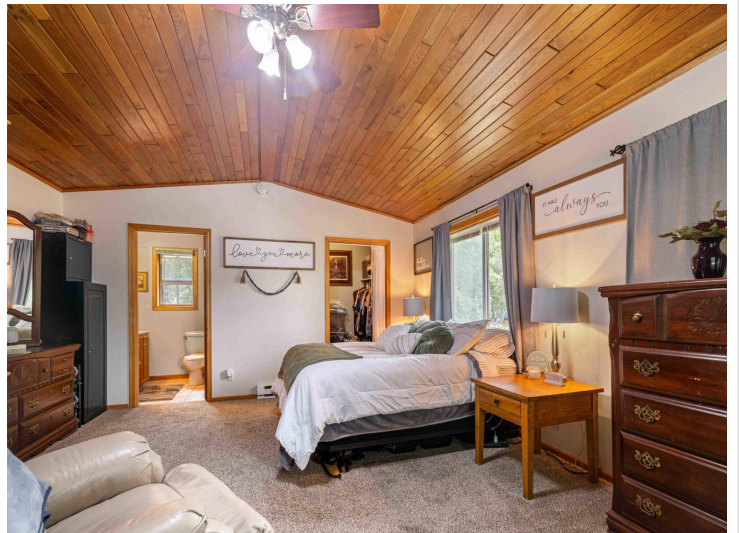
\$298,000
MLS 6746496 Residential
7704 Whispering Woods
Lane
Brainerd MN 56401



website: www.AffinityRealEstate.com | email: info@affinityrealestate.com | office: 218-237-3333 | fax: 218-237-3377

Affinity
REAL ESTATE INC

\$298,000
MLS 6746496 Residential
7704 Whispering Woods
Lane
Brainerd MN 56401



website: www.AffinityRealEstate.com | email: info@affinityrealestate.com | office: 218-237-3333 | fax: 218-237-3377

Affinity
REAL ESTATE INC

\$298,000
MLS 6746496 Residential
7704 Whispering Woods
Lane
Brainerd MN 56401



website: www.AffinityRealEstate.com | email: info@affinityrealestate.com | office: 218-237-3333 | fax: 218-237-3377

Affinity
REAL ESTATE INC

\$298,000
MLS 6746496 Residential
7704 Whispering Woods
Lane
Brainerd MN 56401



website: www.AffinityRealEstate.com | email: info@affinityrealestate.com | office: 218-237-3333 | fax: 218-237-3377



\$298,000
MLS 6746496 Residential
7704 Whispering Woods
Lane
Brainerd MN 56401