



MLS 6746730 Land

**\$60,000**

0.46 Acres

Other

231 Park Circle  
Ottertail MN 56571

Status: Active

**Description:**

.46 Acre Corner Lot in Ottertail with Garage.

Beautiful and level .46-acre corner lot in the City of Ottertail. Prime building site features mature trees and includes a 26' x 30' Garage with double doors—ready for storage or future use. Conveniently located within walking distance to Thumper Pond Golf Course, Otter Tail Lake, and several local restaurants.

**Additional Details:**

Lot Acres	0.46
Lot Dimensions	100 x 210
School District	549
Taxes	\$364
Taxes with Assessments	\$364
Tax Year	2024

**Additional Features:**

**Driving Directions:**

Corner of State Hwy 108 & Hwy 78



Listed By:  
Boll Realty

Affinity Real Estate Inc. participates in the Regional Multiple Listing Service of Minnesota, Inc Broker Reciprocity (sm) program, allowing us to display other broker's listings on our website. All properties are subject to prior sale, change or withdrawal.



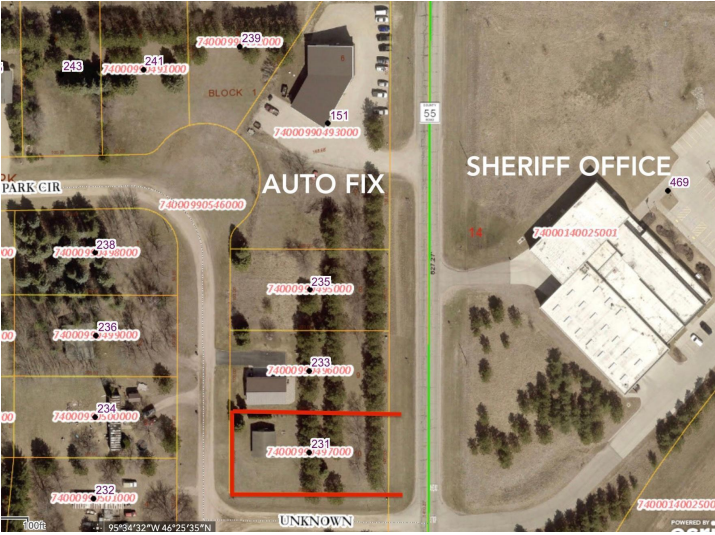
**Call Affinity Real Estate**

**218-237-3333**

**info@affinityrealestate.com**



**Affinity Real Estate - 600 Park Avenue South - Park Rapids MN 56470**



website: [www.AffinityRealEstate.com](http://www.AffinityRealEstate.com) | email: [info@affinityrealestate.com](mailto:info@affinityrealestate.com) | office: 218-237-3333 | fax: 218-237-3377



**\$60,000**  
 MLS 6746730 Land  
 231 Park Circle  
 Ottertail MN 56571



website: [www.AffinityRealEstate.com](http://www.AffinityRealEstate.com) | email: [info@affinityrealestate.com](mailto:info@affinityrealestate.com) | office: 218-237-3333 | fax: 218-237-3377



**\$60,000**  
 MLS 6746730 Land  
 231 Park Circle  
 Ottertail MN 56571



website: [www.AffinityRealEstate.com](http://www.AffinityRealEstate.com) | email: [info@affinityrealestate.com](mailto:info@affinityrealestate.com) | office: 218-237-3333 | fax: 218-237-3377



**\$60,000**  
 MLS 6746730 Land  
 231 Park Circle  
 Ottertail MN 56571



website: [www.AffinityRealEstate.com](http://www.AffinityRealEstate.com) | email: [info@affinityrealestate.com](mailto:info@affinityrealestate.com) | office: 218-237-3333 | fax:218-237-3377



**\$60,000**  
MLS 6746730 Land  
231 Park Circle  
Ottertail MN 56571