



MLS 6746838 Lake Home

**\$489,900**

1,237 sq ft  
3 bedrooms  
2 baths

21014 Eagle Drive  
Osakis MN 56360

Waterfront: Osakis

Status: Coming Soon

#### Description:

**\*\*For Sale: 3-Bedroom, 2-Bath Year-Round Lake Cabin on Lake Osakis – Newly Constructed in 2024\*\* ( BONUS - 2 Additional Rooms in the loft currently used as EXTRA bedrooms)**

Discover your dream lakefront retreat with this stunning, newly constructed year-round 3-bedroom, 2-bathroom cabin nestled on 80 feet of pristine Lake Osakis shoreline. With 1,237 square feet of cozy living space, this newly constructed lake cabin is the perfect blend of modern amenities and classic charm, featuring barn wood accents and a loft with two additional bonus rooms currently used as bedrooms!

The cabin's open-concept living room/kitchen combined with the walk out patio entertainment area overlooking Lake Osakis are the heart of the home, this cabin features in-floor heat, a forced air furnace, central air conditioning, and naughty pine vaulted ceiling. The kitchen is a masterpiece, complete with Amish-built black walnut butcher block countertops, Knotty hickory cabinets, and matching accents, making it as functional as it is beautiful. With breathtaking lake views, this property offers the perfect spot for family gatherings or as a turnkey short term rental investment. List Price is for the home unfurnished, but all personal property is negotiable.

This property currently is used as a short term rental property all showings must be scheduled July 7th - July 10th.

#### Additional Details:

Year Built	2024
Lot Acres	0.36
Lot Dimensions	80 x 200 x 116 x 150
Garage Stalls	2
School District	213
Taxes	\$1,352
Taxes with Assessments	\$1,352
Tax Year	2025

#### Additional Features:

**Basement:** Concrete **Fuel:** Propane **Garage:** 2 **Heat:** Forced Air, Radiant Floor **Sewer:** Holding Tank **Water:** Drilled, Private **Air Conditioning:** Central Air



Listed By:  
Conn Crete Realty Solutions

RD 10, turn right onto 210th st, turn left onto eagle st, drive on the lake side of the road.  
Affinity Real Estate Inc. participates in the Regional Multiple Listing Service of Minnesota, Inc Broker Reciprocity (sm) program, allowing us to display other broker's listings on our website. All properties are subject to prior sale, change or withdrawal.



**Call Affinity Real Estate**

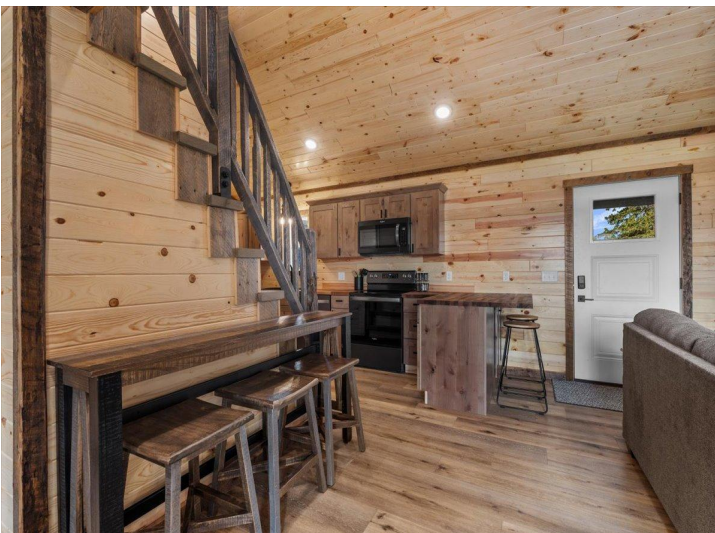
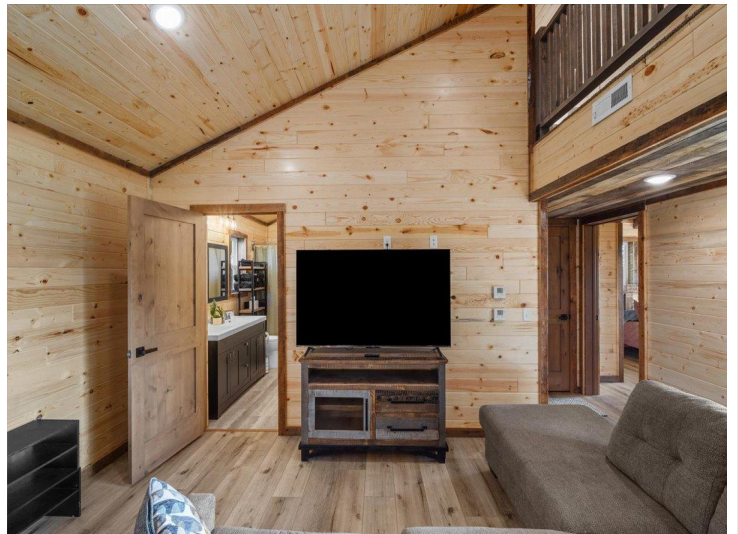
**218-237-3333**

**info@affinityrealestate.com**



**Affinity Real Estate - 600 Park Avenue South - Park Rapids MN 56470**



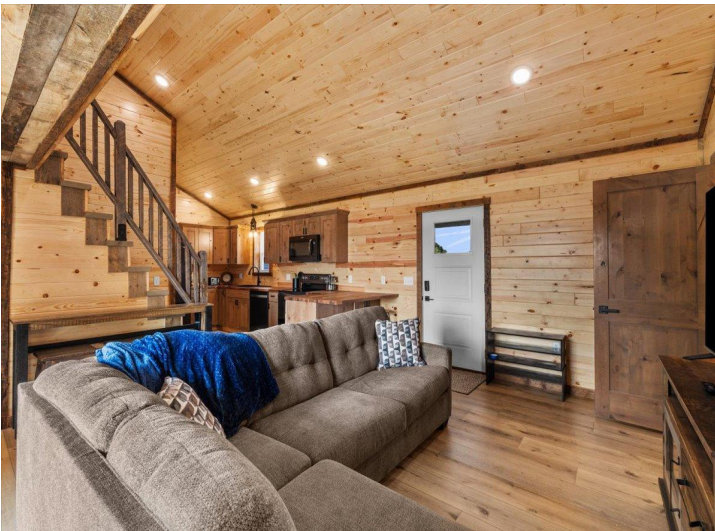


website: [www.AffinityRealEstate.com](http://www.AffinityRealEstate.com) | email: [info@affinityrealestate.com](mailto:info@affinityrealestate.com) | office: 218-237-3333 | fax: 218-237-3377



**\$489,900**  
 MLS 6746838 Lake Home  
 21014 Eagle Drive  
 Osakis MN 56360



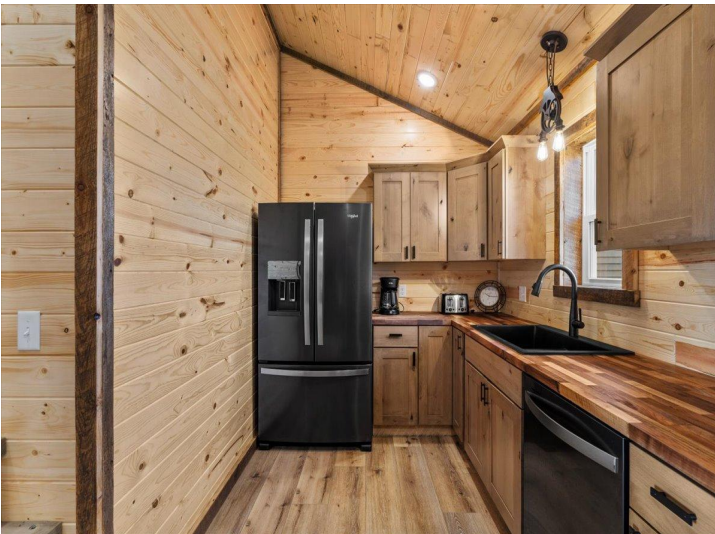


website: [www.AffinityRealEstate.com](http://www.AffinityRealEstate.com) | email: [info@affinityrealestate.com](mailto:info@affinityrealestate.com) | office: 218-237-3333 | fax: 218-237-3377



**\$489,900**  
 MLS 6746838 Lake Home  
 21014 Eagle Drive  
 Osakis MN 56360



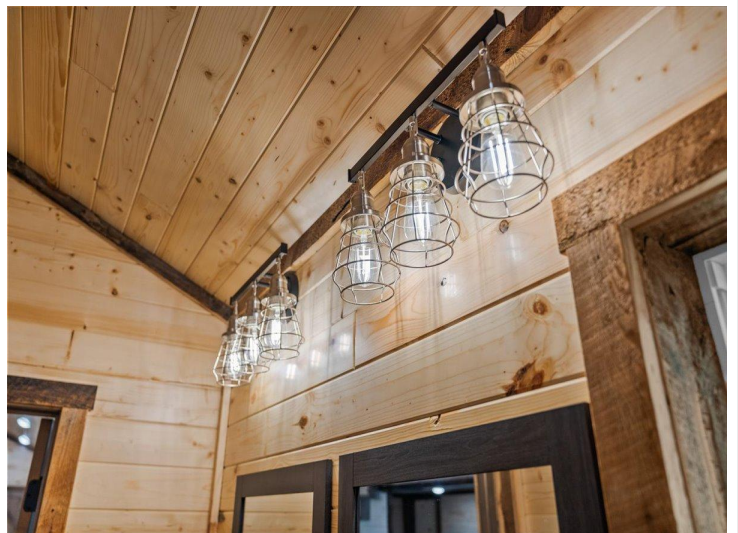


website: [www.AffinityRealEstate.com](http://www.AffinityRealEstate.com) | email: [info@affinityrealestate.com](mailto:info@affinityrealestate.com) | office: 218-237-3333 | fax: 218-237-3377



**\$489,900**  
 MLS 6746838 Lake Home  
 21014 Eagle Drive  
 Osakis MN 56360





website: [www.AffinityRealEstate.com](http://www.AffinityRealEstate.com) | email: [info@affinityrealestate.com](mailto:info@affinityrealestate.com) | office: 218-237-3333 | fax: 218-237-3377

**Affinity**  
REAL ESTATE INC

**\$489,900**  
MLS 6746838 Lake Home  
21014 Eagle Drive  
Osakis MN 56360





website: [www.AffinityRealEstate.com](http://www.AffinityRealEstate.com) | email: [info@affinityrealestate.com](mailto:info@affinityrealestate.com) | office: 218-237-3333 | fax: 218-237-3377

**Affinity**  
REAL ESTATE INC

**\$489,900**  
MLS 6746838 Lake Home  
21014 Eagle Drive  
Osakis MN 56360





website: [www.AffinityRealEstate.com](http://www.AffinityRealEstate.com) | email: [info@affinityrealestate.com](mailto:info@affinityrealestate.com) | office: 218-237-3333 | fax: 218-237-3377



**\$489,900**  
 MLS 6746838 Lake Home  
 21014 Eagle Drive  
 Osakis MN 56360





website: [www.AffinityRealEstate.com](http://www.AffinityRealEstate.com) | email: [info@affinityrealestate.com](mailto:info@affinityrealestate.com) | office: 218-237-3333 | fax: 218-237-3377

**Affinity**  
REAL ESTATE INC

**\$489,900**  
MLS 6746838 Lake Home  
21014 Eagle Drive  
Osakis MN 56360





website: [www.AffinityRealEstate.com](http://www.AffinityRealEstate.com) | email: [info@affinityrealestate.com](mailto:info@affinityrealestate.com) | office: 218-237-3333 | fax: 218-237-3377



**\$489,900**  
 MLS 6746838 Lake Home  
 21014 Eagle Drive  
 Osakis MN 56360





website: [www.AffinityRealEstate.com](http://www.AffinityRealEstate.com) | email: [info@affinityrealestate.com](mailto:info@affinityrealestate.com) | office: 218-237-3333 | fax: 218-237-3377



**\$489,900**  
 MLS 6746838 Lake Home  
 21014 Eagle Drive  
 Osakis MN 56360





website: [www.AffinityRealEstate.com](http://www.AffinityRealEstate.com) | email: [info@affinityrealestate.com](mailto:info@affinityrealestate.com) | office: 218-237-3333 | fax: 218-237-3377

**Affinity**  
REAL ESTATE INC

**\$489,900**  
MLS 6746838 Lake Home  
21014 Eagle Drive  
Osakis MN 56360





website: [www.AffinityRealEstate.com](http://www.AffinityRealEstate.com) | email: [info@affinityrealestate.com](mailto:info@affinityrealestate.com) | office: 218-237-3333 | fax: 218-237-3377



**\$489,900**  
MLS 6746838 Lake Home  
21014 Eagle Drive  
Osakis MN 56360