



MLS 6746922 Residential

\$699,900

2,375 sq ft
4 bedrooms
3 baths

1556 Maplewood Ridge Road
Brainerd MN 56401

Status: Active

Description:

Gorgeous one level home in a prime location, East Gull Lake, only 5 minutes to the best golfing, dining and recreation the Lakes Area has to offer. Drive or take your golf cart with the East Gull Lake trail system. This home is in a quiet, secluded neighborhood surrounded by mature trees. High end finishes throughout including vaults/tray ceilings with hardwood knotty alder doors and trim. LVP flooring throughout with tile in the master bathroom. All showers and bathtub surrounds are tiled. The kitchen has custom cabinetry and a butler's pantry. Oversized 3-stall heated and finished garage. RV parking next to garage with 50-amp hookup. Yard has in ground sprinklers and three separate outdoor patio areas. Beautiful master bedroom with a huge walk-through closet with built-ins. Master bath with a walk-through shower and soaking tub. A second junior suite boasts a walk-in closet and ensuite bathroom. New double oven, fenced in yard and private patio since sellers moved in.

Additional Details:

Year Built	2021
Lot Acres	2.45
Lot Dimensions	202x591x170x614
Garage Stalls	3
School District	181
Taxes	\$3,562
Taxes with Assessments	\$3,562
Tax Year	2024

Additional Features:

Basement: None **Fuel:** Propane **Garage:** 3 **Heat:** Forced Air, Fireplace(s) **Sewer:** Mound Septic, Tank with Drainage Field **Water:** Drilled, Well
Air Conditioning: Central Air

Driving Directions:

From HWY 210 take county HWY 18 SW to 120th St.; Left onto Maplewood Ridge CT to a left onto Maplewood Ridge Rd.



Listed By:
RES Realty

Affinity Real Estate Inc. participates in the Regional Multiple Listing Service of Minnesota, Inc Broker Reciprocity (sm) program, allowing us to display other broker's listings on our website. All properties are subject to prior sale, change or withdrawal.



Call Affinity Real Estate

218-237-3333

info@affinityrealestate.com



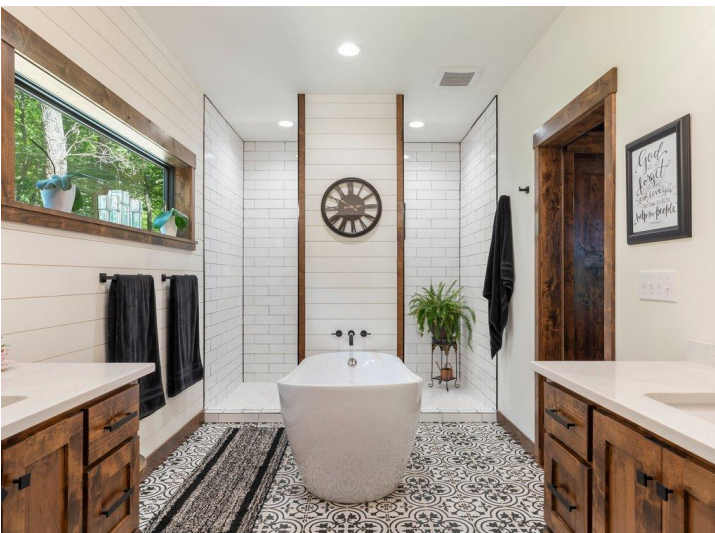
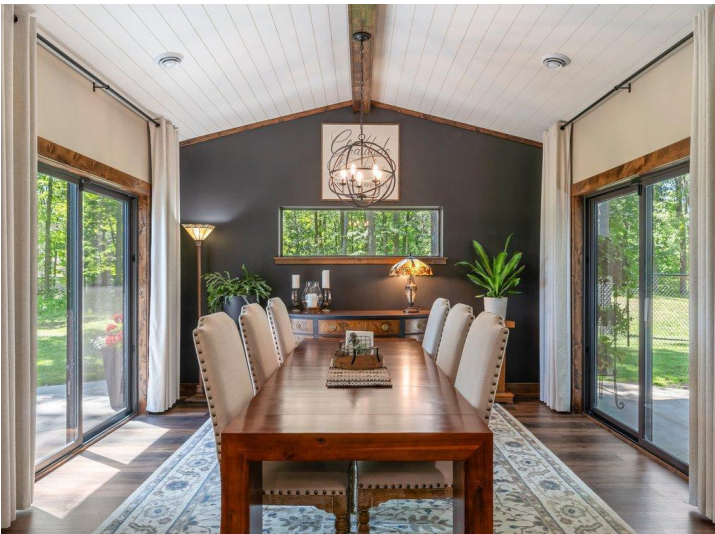
Affinity Real Estate - 600 Park Avenue South - Park Rapids MN 56470



website: www.AffinityRealEstate.com | email: info@affinityrealestate.com | office: 218-237-3333 | fax: 218-237-3377



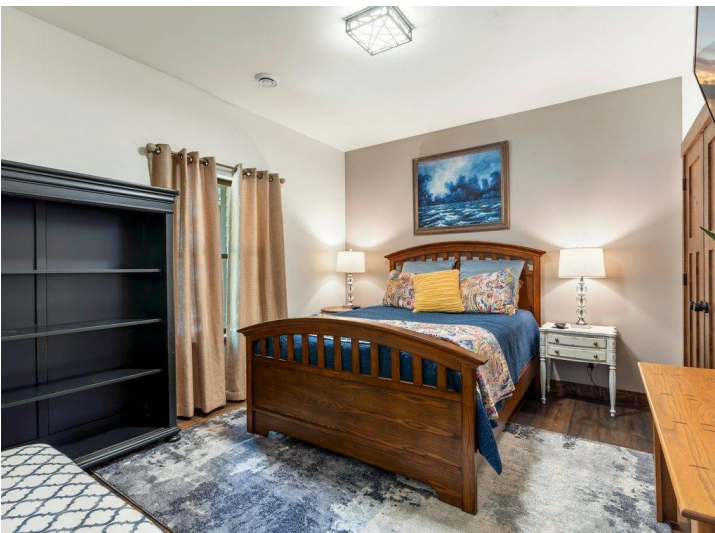
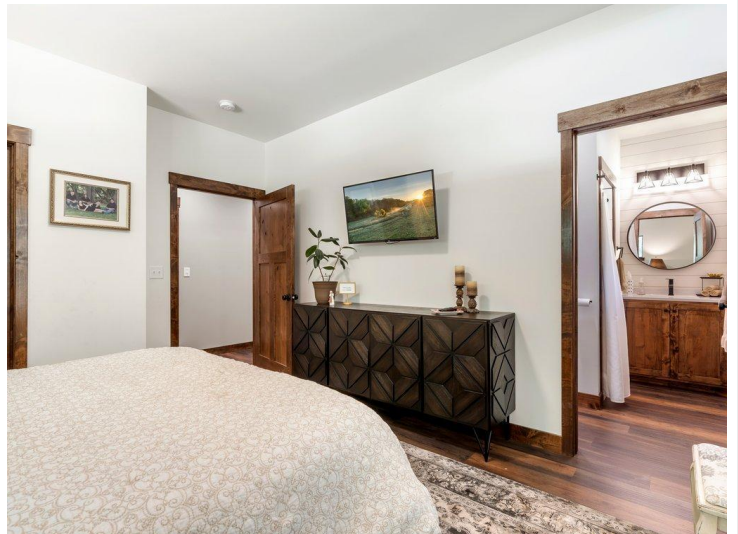
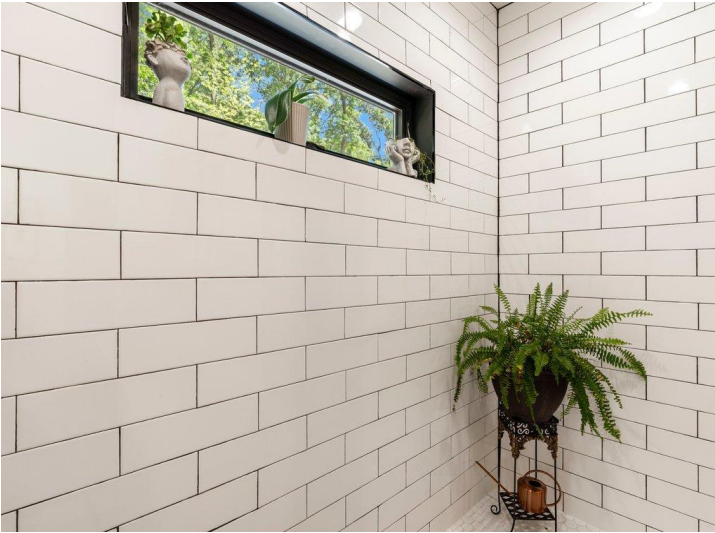
\$699,900
 MLS 6746922 Residential
 1556 Maplewood Ridge
 Road
 Brainerd MN 56401



website: www.AffinityRealEstate.com | email: info@affinityrealestate.com | office: 218-237-3333 | fax: 218-237-3377

Affinity
REAL ESTATE INC

\$699,900
MLS 6746922 Residential
1556 Maplewood Ridge
Road
Brainerd MN 56401



website: www.AffinityRealEstate.com | email: info@affinityrealestate.com | office: 218-237-3333 | fax: 218-237-3377



\$699,900
 MLS 6746922 Residential
 1556 Maplewood Ridge
 Road
 Brainerd MN 56401



website: www.AffinityRealEstate.com | email: info@affinityrealestate.com | office: 218-237-3333 | fax: 218-237-3377

Affinity
REAL ESTATE INC

\$699,900
MLS 6746922 Residential
1556 Maplewood Ridge
Road
Brainerd MN 56401



website: www.AffinityRealEstate.com | email: info@affinityrealestate.com | office: 218-237-3333 | fax: 218-237-3377



\$699,900
MLS 6746922 Residential
1556 Maplewood Ridge
Road
Brainerd MN 56401