



MLS 6747012 Residential

\$399,000

384 sq ft
2 bedrooms
2 baths

41565 Thunder Road
Clitherall MN 56524

Status: Active

Description:

Custom-built 'Barndominium' on 2.6 acres in the heart of lakes country. 2 bedroom, 2 bath, this structure was designed by Patti West and built by Heath West, a licensed builder of 30+ years. Unique design with custom detailing and quality workmanship was the goal. Features include a great open floor plan with large windows facing south, a vaulted ceiling, floor plan with large windows facing South, a vaulted ceiling exposed beams, and a covered patio to enjoy. The garage portion has two 10'x12' doors and a smaller door that opens to the patio to enjoy and store all your toys, etc. There is a bonus room above the garage with a neat staircase and a custom railing that leads to an awesome space with plenty of glass to enjoy the view. Quality and one of a kind. (1.3 acres additional property available for \$30,000).

Additional Details:

Year Built	2024
Lot Acres	2.58
Lot Dimensions	170x663
Garage Stalls	2
School District	542
Taxes	\$1,182
Taxes with Assessments	\$1,182
Tax Year	2025

Additional Features:

Basement: None **Fuel:** Propane **Garage:** 2 **Heat:** Boiler, Ductless Mini-Split, Radiant Floor **Sewer:** Private Sewer, Septic System Compliant - Yes
Water: Other **Air Conditioning:** Ductless Mini-Split

Driving Directions:

From County Road 5 and Thunder Road go East on Thunder Road 2 tenths of a mile to property on North side of roadway.



Listed By:
Century 21 Atwood

Affinity Real Estate Inc. participates in the Regional Multiple Listing Service of Minnesota, Inc Broker Reciprocity (sm) program, allowing us to display other broker's listings on our website. All properties are subject to prior sale, change or withdrawal.



Call Affinity Real Estate

218-237-3333

info@affinityrealestate.com



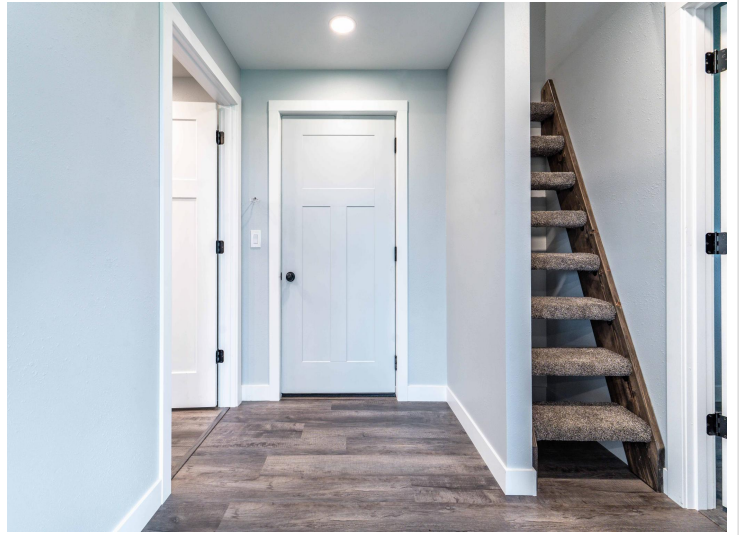
Affinity Real Estate - 600 Park Avenue South - Park Rapids MN 56470



website: www.AffinityRealEstate.com | email: info@affinityrealestate.com | office: 218-237-3333 | fax: 218-237-3377



\$399,000
MLS 6747012 Residential
41565 Thunder Road
Clitherall MN 56524



website: www.AffinityRealEstate.com | email: info@affinityrealestate.com | office: 218-237-3333 | fax: 218-237-3377



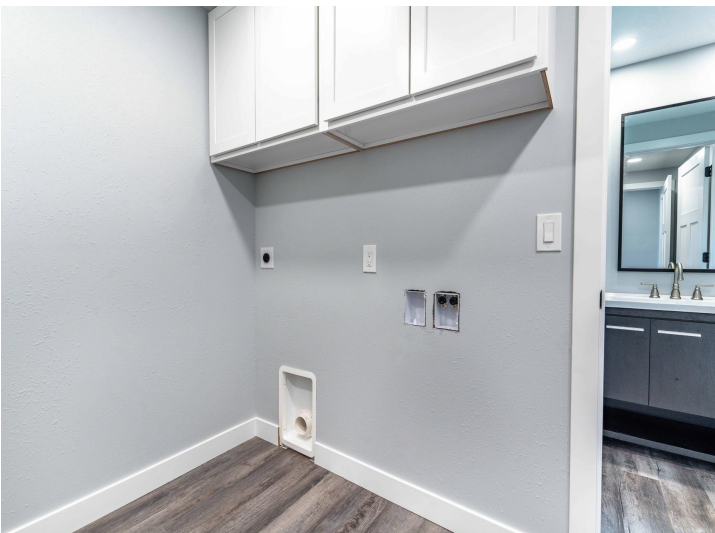
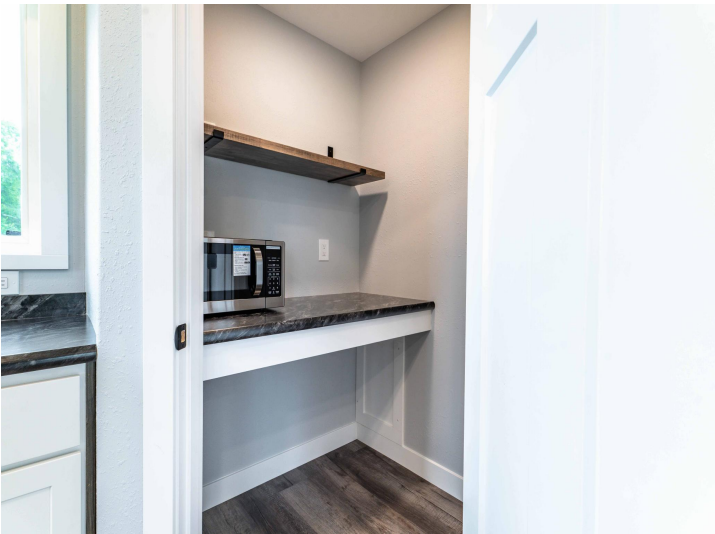
\$399,000
MLS 6747012 Residential
41565 Thunder Road
Clitherall MN 56524



website: www.AffinityRealEstate.com | email: info@affinityrealestate.com | office: 218-237-3333 | fax: 218-237-3377



\$399,000
MLS 6747012 Residential
41565 Thunder Road
Clitherall MN 56524



website: www.AffinityRealEstate.com | email: info@affinityrealestate.com | office: 218-237-3333 | fax: 218-237-3377



\$399,000
MLS 6747012 Residential
41565 Thunder Road
Clitherall MN 56524



website: www.AffinityRealEstate.com | email: info@affinityrealestate.com | office: 218-237-3333 | fax: 218-237-3377



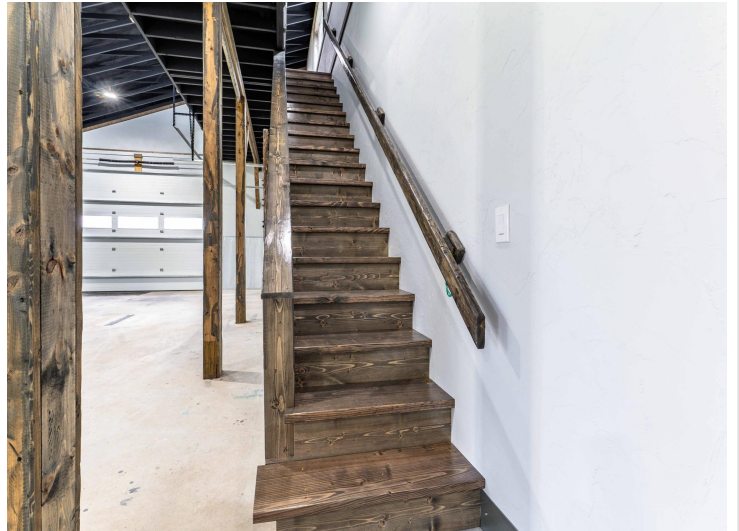
\$399,000
 MLS 6747012 Residential
 41565 Thunder Road
 Clitherall MN 56524



website: www.AffinityRealEstate.com | email: info@affinityrealestate.com | office: 218-237-3333 | fax: 218-237-3377



\$399,000
 MLS 6747012 Residential
 41565 Thunder Road
 Clitherall MN 56524



website: www.AffinityRealEstate.com | email: info@affinityrealestate.com | office: 218-237-3333 | fax: 218-237-3377

Affinity
REAL ESTATE INC

\$399,000
MLS 6747012 Residential
41565 Thunder Road
Clitherall MN 56524



website: www.AffinityRealEstate.com | email: info@affinityrealestate.com | office: 218-237-3333 | fax: 218-237-3377



\$399,000

MLS 6747012 Residential
41565 Thunder Road
Clitherall MN 56524



website: www.AffinityRealEstate.com | email: info@affinityrealestate.com | office: 218-237-3333 | fax: 218-237-3377



\$399,000
 MLS 6747012 Residential
 41565 Thunder Road
 Clitherall MN 56524



website: www.AffinityRealEstate.com | email: info@affinityrealestate.com | office: 218-237-3333 | fax: 218-237-3377



\$399,000
 MLS 6747012 Residential
 41565 Thunder Road
 Clitherall MN 56524



website: www.AffinityRealEstate.com | email: info@affinityrealestate.com | office: 218-237-3333 | fax: 218-237-3377



\$399,000
 MLS 6747012 Residential
 41565 Thunder Road
 Clitherall MN 56524



website: www.AffinityRealEstate.com | email: info@affinityrealestate.com | office: 218-237-3333 | fax: 218-237-3377



\$399,000
 MLS 6747012 Residential
 41565 Thunder Road
 Clitherall MN 56524



website: www.AffinityRealEstate.com | email: info@affinityrealestate.com | office: 218-237-3333 | fax:218-237-3377



\$399,000
MLS 6747012 Residential
41565 Thunder Road
Clitherall MN 56524