



MLS 6747015 Residential

**\$297,000**

1,965 sq ft  
3 bedrooms  
2 baths

1007 Ruby Street  
Alexandria MN 56308

Status: Active

**Description:**

Come to this quaint neighborhood tucked on the edge of Alexandria. This rambler boasts of an open floor plan, lots of natural light, updated flooring in the kitchen & main area and the majority of the windows have been replaced with vinyl windows. If you are looking for a good home, nice yard, great location, with room for personalization this home is it! Seated on a half acre lot, canopied with mature trees, this home is sure to please. Offering a back patio, big yard, two stall garage, main floor laundry and room to personalize with paint, add a back splash, find cute stools or fun furniture. Cozy up and customize your real wood fireplace, that features natural stone accents. The best thing about this home is, the room to make it your own. The sellers updated the main area flooring in 2020, appliances all new in the last 5 years, new dishwasher in Feb of 2025, new concrete driveway in 2024, new garage door opener in 2023, good bones, great location, & nice floor plan, come make this home your own.

**Additional Details:**

Year Built	1976
Lot Acres	0.51
Lot Dimensions	140x160x140x160
Garage Stalls	2
School District	206
Taxes	\$1,686
Taxes with Assessments	\$1,686
Tax Year	2025

**Additional Features:**

**Fuel:** Natural Gas **Heat:** Baseboard, Fireplace(s)

**Driving Directions:**

From downtown Alexandria, go west on Third Ave W. Then take a right onto County Rd 22. After 1.2 miles take a left onto Ruby St NW and the house will be on your left.



Listed By:  
Real Estate by Jo, LLC

Affinity Real Estate Inc. participates in the Regional Multiple Listing Service of Minnesota, Inc Broker Reciprocity (sm) program, allowing us to display other broker's listings on our website. All properties are subject to prior sale, change or withdrawal.



**Call Affinity Real Estate**

**218-237-3333**

**info@affinityrealestate.com**



**Affinity Real Estate - 600 Park Avenue South - Park Rapids MN 56470**



website: [www.AffinityRealEstate.com](http://www.AffinityRealEstate.com) | email: [info@affinityrealestate.com](mailto:info@affinityrealestate.com) | office: 218-237-3333 | fax: 218-237-3377



**\$297,000**  
 MLS 6747015 Residential  
 1007 Ruby Street  
 Alexandria MN 56308



website: [www.AffinityRealEstate.com](http://www.AffinityRealEstate.com) | email: [info@affinityrealestate.com](mailto:info@affinityrealestate.com) | office: 218-237-3333 | fax: 218-237-3377

**Affinity**  
REAL ESTATE INC

**\$297,000**  
MLS 6747015 Residential  
1007 Ruby Street  
Alexandria MN 56308



website: [www.AffinityRealEstate.com](http://www.AffinityRealEstate.com) | email: [info@affinityrealestate.com](mailto:info@affinityrealestate.com) | office: 218-237-3333 | fax: 218-237-3377

**Affinity**  
REAL ESTATE INC

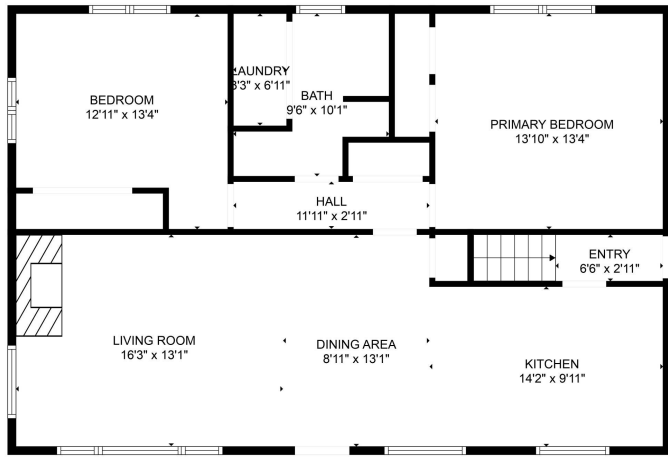
**\$297,000**  
MLS 6747015 Residential  
1007 Ruby Street  
Alexandria MN 56308



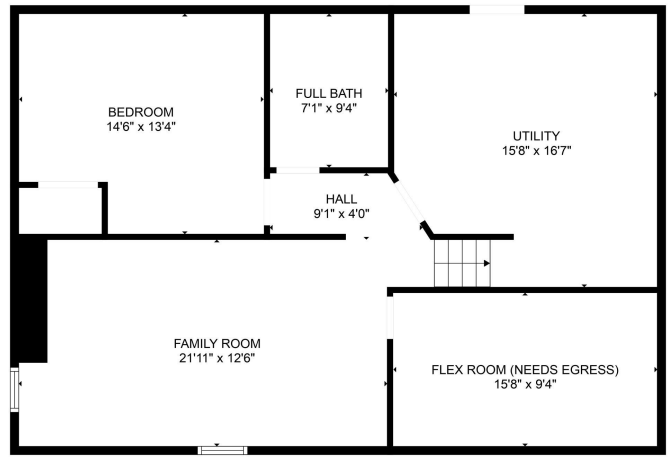
website: [www.AffinityRealEstate.com](http://www.AffinityRealEstate.com) | email: [info@affinityrealestate.com](mailto:info@affinityrealestate.com) | office: 218-237-3333 | fax: 218-237-3377

**Affinity**  
REAL ESTATE INC

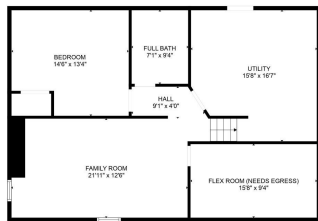
**\$297,000**  
MLS 6747015 Residential  
1007 Ruby Street  
Alexandria MN 56308



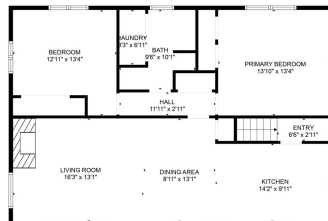
FLOOR PLAN CREATED BY CUBICASA APP. MEASUREMENTS DEEMED HIGHLY RELIABLE BUT NOT GUARANTEED.



FLOOR PLAN CREATED BY CUBICASA APP. MEASUREMENTS DEEMED HIGHLY RELIABLE BUT NOT GUARANTEED.



FLOOR 1



FLOOR 2

FLOOR PLAN CREATED BY CUBICASA APP. MEASUREMENTS DEEMED HIGHLY RELIABLE BUT NOT GUARANTEED.

website: [www.AffinityRealEstate.com](http://www.AffinityRealEstate.com) | email: [info@affinityrealestate.com](mailto:info@affinityrealestate.com) | office: 218-237-3333 | fax: 218-237-3377



**\$297,000**  
 MLS 6747015 Residential  
 1007 Ruby Street  
 Alexandria MN 56308