



MLS 6747044 Lake Land

**\$165,000**



**Description:**

Unlock the potential. This 19.80 acre property on the east side of Fergus Falls offers an exceptional opportunity for development. Located along County Highway 1 on a paved road with bike path access and just minutes from the Hoot Lake public access, this R-1 zoned parcel sits on the shores of an unnamed lake, offering scenic water views and endless possibilities. Whether you're planning a new neighborhood, launching a unique project, or securing land for future use, this is a rare and versatile offering in a desirable location.

**Additional Details:**

Lot Acres	19.8
Lot Dimensions	757 x 1185
School District	544
Taxes	\$1,182
Taxes with Assessments	\$1,182
Tax Year	2025

**Additional Features:**

**Driving Directions:**

E on Fir Ave. Just past Lakeway Market on the S side of E Fir Ave.



Listed By:  
Keller Williams Realty Professionals

Affinity Real Estate Inc. participates in the Regional Multiple Listing Service of Minnesota, Inc Broker Reciprocity (sm) program, allowing us to display other broker's listings on our website. All properties are subject to prior sale, change or withdrawal.



**Call Affinity Real Estate**

**218-237-3333**

**[info@affinityrealestate.com](mailto:info@affinityrealestate.com)**



**Affinity Real Estate - 600 Park Avenue South - Park Rapids MN 56470**



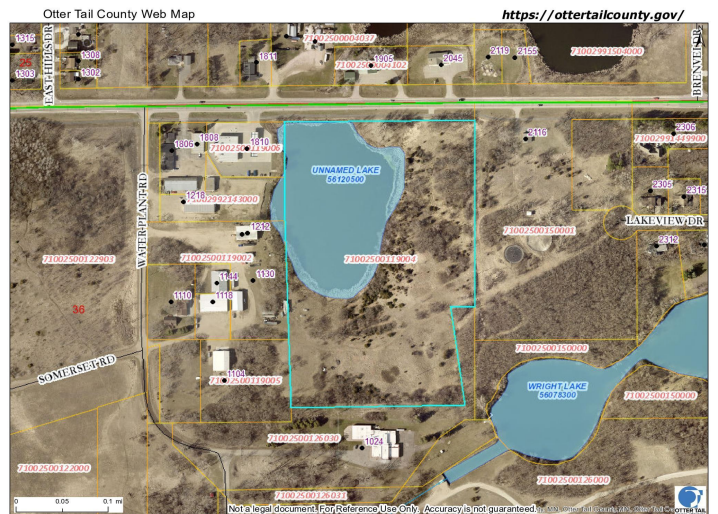


website: [www.AffinityRealEstate.com](http://www.AffinityRealEstate.com) | email: [info@affinityrealestate.com](mailto:info@affinityrealestate.com) | office: 218-237-3333 | fax: 218-237-3377



**\$165,000**  
 MLS 6747044 Lake Land  
 20XX Fir Avenue  
 Fergus Falls MN 56537





website: [www.AffinityRealEstate.com](http://www.AffinityRealEstate.com) | email: [info@affinityrealestate.com](mailto:info@affinityrealestate.com) | office: 218-237-3333 | fax: 218-237-3377



**\$165,000**  
 MLS 6747044 Lake Land  
 20XX Fir Avenue  
 Fergus Falls MN 56537