



MLS 6747095 Residential

\$124,900

1,600 sq ft
3 bedrooms
2 baths

209 Pacific Avenue
Randall MN 56475

Status: Coming Soon

Description:

This very affordable owner occupied 3-bed 2-bath home is situated on a conveniently located .13 acre lot. The home has a new hot water boiler. There's 3 beds on one level. Lots of character. This home is being sold AS-IS. Schedule your showing today! *Cash or conventional offers only please**

Additional Details:

Year Built	1871
Lot Acres	0.13
Lot Dimensions	50x115
School District	482
Taxes	\$906
Taxes with Assessments	\$906
Tax Year	2025

Additional Features:

Basement: Partial **Fuel:** Electric, Natural Gas **Heat:** Hot Water **Sewer:** City Sewer/Connected **Water:** City Water/Connected **Air Conditioning:** None

Driving Directions:

From HWY 10, Right on 1st St in Randall, Right on Pacific Ave to home on Left.



Listed By:
Premier Real Estate Services

Affinity Real Estate Inc. participates in the Regional Multiple Listing Service of Minnesota, Inc Broker Reciprocity (sm) program, allowing us to display other broker's listings on our website. All properties are subject to prior sale, change or withdrawal.



Call Affinity Real Estate

218-237-3333

info@affinityrealestate.com



Affinity Real Estate - 600 Park Avenue South - Park Rapids MN 56470



website: www.AffinityRealEstate.com | email: info@affinityrealestate.com | office: 218-237-3333 | fax: 218-237-3377

Affinity
REAL ESTATE INC

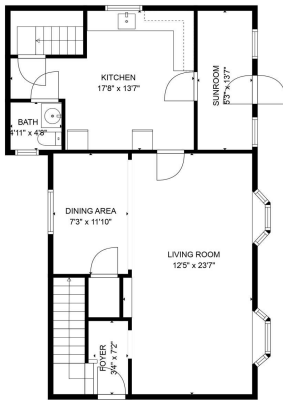
\$124,900
MLS 6747095 Residential
209 Pacific Avenue
Randall MN 56475



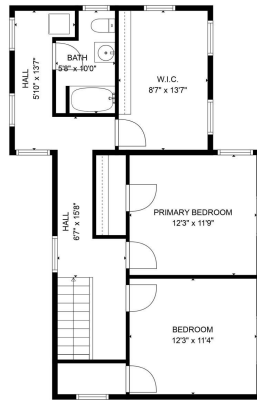
website: www.AffinityRealEstate.com | email: info@affinityrealestate.com | office: 218-237-3333 | fax: 218-237-3377

Affinity
REAL ESTATE INC

\$124,900
MLS 6747095 Residential
209 Pacific Avenue
Randall MN 56475

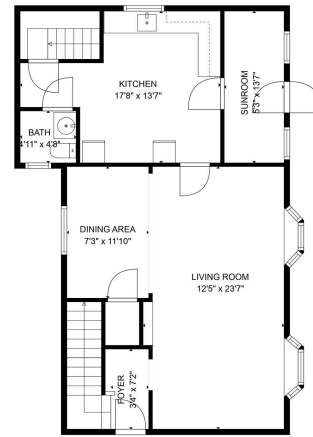


FLOOR 1

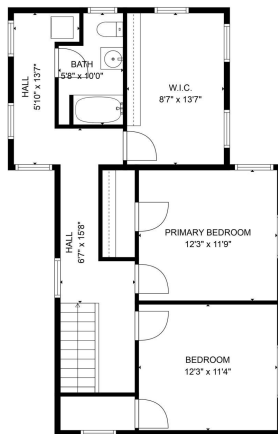


FLOOR 2

TOTAL: 1493 sq. ft.
FLOOR 1: 795 sq. ft., FLOOR 2: 708 sq. ft.
SIZES AND DIMENSIONS ARE APPROXIMATE, ACTUAL MAY VARY



TOTAL: 1493 sq. ft.
FLOOR 1: 795 sq. ft., FLOOR 2: 708 sq. ft.
SIZES AND DIMENSIONS ARE APPROXIMATE, ACTUAL MAY VARY



TOTAL: 1493 sq. ft.
FLOOR 1: 795 sq. ft., FLOOR 2: 708 sq. ft.
SIZES AND DIMENSIONS ARE APPROXIMATE, ACTUAL MAY VARY

website: www.AffinityRealEstate.com | email: info@affinityrealestate.com | office: 218-237-3333 | fax: 218-237-3377



\$124,900
MLS 6747095 Residential
209 Pacific Avenue
Randall MN 56475