



MLS 6747192 Residential

\$724,900

3,390 sq ft
3 bedrooms
3 baths

1054 Shore Drive
Detroit Lakes MN 56501

Status: Active

Description:

Welcome to your dream home! This stunning classic brick residence perfectly blends timeless elegance and modern comforts, tucked away on an expansive acre-plus lot that offers privacy without sacrificing the convenience of city living.

Step inside to discover a fully updated interior, where newer windows allow natural light to flood throughout the spacious layout. The main floor features an inviting open concept that includes a well-appointed kitchen, a cozy dining area, and a convenient laundry space, making everyday living a breeze. On the main level you will also find three bedrooms, two bathrooms, and a delightful sunroom - perfect for soaking in the sun's warmth or enjoying your morning coffee with a view.


The lower level offers even more space to unwind, featuring an oversized living area that's ideal for movie nights. The lower level also features a large bathroom and storage space. With an optional two additional bedrooms (if added egress windows), there's potential for more sleeping space or a home office. Step outside through the walk-out basement sunroom to enjoy your serene backyard, ideal for entertaining or simply relaxing in nature.

The two-stall attached garage provides ample storage for your vehicles and outdoor equipment.

Don't miss out on this exceptional home where classic charm meets modern living! Call today to schedule your private tour and experience everything this extraordinary property has to offer!

Additional Details:

Year Built	1948
Lot Acres	1.6
Lot Dimensions	Irregular
Garage Stalls	2
School District	22
Taxes	\$3,414
Taxes with Assessments	\$3,494
Tax Year	2025



Listed By:
Beyond Realty

Basement: Block, Finished, Walkout **Fuel:** Natural Gas, **Garage:** 2 **Heat:** Forced Air, Oil
Air Conditioning: Central Air

Service of Minnesota, Inc Broker Reciprocity (sm) program, allowing us to display other broker's listings on our website. All properties are subject to prior sale, change or withdrawal.



Call Affinity Real Estate

218-237-3333

info@affinityrealestate.com



Affinity Real Estate - 600 Park Avenue South - Park Rapids MN 56470



website: www.AffinityRealEstate.com | email: info@affinityrealestate.com | office: 218-237-3333 | fax: 218-237-3377

Affinity
REAL ESTATE INC

\$724,900
MLS 6747192 Residential
1054 Shore Drive
Detroit Lakes MN 56501



website: www.AffinityRealEstate.com | email: info@affinityrealestate.com | office: 218-237-3333 | fax: 218-237-3377

Affinity
REAL ESTATE INC

\$724,900
MLS 6747192 Residential
1054 Shore Drive
Detroit Lakes MN 56501



website: www.AffinityRealEstate.com | email: info@affinityrealestate.com | office: 218-237-3333 | fax: 218-237-3377

Affinity
REAL ESTATE INC

\$724,900
MLS 6747192 Residential
1054 Shore Drive
Detroit Lakes MN 56501



website: www.AffinityRealEstate.com | email: info@affinityrealestate.com | office: 218-237-3333 | fax: 218-237-3377

Affinity
REAL ESTATE INC

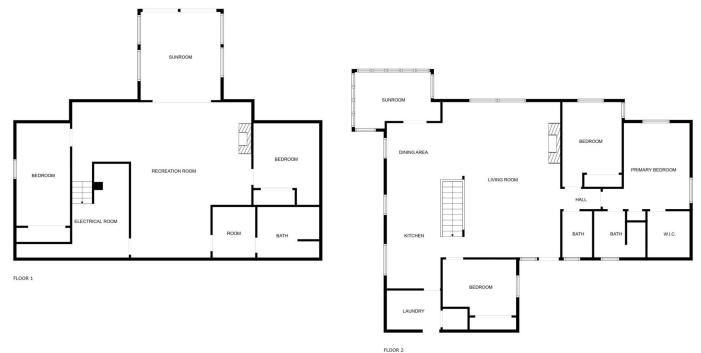
\$724,900
MLS 6747192 Residential
1054 Shore Drive
Detroit Lakes MN 56501



website: www.AffinityRealEstate.com | email: info@affinityrealestate.com | office: 218-237-3333 | fax: 218-237-3377



\$724,900
MLS 6747192 Residential
1054 Shore Drive
Detroit Lakes MN 56501



FLOOR PLAN CREATED BY CURBSCAPE APP. MEASUREMENTS DEEMED HIGHLY RELIABLE BUT NOT GUARANTEED.



website: www.AffinityRealEstate.com | email: info@affinityrealestate.com | office: 218-237-3333 | fax: 218-237-3377



\$724,900
 MLS 6747192 Residential
 1054 Shore Drive
 Detroit Lakes MN 56501



website: www.AffinityRealEstate.com | email: info@affinityrealestate.com | office: 218-237-3333 | fax: 218-237-3377

Affinity
REAL ESTATE INC

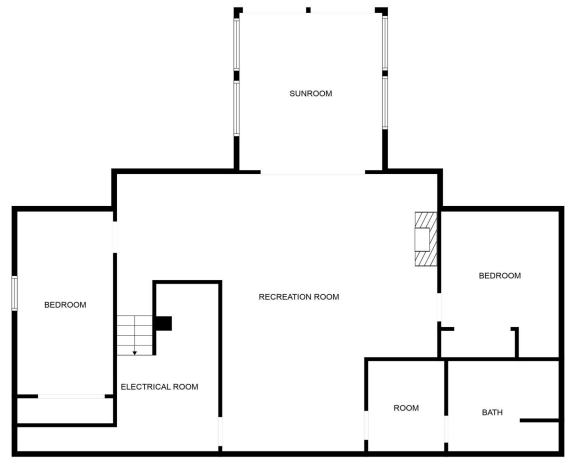
\$724,900
MLS 6747192 Residential
1054 Shore Drive
Detroit Lakes MN 56501



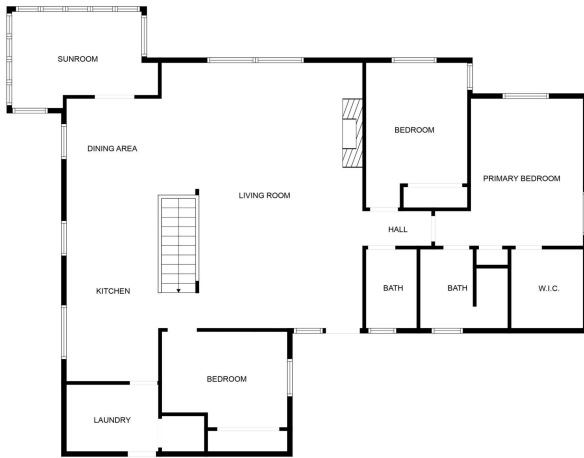
website: www.AffinityRealEstate.com | email: info@affinityrealestate.com | office: 218-237-3333 | fax: 218-237-3377



\$724,900
 MLS 6747192 Residential
 1054 Shore Drive
 Detroit Lakes MN 56501



FLOOR PLAN CREATED BY CUBICASA APP. MEASUREMENTS DEEMED HIGHLY RELIABLE BUT NOT GUARANTEED.



FLOOR PLAN CREATED BY CUBICASA APP. MEASUREMENTS DEEMED HIGHLY RELIABLE BUT NOT GUARANTEED.

website: www.AffinityRealEstate.com | email: info@affinityrealestate.com | office: 218-237-3333 | fax: 218-237-3377

Affinity
REAL ESTATE INC

\$724,900
MLS 6747192 Residential
1054 Shore Drive
Detroit Lakes MN 56501