



MLS 6747258 Land

\$18,500

0.42 Acres

Raw Land

TBD 8th Street NE

Staples MN 56479

Status: Active



Description:

Here's your opportunity to own an affordable, buildable city lot in the heart of Staples! This spacious .42-acre parcel offers 100 feet of frontage along a paved, city-maintained street with curb and gutter. Ideally located on 8th St NE, just minutes from Hwy 10, schools, shopping, and parks, this lot is perfectly suited for your new home.

Additional Details:

Lot Acres	0.42
Lot Dimensions	100x183x112x185
School District	2170
Taxes	\$210
Taxes with Assessments	\$210
Tax Year	2025

Additional Features:

Driving Directions:

From 10 heading West take 2nd AVE NE to 8th Street NE, See sign.



Listed By:
LPT Realty, LLC

Affinity Real Estate Inc. participates in the Regional Multiple Listing Service of Minnesota, Inc Broker Reciprocity (sm) program, allowing us to display other broker's listings on our website. All properties are subject to prior sale, change or withdrawal.



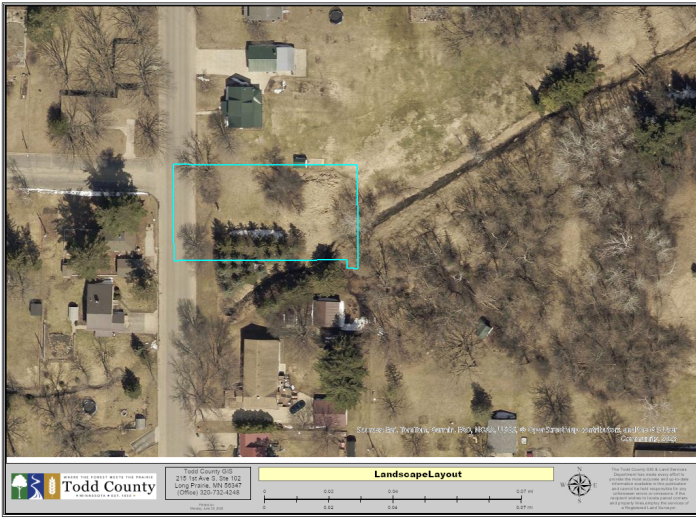
Call Affinity Real Estate

218-237-3333

info@affinityrealestate.com



Affinity Real Estate - 600 Park Avenue South - Park Rapids MN 56470



website: www.AffinityRealEstate.com | email: info@affinityrealestate.com | office: 218-237-3333 | fax:218-237-3377



\$18,500
MLS 6747258 Land
TBD 8th Street NE
Staples MN 56479