



MLS 6747430 Land

**\$248,800**

24.88 Acres  
Raw Land

3xxxx Co Hwy 67  
New York Mills MN 56567

Status: Pending

**Description:**

24.88 Acres of Potential Just Minutes from Town!

This scenic 24.88 acre parcel offers the perfect blend of peace, nature, convenience and potential. Currently with 20.67 enrolled in CRP, the land provides annual payments of \$2,499 while being beautifully covered in wildflowers and native grasses. Whether you're looking to invest in future home plans, develop a new project, or simply enjoy the open space, this property is a smart move. Conveniently located close to town, it offers easy access without sacrificing privacy or natural beauty.

**Additional Details:**

Lot Acres	24.88
Lot Dimensions	24.1
School District	553
Taxes	\$500
Taxes with Assessments	(unreported)
Tax Year	2024

**Additional Features:**

**Driving Directions:**

North of New York Mills on Highway 67



Listed By:  
Centennial Realty

Affinity Real Estate Inc. participates in the Regional Multiple Listing Service of Minnesota, Inc Broker Reciprocity (sm) program, allowing us to display other broker's listings on our website. All properties are subject to prior sale, change or withdrawal.



**Call Affinity Real Estate**

**218-237-3333**

**info@affinityrealestate.com**



**Affinity Real Estate - 600 Park Avenue South - Park Rapids MN 56470**





website: [www.AffinityRealEstate.com](http://www.AffinityRealEstate.com) | email: [info@affinityrealestate.com](mailto:info@affinityrealestate.com) | office: 218-237-3333 | fax: 218-237-3377



**\$248,800**  
 MLS 6747430 Land  
 3xxxx Co Hwy 67  
 New York Mills MN 56567



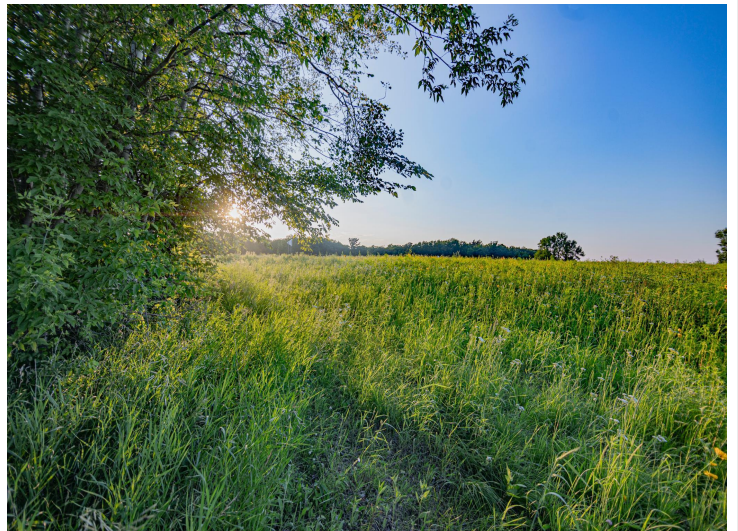


website: [www.AffinityRealEstate.com](http://www.AffinityRealEstate.com) | email: [info@affinityrealestate.com](mailto:info@affinityrealestate.com) | office: 218-237-3333 | fax: 218-237-3377



**\$248,800**  
 MLS 6747430 Land  
 3xxxx Co Hwy 67  
 New York Mills MN 56567





website: [www.AffinityRealEstate.com](http://www.AffinityRealEstate.com) | email: [info@affinityrealestate.com](mailto:info@affinityrealestate.com) | office: 218-237-3333 | fax: 218-237-3377



**\$248,800**  
MLS 6747430 Land  
3xxxx Co Hwy 67  
New York Mills MN 56567





website: [www.AffinityRealEstate.com](http://www.AffinityRealEstate.com) | email: [info@affinityrealestate.com](mailto:info@affinityrealestate.com) | office: 218-237-3333 | fax: 218-237-3377



**\$248,800**  
MLS 6747430 Land  
3xxxx Co Hwy 67  
New York Mills MN 56567