



MLS 6747701 Lake Home

\$517,000

2,634 sq ft
3 bedrooms
3 baths

32468 County Highway 27
Erhard MN 56534

Waterfront: Long Lake (56078400)

Status: Active

Description:

Long Lake - 400 ft Lake Frontage 5.42 acres 2 parcels. This Rambler style lake home has 3 BD 3 BA, both levels finished with a basement walkout that leads to a paver patio. Main floor has 3 patio doors leading to the lakeside deck and many windows offering plenty of natural lighting. Property does have a steep bank to the waters edge but is equipped with an electric tram to ride up and down to the lake. Perfect level sitting area at the bottom to enjoy any lake activities. This home has spectacular panoramic views from the lakeside deck and patio. From the entrance of the driveway is the additional 30 x 40 insulated and heated detached garage/shop and another multi-room shed that is large enough to store a motorhome, pontoon, boat and likely much more. This year round Lake Home is well equipped for all lake home enthusiasts.

Additional Details:

Year Built	1995
Lot Acres	5.42
Lot Dimensions	1 x 1 x 1 x 1
Garage Stalls	2
School District	544
Taxes	\$5,732
Taxes with Assessments	\$5,732
Tax Year	2025

Additional Features:

Basement: Daylight/Lookout Windows, Finished, Full, Walkout, Wood **Fuel:** Propane **Garage:** 2 **Heat:** Forced Air, Fireplace(s) **Sewer:** Septic System Compliant - No **Water:** Well **Air Conditioning:** Central Air

Driving Directions:

Hwy 59 from Fergus Falls or Detroit Lakes, turn East onto Reed Creek RD, to left onto Hwy 27 to address 32468 sign



Listed By:
ERA Viking Realty

Affinity Real Estate Inc. participates in the Regional Multiple Listing Service of Minnesota, Inc Broker Reciprocity (sm) program, allowing us to display other broker's listings on our website. All properties are subject to prior sale, change or withdrawal.



Call Affinity Real Estate

218-237-3333

info@affinityrealestate.com



Affinity Real Estate - 600 Park Avenue South - Park Rapids MN 56470



website: www.AffinityRealEstate.com | email: info@affinityrealestate.com | office: 218-237-3333 | fax: 218-237-3377



\$517,000
MLS 6747701 Lake Home
32468 County Highway 27
Erhard MN 56534



website: www.AffinityRealEstate.com | email: info@affinityrealestate.com | office: 218-237-3333 | fax: 218-237-3377

Affinity
REAL ESTATE INC

\$517,000
MLS 6747701 Lake Home
32468 County Highway 27
Erhard MN 56534



website: www.AffinityRealEstate.com | email: info@affinityrealestate.com | office: 218-237-3333 | fax: 218-237-3377



\$517,000
 MLS 6747701 Lake Home
 32468 County Highway 27
 Erhard MN 56534



website: www.AffinityRealEstate.com | email: info@affinityrealestate.com | office: 218-237-3333 | fax: 218-237-3377

Affinity
REAL ESTATE INC

\$517,000

MLS 6747701 Lake Home
32468 County Highway 27
Erhard MN 56534



website: www.AffinityRealEstate.com | email: info@affinityrealestate.com | office: 218-237-3333 | fax: 218-237-3377



\$517,000
MLS 6747701 Lake Home
32468 County Highway 27
Erhard MN 56534



website: www.AffinityRealEstate.com | email: info@affinityrealestate.com | office: 218-237-3333 | fax: 218-237-3377



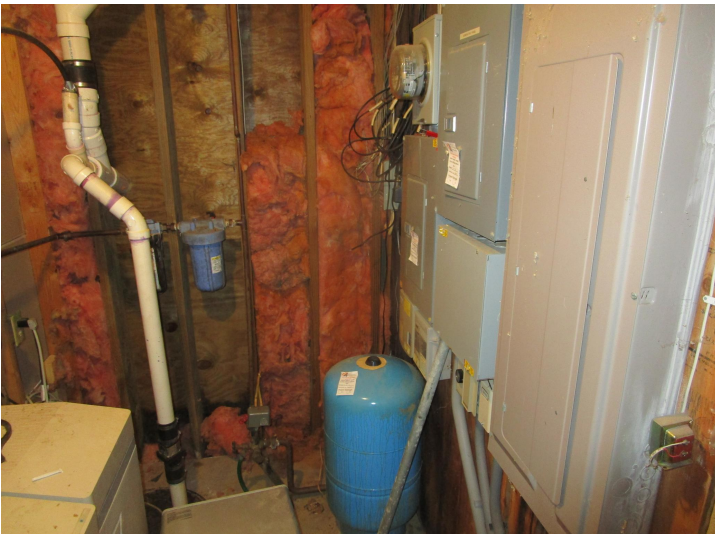
\$517,000
 MLS 6747701 Lake Home
 32468 County Highway 27
 Erhard MN 56534



website: www.AffinityRealEstate.com | email: info@affinityrealestate.com | office: 218-237-3333 | fax: 218-237-3377



\$517,000
 MLS 6747701 Lake Home
 32468 County Highway 27
 Erhard MN 56534



website: www.AffinityRealEstate.com | email: info@affinityrealestate.com | office: 218-237-3333 | fax: 218-237-3377



\$517,000
 MLS 6747701 Lake Home
 32468 County Highway 27
 Erhard MN 56534



website: www.AffinityRealEstate.com | email: info@affinityrealestate.com | office: 218-237-3333 | fax: 218-237-3377



\$517,000
 MLS 6747701 Lake Home
 32468 County Highway 27
 Erhard MN 56534



website: www.AffinityRealEstate.com | email: info@affinityrealestate.com | office: 218-237-3333 | fax: 218-237-3377



\$517,000
 MLS 6747701 Lake Home
 32468 County Highway 27
 Erhard MN 56534



website: www.AffinityRealEstate.com | email: info@affinityrealestate.com | office: 218-237-3333 | fax:218-237-3377



\$517,000

MLS 6747701 Lake Home
32468 County Highway 27
Erhard MN 56534