



MLS 6747743 Residential

\$399,900

2,648 sq ft
4 bedrooms
2 baths

119 Tyler Avenue
Bemidji MN 56601

Status: Active

Description:

This beautifully updated home features 4+ bedrooms, 2 bathrooms, and sits on a picturesque corner lot with mature trees. Enjoy a large kitchen with new stainless steel appliances, remodeled lower-level bath, and new carpet downstairs. Relax in the private sauna or on the expansive, maintenance-free deck overlooking the backyard. Includes both a double attached garage and a 24x48 4-stall detached garage for all your storage needs. Bright, open spaces and large bedrooms complete this must-see home!

Additional Details:

Year Built	1979
Lot Acres	2.03
Lot Dimensions	308x285
Garage Stalls	6
School District	31
Taxes	\$3,278
Taxes with Assessments	\$3,464
Tax Year	2025

Additional Features:

Basement: Block **Fuel:** Electric, Propane **Garage:** 6 **Heat:** Baseboard, Forced Air **Sewer:** Private Sewer **Water:** Private **Air Conditioning:** Central Air

Driving Directions:

East on Roosevelt Rd to Left on Tyler Ave to property on left, or East on Power dam Rd to Tyler Ave, Right on Tyler Ave follow to property on right.



Listed By:
218 Real Estate

Affinity Real Estate Inc. participates in the Regional Multiple Listing Service of Minnesota, Inc Broker Reciprocity (sm) program, allowing us to display other broker's listings on our website. All properties are subject to prior sale, change or withdrawal.



Call Affinity Real Estate

218-237-3333

info@affinityrealestate.com



Affinity Real Estate - 600 Park Avenue South - Park Rapids MN 56470



website: www.AffinityRealEstate.com | email: info@affinityrealestate.com | office: 218-237-3333 | fax: 218-237-3377

Affinity
REAL ESTATE INC

\$399,900
MLS 6747743 Residential
119 Tyler Avenue
Bemidji MN 56601



website: www.AffinityRealEstate.com | email: info@affinityrealestate.com | office: 218-237-3333 | fax: 218-237-3377

Affinity
REAL ESTATE INC

\$399,900
MLS 6747743 Residential
119 Tyler Avenue
Bemidji MN 56601



website: www.AffinityRealEstate.com | email: info@affinityrealestate.com | office: 218-237-3333 | fax: 218-237-3377

Affinity
REAL ESTATE INC

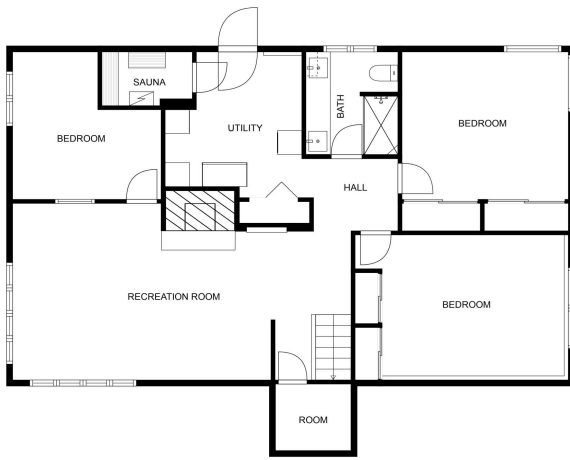
\$399,900
MLS 6747743 Residential
119 Tyler Avenue
Bemidji MN 56601



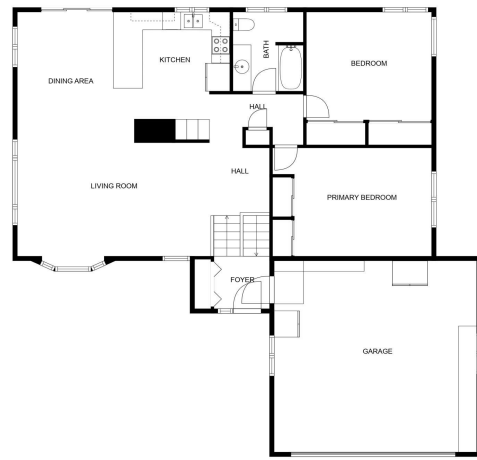
website: www.AffinityRealEstate.com | email: info@affinityrealestate.com | office: 218-237-3333 | fax: 218-237-3377



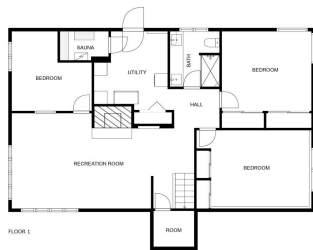
\$399,900
MLS 6747743 Residential
119 Tyler Avenue
Bemidji MN 56601



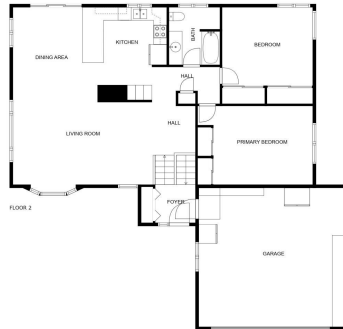
FLOOR PLAN CREATED BY CUBICASA APP. MEASUREMENTS DEEMED HIGHLY RELIABLE BUT NOT GUARANTEED.



FLOOR PLAN CREATED BY CUBICASA APP. MEASUREMENTS DEEMED HIGHLY RELIABLE BUT NOT GUARANTEED.



FLOOR 1



FLOOR 2

FLOOR PLAN CREATED BY CUBICASA APP. MEASUREMENTS DEEMED HIGHLY RELIABLE BUT NOT GUARANTEED.

website: www.AffinityRealEstate.com | email: info@affinityrealestate.com | office: 218-237-3333 | fax: 218-237-3377



\$399,900
MLS 6747743 Residential
119 Tyler Avenue
Bemidji MN 56601