



MLS 6747888 Lake Home

\$499,000

998 sq ft
1 bedrooms
2 baths

37418 County Road 19
Deer River MN 56636

Waterfront: Deer Lake (31071900)

Status: Active

Description:

Two Lakes, Endless Possibilities

This unique property offers 25 acres of private wooded land with access to two lakes. Nestled along the quiet shoreline of Doam Lake, a charming log home sits tucked in nature—perfect for peaceful kayaking, canoeing, and watching wildlife. Just across the road, enjoy access to the crystal-clear waters of Deer Lake, one of the area's most sought-after destinations for boating, swimming, and walleye fishing. A long private tar driveway off Co Rd 19 leads you into this peaceful Up North retreat. You'll also find a heated garage, a pole building, and a Morton building—plenty of space for all your gear, toys, and storage needs. Whether you're seeking a quiet getaway or a full lake life setup, this property delivers space, privacy, and versatility.

Additional Details:

Year Built	1978
Lot Acres	28.19
Lot Dimensions	1800x1000
Garage Stalls	7
School District	318
Taxes	\$2,407
Taxes with Assessments	\$2,482
Tax Year	2025

Additional Features:

Basement: Walkout **Fuel:** Propane **Garage:** 7 **Heat:** Forced Air **Sewer:** Private Sewer **Water:** Well **Air Conditioning:** None

Driving Directions:

hwy 38 to Co Rd 19



Listed By:
EDGE OF THE WILDERNESS REALTY

Affinity Real Estate Inc. participates in the Regional Multiple Listing Service of Minnesota, Inc Broker Reciprocity (sm) program, allowing us to display other broker's listings on our website. All properties are subject to prior sale, change or withdrawal.



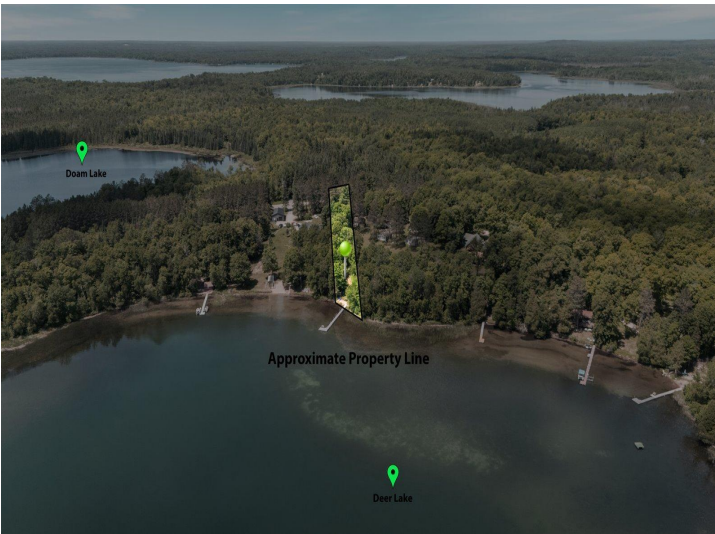
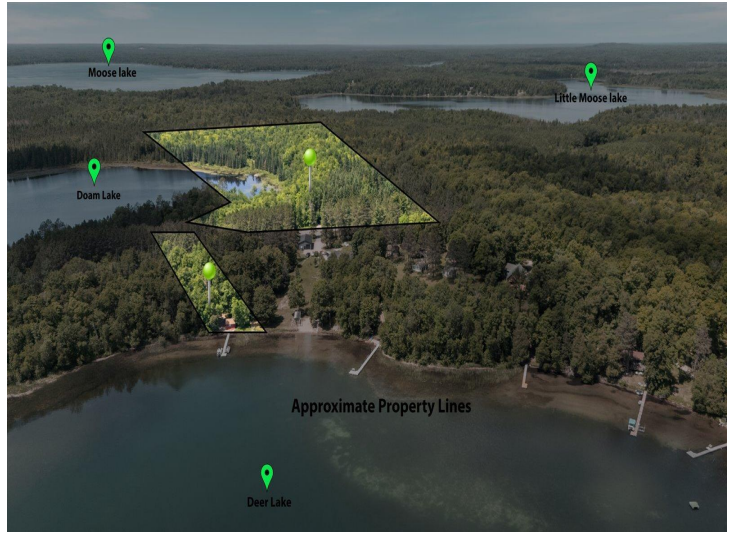
Call Affinity Real Estate

218-237-3333

info@affinityrealestate.com



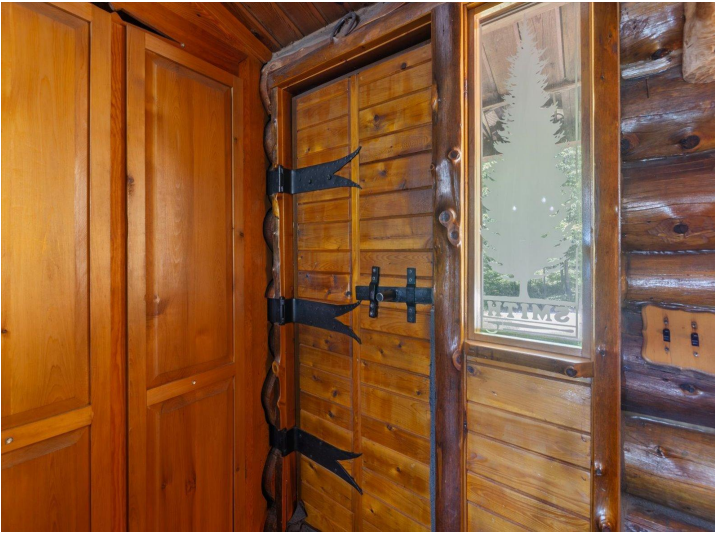
Affinity Real Estate - 600 Park Avenue South - Park Rapids MN 56470



website: www.AffinityRealEstate.com | email: info@affinityrealestate.com | office: 218-237-3333 | fax: 218-237-3377



\$499,000
 MLS 6747888 Lake Home
 37418 County Road 19
 Deer River MN 56636



website: www.AffinityRealEstate.com | email: info@affinityrealestate.com | office: 218-237-3333 | fax: 218-237-3377

Affinity
REAL ESTATE INC

\$499,000
MLS 6747888 Lake Home
37418 County Road 19
Deer River MN 56636



website: www.AffinityRealEstate.com | email: info@affinityrealestate.com | office: 218-237-3333 | fax: 218-237-3377

Affinity
REAL ESTATE INC

\$499,000
MLS 6747888 Lake Home
37418 County Road 19
Deer River MN 56636



website: www.AffinityRealEstate.com | email: info@affinityrealestate.com | office: 218-237-3333 | fax: 218-237-3377



\$499,000
MLS 6747888 Lake Home
37418 County Road 19
Deer River MN 56636



website: www.AffinityRealEstate.com | email: info@affinityrealestate.com | office: 218-237-3333 | fax: 218-237-3377



\$499,000
 MLS 6747888 Lake Home
 37418 County Road 19
 Deer River MN 56636



website: www.AffinityRealEstate.com | email: info@affinityrealestate.com | office: 218-237-3333 | fax: 218-237-3377



\$499,000
 MLS 6747888 Lake Home
 37418 County Road 19
 Deer River MN 56636



website: www.AffinityRealEstate.com | email: info@affinityrealestate.com | office: 218-237-3333 | fax: 218-237-3377



\$499,000
 MLS 6747888 Lake Home
 37418 County Road 19
 Deer River MN 56636



website: www.AffinityRealEstate.com | email: info@affinityrealestate.com | office: 218-237-3333 | fax: 218-237-3377



\$499,000

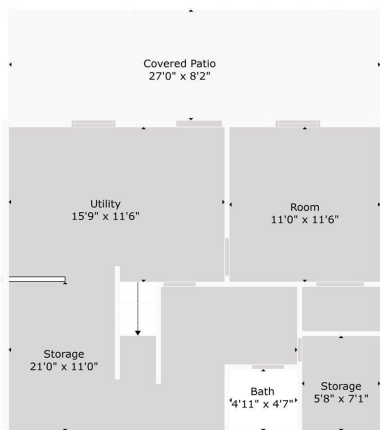
MLS 6747888 Lake Home
37418 County Road 19
Deer River MN 56636



website: www.AffinityRealEstate.com | email: info@affinityrealestate.com | office: 218-237-3333 | fax: 218-237-3377

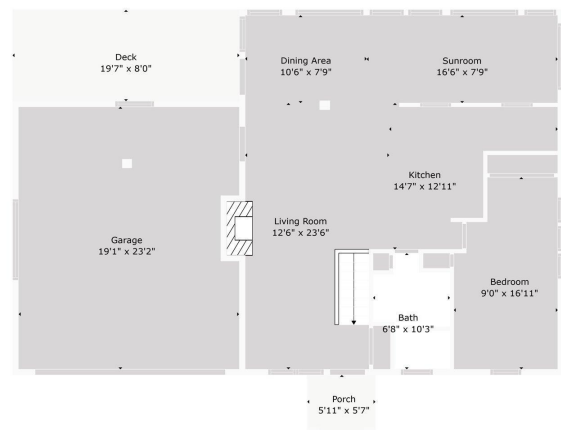


\$499,000
 MLS 6747888 Lake Home
 37418 County Road 19
 Deer River MN 56636



TOTAL: 979 sq. ft.
 BELOW GROUND: 133 sq. ft. FLOOR 2: 846 sq. ft.
 EXCLUDED AREAS: STORAGE: 253 sq. ft. TOILET: 23 sq. ft. UNDEFINED: 19 sq. ft.
 COVERED PATIO: 221 sq. ft. UTILITY: 180 sq. ft. GARAGE: 433 sq. ft.
 DECK: 158 sq. ft. PORCH: 33 sq. ft. FIREPLACE: 9 sq. ft.
 WALLS: 140 sq. ft.

Floor Plan Created By Cubicool App. Measurements Deemed Highly Reliable But Not Guaranteed.



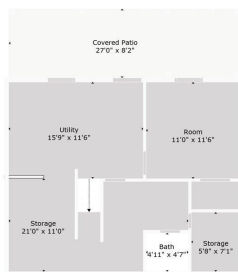
TOTAL: 979 sq. ft.
 BELOW GROUND: 133 sq. ft. FLOOR 2: 846 sq. ft.
 EXCLUDED AREAS: STORAGE: 253 sq. ft. TOILET: 23 sq. ft. UNDEFINED: 19 sq. ft.
 COVERED PATIO: 221 sq. ft. UTILITY: 180 sq. ft. GARAGE: 433 sq. ft.
 DECK: 158 sq. ft. PORCH: 33 sq. ft. FIREPLACE: 9 sq. ft.
 WALLS: 140 sq. ft.

Floor Plan Created By Cubicool App. Measurements Deemed Highly Reliable But Not Guaranteed.

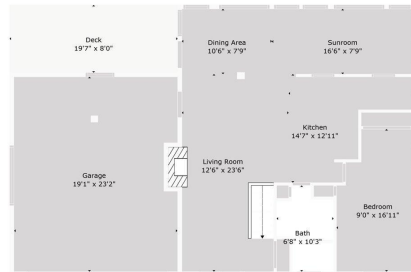
website: www.AffinityRealEstate.com | email: info@affinityrealestate.com | office: 218-237-3333 | fax: 218-237-3377



\$499,000
 MLS 6747888 Lake Home
 37418 County Road 19
 Deer River MN 56636



Floor 1



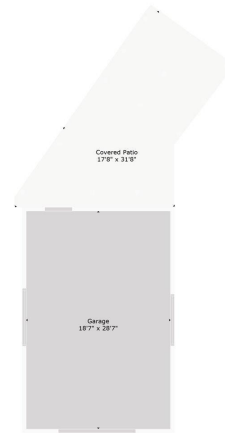
Floor 2

Porch
9'11" x 9'7"

TOTAL: 979 sq. ft.

BELOW GROUND: 133 sq. ft. FLOOR 2: 846 sq. ft.
EXCLUDED AREAS: STORAGE: 253 sq. ft. TOILET: 23 sq. ft. UNDEFINED: 19 sq. ft.
COVERED PATIO: 221 sq. ft. UTILITY: 180 sq. ft. GARAGE: 433 sq. ft.
DECK: 158 sq. ft. PORCH: 33 sq. ft. FIREPLACE: 9 sq. ft.
WALLS: 140 sq. ft.

Floor Plan Created By Cubicool App. Measurements Deemed Highly Reliable But Not Guaranteed.



TOTAL: 0 sq. ft.

FLOOR 1: 0 sq. ft.
EXCLUDED AREAS: GARAGE: 532 sq. ft. COVERED PATIO: 386 sq. ft.
WALLS: 48 sq. ft.

Floor Plan Created By Cubicool App. Measurements Deemed Highly Reliable But Not Guaranteed.



TOTAL: 0 sq. ft.

FLOOR 1: 0 sq. ft.
EXCLUDED AREAS: GARAGE: 1218 sq. ft.
WALLS: 77 sq. ft.

Floor Plan Created By Cubicool App. Measurements Deemed Highly Reliable But Not Guaranteed.

website: www.AffinityRealEstate.com | email: info@affinityrealestate.com | office: 218-237-3333 | fax: 218-237-3377



\$499,000
MLS 6747888 Lake Home
37418 County Road 19
Deer River MN 56636