



MLS 6748277 Land

\$59,900

4.8 Acres
Raw Land

TBD Lot 5 Destination Drive
Nevis MN 56467

Status: Pending

Description:

This Nevis country lot features over 4.8 acres of scenic privacy. Just minutes away from Downtown Nevis, the Heartland Trail and Paul Bunyan State Forest, this would be ideal location to build your dream home. Call for an appointment today.

Additional Details:

Lot Acres	4.8
Lot Dimensions	354x393x450x354x352x312
School District	308
Taxes	\$66
Taxes with Assessments	\$66
Tax Year	2025

Additional Features:

Driving Directions:

From Nevis Highway 34/County 13. Head South on County 13 to Destination Drive. Then head West on Destination Drive to property on right, Lot 5.



Listed By:
Wolff & Simon Real Estate

Affinity Real Estate Inc. participates in the Regional Multiple Listing Service of Minnesota, Inc Broker Reciprocity (sm) program, allowing us to display other broker's listings on our website. All properties are subject to prior sale, change or withdrawal.



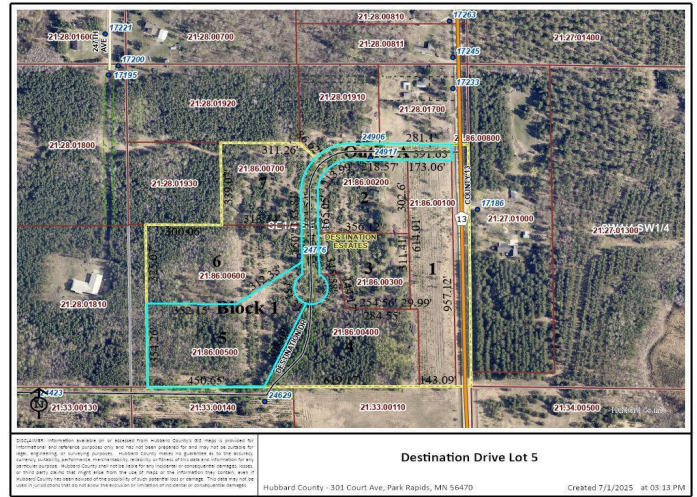
Call Affinity Real Estate

218-237-3333

info@affinityrealestate.com



Affinity Real Estate - 600 Park Avenue South - Park Rapids MN 56470



website: www.AffinityRealEstate.com | email: info@affinityrealestate.com | office: 218-237-3333 | fax: 218-237-3377



\$59,900
 MLS 6748277 Land
 TBD Lot 5 Destination Drive
 Nevis MN 56467



website: www.AffinityRealEstate.com | email: info@affinityrealestate.com | office: 218-237-3333 | fax: 218-237-3377



\$59,900
 MLS 6748277 Land
 TBD Lot 5 Destination Drive
 Nevis MN 56467