



MLS 6748300 Land

\$55,000

2 Acres
Raw Land

TBD County Road 15
Jenkins MN 56456

Status: Active

Description:

Gorgeous 2-acre lot in a prime location, perfectly situated near scenic lakes, recreational trails, championship golf courses, fantastic restaurants, unique shops, and all the sought-after amenities of the Brainerd Lakes Area! Great spot for a barndominium or shouse!

Additional Details:

Lot Acres	2
Lot Dimensions	200x438x200x438
School District	186
Taxes	\$102
Taxes with Assessments	\$102
Tax Year	2025

Additional Features:

Driving Directions:

From Pequot Lakes, north on #371, turn right on #15 to sign on the property just past the curve after White Pine Knoll on the right.



Listed By:
Real Broker, LLC

Affinity Real Estate Inc. participates in the Regional Multiple Listing Service of Minnesota, Inc Broker Reciprocity (sm) program, allowing us to display other broker's listings on our website. All properties are subject to prior sale, change or withdrawal.



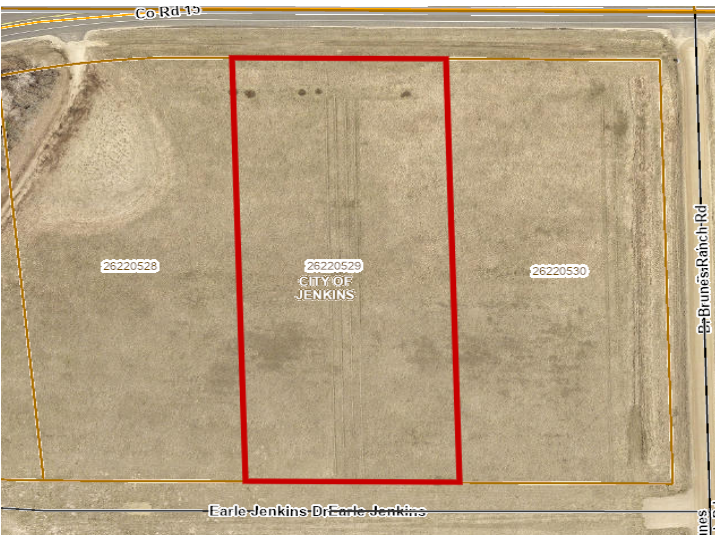
Call Affinity Real Estate

218-237-3333

info@affinityrealestate.com



Affinity Real Estate - 600 Park Avenue South - Park Rapids MN 56470



website: www.AffinityRealEstate.com | email: info@affinityrealestate.com | office: 218-237-3333 | fax: 218-237-3377



\$55,000
 MLS 6748300 Land
 TBD County Road 15
 Jenkins MN 56456