



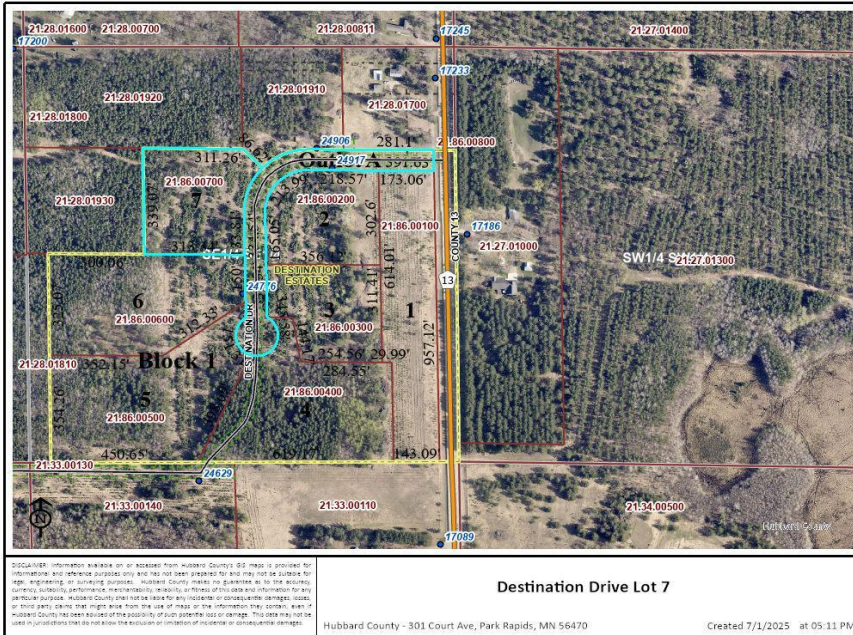
MLS 6748386 Land

**\$39,900**

2.5 Acres  
Raw Land

TBD Lot 7 Destination Drive  
Nevis MN 56467

Status: Pending



#### Description:

This Nevis country lot features over 2.5 acres of scenic privacy. Just minutes away from Downtown Nevis, the Heartland Trail and Paul Bunyan State Forest, this would be ideal location to build your dream home. Call for an appointment today.

#### Additional Details:

Lot Acres	2.5
Lot Dimensions	150x312x352x325x613
School District	308
Taxes	\$44
Taxes with Assessments	\$44
Tax Year	2025

#### Additional Features:

#### Driving Directions:

From Nevis Hwy 34/County 13, South on County 13 approx 4 miles to property sign on right.



Listed By:  
Wolff & Simon Real Estate

Affinity Real Estate Inc. participates in the Regional Multiple Listing Service of Minnesota, Inc Broker Reciprocity (sm) program, allowing us to display other broker's listings on our website. All properties are subject to prior sale, change or withdrawal.



Call Affinity Real Estate

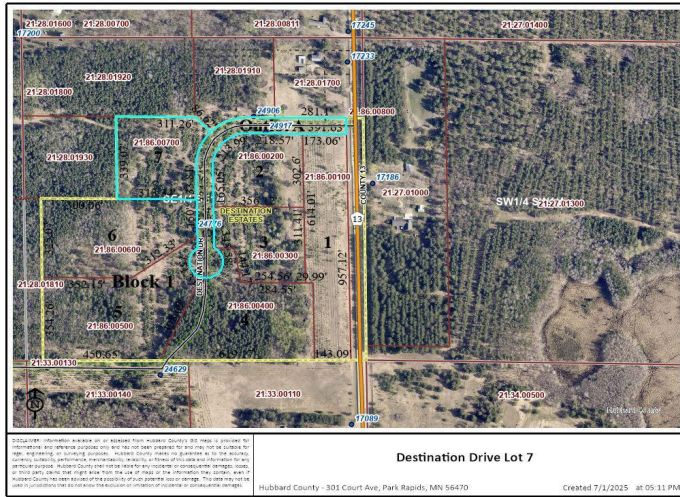
**218-237-3333**

[info@affinityrealestate.com](mailto:info@affinityrealestate.com)



Affinity Real Estate - 600 Park Avenue South - Park Rapids MN 56470





website: [www.AffinityRealEstate.com](http://www.AffinityRealEstate.com) | email: [info@affinityrealestate.com](mailto:info@affinityrealestate.com) | office: 218-237-3333 | fax: 218-237-3377



**\$39,900**  
 MLS 6748386 Land  
 TBD Lot 7 Destination Drive  
 Nevis MN 56467





website: [www.AffinityRealEstate.com](http://www.AffinityRealEstate.com) | email: [info@affinityrealestate.com](mailto:info@affinityrealestate.com) | office: 218-237-3333 | fax:218-237-3377



**\$39,900**  
MLS 6748386 Land  
TBD Lot 7 Destination Drive  
Nevis MN 56467