



MLS 6748613 Land

\$285,000

40.07 Acres
Raw Land

TBD 60th Street
Pequot Lakes MN 56472

Status: Active

Description:

Beautiful, private half parcels equalling 40 acres. Located a short drive from Pequot Lakes. This is perfect for the folks who want privacy, peace, and quiet with just a bit of wildlife. Enjoy the beauty of the pond with a cup of coffee. Great area for a new home.

Additional Details:

Lot Acres	40.07
Lot Dimensions	660 x1320
School District	2174
Taxes	\$82
Taxes with Assessments	\$148
Tax Year	2025

Additional Features:

Driving Directions:

From 371 N: Turn left onto Patriot Ave. Turn Right onto County Hwy 17, Cty Rd 17. Turn left on 25th Ave SW. Turn Right onto 60th ST SW. Look for "For Sale" Signs



Listed By:
Coldwell Banker Realty

Affinity Real Estate Inc. participates in the Regional Multiple Listing Service of Minnesota, Inc Broker Reciprocity (sm) program, allowing us to display other broker's listings on our website. All properties are subject to prior sale, change or withdrawal.



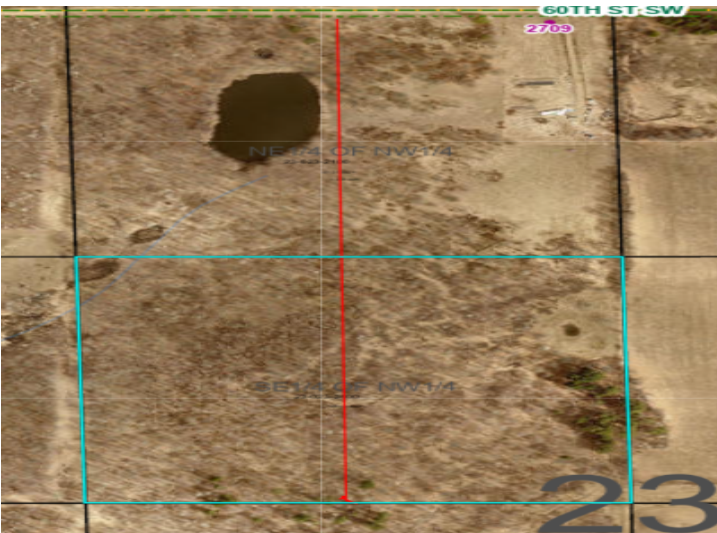
Call Affinity Real Estate

218-237-3333

info@affinityrealestate.com



Affinity Real Estate - 600 Park Avenue South - Park Rapids MN 56470



website: www.AffinityRealEstate.com | email: info@affinityrealestate.com | office: 218-237-3333 | fax:218-237-3377



\$285,000
MLS 6748613 Land
TBD 60th Street
Pequot Lakes MN 56472

website: www.AffinityRealEstate.com | email: info@affinityrealestate.com | office: 218-237-3333 | fax:218-237-3377



\$285,000
MLS 6748613 Land
TBD 60th Street
Pequot Lakes MN 56472