



MLS 6748624 Residential

\$375,000

1,350 sq ft
3 bedrooms
2 baths

31423 Isabelle Drive
Pequot Lakes MN 56472

Status: Hold

Description:

Completed and move-in ready Welcome to Trailside Estates, a premier new housing development in the heart of Pequot Lakes, offering 20 exclusive units designed for modern comfort and timeless elegance. This stunning 3-bedroom, 2-bath home features custom cabinets, granite countertops, luxury finishes, a cozy fireplace, a covered patio, and a charming covered porch. Residents will enjoy direct access to the renowned Paul Bunyan Trail, as well as a community park and playground, making it the perfect blend of outdoor recreation and serene living. Conveniently located near local amenities, Trailside Estates is your gateway to the best of Pequot Lakes living.

Additional Details:

| | |
|------------------------|----------------|
| Year Built | 2025 |
| Lot Acres | 0.35 |
| Lot Dimensions | 65x145x120x145 |
| Garage Stalls | 2 |
| School District | 186 |
| Taxes | \$48 |
| Taxes with Assessments | \$48 |
| Tax Year | 2024 |

Additional Features:

Basement: None **Fuel:** Natural Gas **Garage:** 2 **Heat:** Forced Air, Fireplace(s) **Sewer:** City Sewer/Connected **Water:** City Water/Connected **Air Conditioning:** Central Air

Driving Directions:

From Main St in Pequot Lakes, head North on Rasmussen Rd .4 miles. Take Left on Isabelle Dr into Trailside Estates Development



Listed By:
Woods to Water Real Estate

Affinity Real Estate Inc. participates in the Regional Multiple Listing Service of Minnesota, Inc Broker Reciprocity (sm) program, allowing us to display other broker's listings on our website. All properties are subject to prior sale, change or withdrawal.



Call Affinity Real Estate

218-237-3333

info@affinityrealestate.com



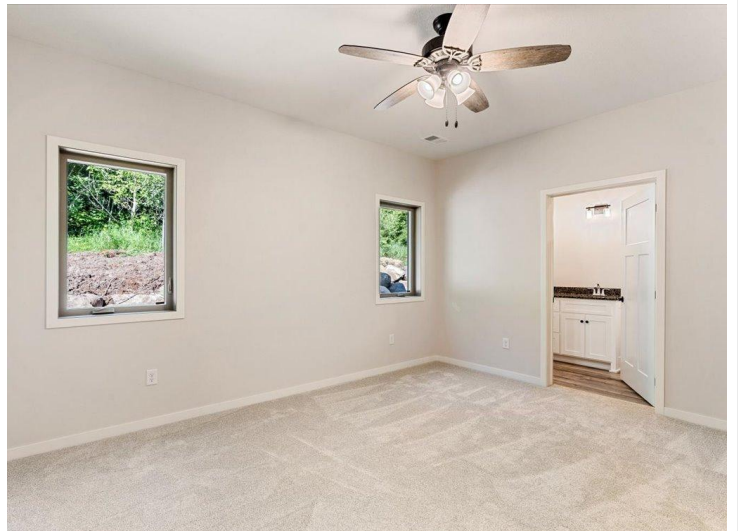
Affinity Real Estate - 600 Park Avenue South - Park Rapids MN 56470



website: www.AffinityRealEstate.com | email: info@affinityrealestate.com | office: 218-237-3333 | fax: 218-237-3377



\$375,000
 MLS 6748624 Residential
 31423 Isabelle Drive
 Pequot Lakes MN 56472



website: www.AffinityRealEstate.com | email: info@affinityrealestate.com | office: 218-237-3333 | fax: 218-237-3377



\$375,000
 MLS 6748624 Residential
 31423 Isabelle Drive
 Pequot Lakes MN 56472



website: www.AffinityRealEstate.com | email: info@affinityrealestate.com | office: 218-237-3333 | fax: 218-237-3377



\$375,000
 MLS 6748624 Residential
 31423 Isabelle Drive
 Pequot Lakes MN 56472

website: www.AffinityRealEstate.com | email: info@affinityrealestate.com | office: 218-237-3333 | fax:218-237-3377



\$375,000

MLS 6748624 Residential
31423 Isabelle Drive
Pequot Lakes MN 56472