



MLS 6748729 Commercial

\$699,000

4479 County 5
Hackensack MN 56452

Status: Active

Description:

Unique commercial opportunity in Hackensack! Explore the potential of this spacious 15,700 sq. ft. commercial building, formerly home to a movie theater and now ready to be repurposed. Located just on the outskirts of town, this versatile property features a welcoming front foyer with a service counter—ideal for reception or retail functions—plus four expansive open workspaces that once served as individual theaters. These large, adaptable rooms offer endless layout possibilities for office suites, event space, co-working studios, fitness/wellness uses, retail showrooms, and more. With ample square footage and a solid infrastructure, this is a one-of-a-kind building ready to support your next business venture or investment. Bring your vision and breathe new life into this distinctive property!

Additional Details:

Year Built	2006
Lot Acres	3.9
Lot Dimensions	Approx. 350' x 500' x 350' x 405' x 195' x 8' x 191' x 50'
School District	113
Taxes	\$12,134
Taxes with Assessments	\$12,134
Tax Year	2025

Additional Features:

Fuel: Propane **Heat:** Forced Air **Sewer:** City Sewer/Connected **Water:** City Water/Connected **Air Conditioning:** Central Air

Driving Directions:

From the Hwy 371 and Lake Ave intersection in the center of Downtown Hackensack, North on Hwy 371 - East on CR 5 NW - Property is on the South



Listed By:
Close-Converse Commercial Prop

Affinity Real Estate Inc. participates in the Regional Multiple Listing Service of Minnesota, Inc Broker Reciprocity (sm) program, allowing us to display other broker's listings on our website. All properties are subject to prior sale, change or withdrawal.



Call Affinity Real Estate

218-237-3333

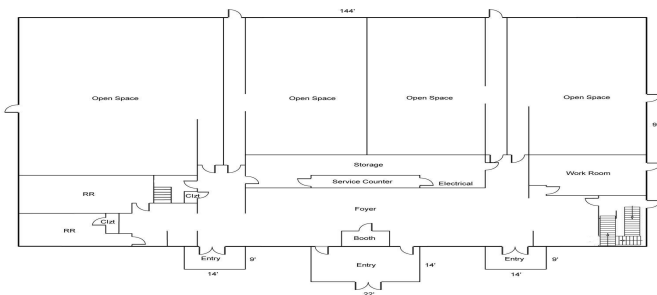
info@affinityrealestate.com



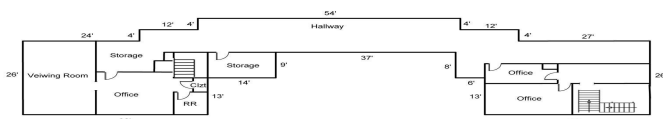
Affinity Real Estate - 600 Park Avenue South - Park Rapids MN 56470



Main Level



Upper Level



website: www.AffinityRealEstate.com | email: info@affinityrealestate.com | office: 218-237-3333 | fax: 218-237-3377



\$699,000
 MLS 6748729 Commercial
 4479 County 5
 Hackensack MN 56452



website: www.AffinityRealEstate.com | email: info@affinityrealestate.com | office: 218-237-3333 | fax: 218-237-3377

Affinity
REAL ESTATE INC

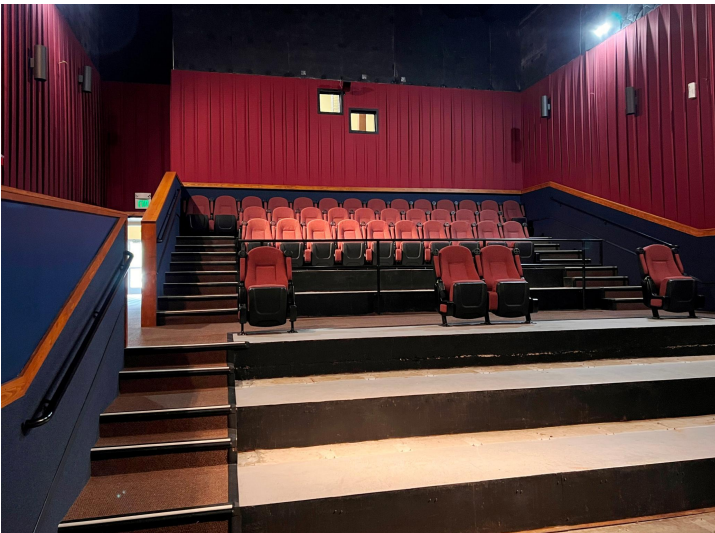
\$699,000
MLS 6748729 Commercial
4479 County 5
Hackensack MN 56452



website: www.AffinityRealEstate.com | email: info@affinityrealestate.com | office: 218-237-3333 | fax: 218-237-3377

Affinity
REAL ESTATE INC

\$699,000
MLS 6748729 Commercial
4479 County 5
Hackensack MN 56452



website: www.AffinityRealEstate.com | email: info@affinityrealestate.com | office: 218-237-3333 | fax: 218-237-3377



\$699,000
 MLS 6748729 Commercial
 4479 County 5
 Hackensack MN 56452



website: www.AffinityRealEstate.com | email: info@affinityrealestate.com | office: 218-237-3333 | fax: 218-237-3377



\$699,000
 MLS 6748729 Commercial
 4479 County 5
 Hackensack MN 56452



website: www.AffinityRealEstate.com | email: info@affinityrealestate.com | office: 218-237-3333 | fax:218-237-3377



\$699,000
MLS 6748729 Commercial
4479 County 5
Hackensack MN 56452