



MLS 6748852 Lake Home

\$729,000

2,700 sq ft
5 bedrooms
3 baths

27842 Prairie Rose Road
Elbow Lake MN 56531

Waterfront: Pomme de Terre

Status: Active

Description:

Welcome to this Pomme De Terre Lake property with 100 feet of ideal lake frontage . Catch the Million Dollar views from this immaculate 5 bedroom 3 bathroom "turn key" property . As you enter this custom built home it is evident the attention to detail. The kitchen is a chef's dream featuring high end finishes, stainless appliances , an open dining area, spacious lakeside living room featuring a stone wall fireplace. Patio doors lead to the lakeside deck with an inviting place to lounge and overlook the extensive landscaped grounds. The lower level has in- floor heat throughout. Family room is inviting with a fireplace and a second kitchen area, great for entertaining. The triple garage is heated, with an extra workshop area. The amenities are endless at this stunning property, a perfect blend of indoor/outdoor living! An additional feature sheet is available with property items included. Call today!

Additional Details:

Year Built	2009
Lot Acres	0.55
Lot Dimensions	232 100 244 101
Garage Stalls	3
School District	2342
Taxes	\$2,322
Taxes with Assessments	\$2,322
Tax Year	2025

Additional Features:

Fuel: Propane **Heat:** Forced Air, Fireplace(s), Radiant Floor

Driving Directions:

East of Elbow Lake on Hwy 79. Left on County Rd 21 (at power station corner), right on Gilbert's Point Rd then at the "T" turn right on Prairie Rose Rd to home on the left.



Listed By:
Counselor Realty Inc of Alex

Affinity Real Estate Inc. participates in the Regional Multiple Listing Service of Minnesota, Inc Broker Reciprocity (sm) program, allowing us to display other broker's listings on our website. All properties are subject to prior sale, change or withdrawal.



Call Affinity Real Estate

218-237-3333

info@affinityrealestate.com



Affinity Real Estate - 600 Park Avenue South - Park Rapids MN 56470



website: www.AffinityRealEstate.com | email: info@affinityrealestate.com | office: 218-237-3333 | fax: 218-237-3377

Affinity
REAL ESTATE INC

\$729,000
MLS 6748852 Lake Home
27842 Prairie Rose Road
Elbow Lake MN 56531



website: www.AffinityRealEstate.com | email: info@affinityrealestate.com | office: 218-237-3333 | fax: 218-237-3377

Affinity
REAL ESTATE INC

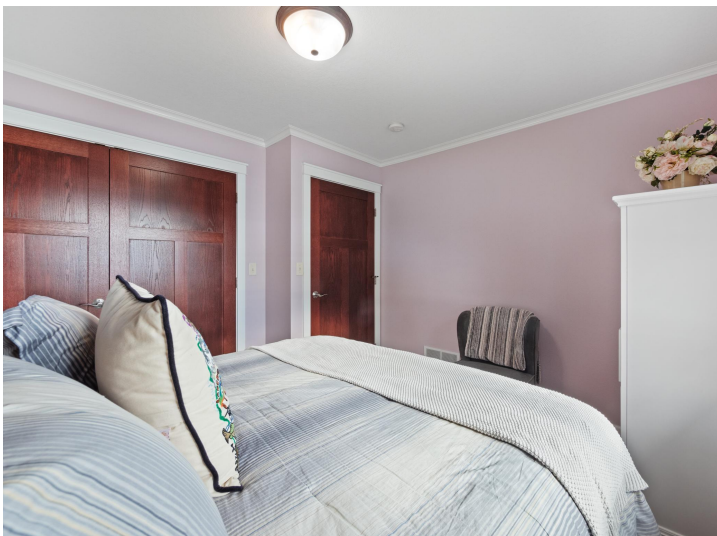
\$729,000
MLS 6748852 Lake Home
27842 Prairie Rose Road
Elbow Lake MN 56531



website: www.AffinityRealEstate.com | email: info@affinityrealestate.com | office: 218-237-3333 | fax: 218-237-3377

Affinity
REAL ESTATE INC

\$729,000
MLS 6748852 Lake Home
27842 Prairie Rose Road
Elbow Lake MN 56531



website: www.AffinityRealEstate.com | email: info@affinityrealestate.com | office: 218-237-3333 | fax: 218-237-3377

Affinity
REAL ESTATE INC

\$729,000
MLS 6748852 Lake Home
27842 Prairie Rose Road
Elbow Lake MN 56531



website: www.AffinityRealEstate.com | email: info@affinityrealestate.com | office: 218-237-3333 | fax: 218-237-3377

Affinity
REAL ESTATE INC

\$729,000

MLS 6748852 Lake Home
27842 Prairie Rose Road
Elbow Lake MN 56531



website: www.AffinityRealEstate.com | email: info@affinityrealestate.com | office: 218-237-3333 | fax: 218-237-3377



\$729,000
MLS 6748852 Lake Home
27842 Prairie Rose Road
Elbow Lake MN 56531



website: www.AffinityRealEstate.com | email: info@affinityrealestate.com | office: 218-237-3333 | fax: 218-237-3377

Affinity
REAL ESTATE INC

\$729,000
MLS 6748852 Lake Home
27842 Prairie Rose Road
Elbow Lake MN 56531



website: www.AffinityRealEstate.com | email: info@affinityrealestate.com | office: 218-237-3333 | fax: 218-237-3377

Affinity
REAL ESTATE INC

\$729,000
MLS 6748852 Lake Home
27842 Prairie Rose Road
Elbow Lake MN 56531



website: www.AffinityRealEstate.com | email: info@affinityrealestate.com | office: 218-237-3333 | fax: 218-237-3377

Affinity
REAL ESTATE INC

\$729,000

MLS 6748852 Lake Home
27842 Prairie Rose Road
Elbow Lake MN 56531