



MLS 6748893 Residential

**\$338,800**

2,696 sq ft  
4 bedrooms  
3 baths

1413 Bixby Avenue  
Bemidji MN 56601

Status: Active

**Description:**

Step into this stunning 4-bedroom, 2-bath home full of timeless charm and modern comfort. Featuring tall ceilings, rich dark trim, and elegant architectural details throughout, this classic beauty offers a warm and inviting atmosphere. The spacious layout includes updated amenities, giving you the best of both worlds.

Enjoy a beautifully maintained yard, a private outdoor patio for relaxing or entertaining, and a 2-car detached garage with attic storage. Located within walking distance to BSU, local restaurants, and conveniences, you'll love the unbeatable location.

This is more than a home—it's a piece of history waiting for its next chapter. Gorgeous, elegant, and move-in ready. A true must-see!

**Additional Details:**

Year Built	1934
Lot Acres	0.28
Lot Dimensions	87x140
Garage Stalls	2
School District	31
Taxes	\$3,214
Taxes with Assessments	\$3,516
Tax Year	2025

**Additional Features:**

**Basement:** Finished **Fuel:** Natural Gas **Garage:** 2 **Heat:** Forced Air **Sewer:** City Sewer/Connected **Water:** City Water/Connected **Air Conditioning:** Central Air

**Driving Directions:**

From Erbert and Gerberts go east one block. Turn Rt on Bixby property on Right



Listed By:  
218 Real Estate

Affinity Real Estate Inc. participates in the Regional Multiple Listing Service of Minnesota, Inc Broker Reciprocity (sm) program, allowing us to display other broker's listings on our website. All properties are subject to prior sale, change or withdrawal.



**Call Affinity Real Estate**

**218-237-3333**

**info@affinityrealestate.com**



**Affinity Real Estate - 600 Park Avenue South - Park Rapids MN 56470**





website: [www.AffinityRealEstate.com](http://www.AffinityRealEstate.com) | email: [info@affinityrealestate.com](mailto:info@affinityrealestate.com) | office: 218-237-3333 | fax: 218-237-3377

**Affinity**  
REAL ESTATE INC

**\$338,800**  
MLS 6748893 Residential  
1413 Bixby Avenue  
Bemidji MN 56601





website: [www.AffinityRealEstate.com](http://www.AffinityRealEstate.com) | email: [info@affinityrealestate.com](mailto:info@affinityrealestate.com) | office: 218-237-3333 | fax: 218-237-3377

**Affinity**  
REAL ESTATE INC

**\$338,800**  
MLS 6748893 Residential  
1413 Bixby Avenue  
Bemidji MN 56601



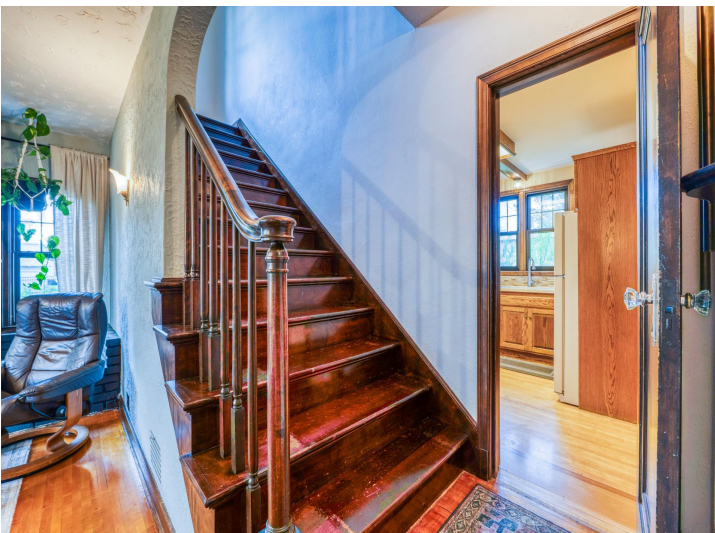


website: [www.AffinityRealEstate.com](http://www.AffinityRealEstate.com) | email: [info@affinityrealestate.com](mailto:info@affinityrealestate.com) | office: 218-237-3333 | fax: 218-237-3377

**Affinity**  
REAL ESTATE INC

**\$338,800**  
MLS 6748893 Residential  
1413 Bixby Avenue  
Bemidji MN 56601





website: [www.AffinityRealEstate.com](http://www.AffinityRealEstate.com) | email: [info@affinityrealestate.com](mailto:info@affinityrealestate.com) | office: 218-237-3333 | fax: 218-237-3377

**Affinity**  
REAL ESTATE INC

**\$338,800**  
MLS 6748893 Residential  
1413 Bixby Avenue  
Bemidji MN 56601



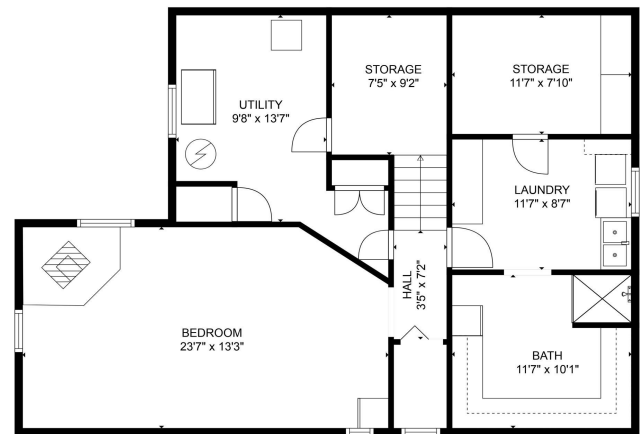


website: [www.AffinityRealEstate.com](http://www.AffinityRealEstate.com) | email: [info@affinityrealestate.com](mailto:info@affinityrealestate.com) | office: 218-237-3333 | fax: 218-237-3377

**Affinity**  
REAL ESTATE INC

**\$338,800**  
MLS 6748893 Residential  
1413 Bixby Avenue  
Bemidji MN 56601





TOTAL: 2384 sq. ft.  
 BELOW GROUND: 623 sq. ft. FLOOR 2: 905 sq. ft. FLOOR 3: 796 sq. ft.  
 EXCLUDED AREAS: UTILITY: 143 sq. ft. STORAGE: 161 sq. ft. FIREPLACE: 8 sq. ft.  
 WALLS: 196 sq. ft.  
 FLOOR PLAN CREATED BY CURICASA AIR MEASUREMENTS DEEMED HIGHLY RELIABLE BUT NOT GUARANTEED.

website: [www.AffinityRealEstate.com](http://www.AffinityRealEstate.com) | email: [info@affinityrealestate.com](mailto:info@affinityrealestate.com) | office: 218-237-3333 | fax: 218-237-3377

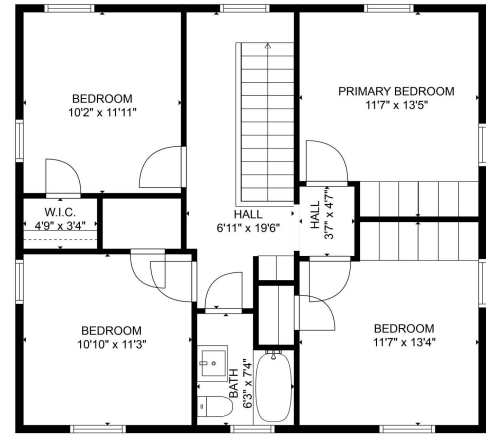
**Affinity**  
 REAL ESTATE INC

**\$338,800**  
 MLS 6748893 Residential  
 1413 Bixby Avenue  
 Bemidji MN 56601

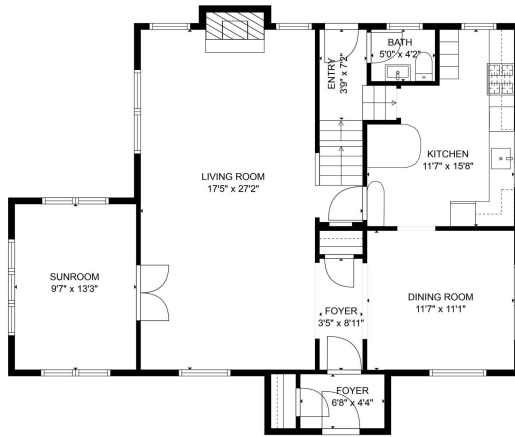




**TOTAL: 2384 sq. ft.**  
 BELOW GROUND: 623 sq. ft. FLOOR 2: 965 sq. ft. FLOOR 3: 796 sq. ft.  
 EXCLUDED AREAS: UTILITY: 143 sq. ft. STORAGE: 161 sq. ft. FIREPLACE: 8 sq. ft.  
 WALLS: 196 sq. ft.  
 FLOOR PLAN CREATED BY CURICASA APP. MEASUREMENTS DEEMED HIGHLY RELIABLE BUT NOT GUARANTEED.



**TOTAL: 2384 sq. ft.**  
 BELOW GROUND: 623 sq. ft. FLOOR 2: 965 sq. ft. FLOOR 3: 796 sq. ft.  
 EXCLUDED AREAS: UTILITY: 143 sq. ft. STORAGE: 161 sq. ft. FIREPLACE: 8 sq. ft.  
 WALLS: 196 sq. ft.  
 FLOOR PLAN CREATED BY CURICASA APP. MEASUREMENTS DEEMED HIGHLY RELIABLE BUT NOT GUARANTEED.



**TOTAL: 2384 sq. ft.**  
 BELOW GROUND: 623 sq. ft. FLOOR 2: 965 sq. ft. FLOOR 3: 796 sq. ft.  
 EXCLUDED AREAS: UTILITY: 143 sq. ft. STORAGE: 161 sq. ft. FIREPLACE: 8 sq. ft.  
 WALLS: 196 sq. ft.  
 FLOOR PLAN CREATED BY CURICASA APP. MEASUREMENTS DEEMED HIGHLY RELIABLE BUT NOT GUARANTEED.

website: [www.AffinityRealEstate.com](http://www.AffinityRealEstate.com) | email: [info@affinityrealestate.com](mailto:info@affinityrealestate.com) | office: 218-237-3333 | fax: 218-237-3377



**\$338,800**  
 MLS 6748893 Residential  
 1413 Bixby Avenue  
 Bemidji MN 56601