



MLS 6748938 Land

\$42,500

2.5 Acres
Raw Land

TBD Henrietta Avenue
Park Rapids MN 56470

Status: Active

Description:

Park Rapids - Nicely wooded, large city lot that has 2.5 acres, new driveway and clearing area that is ready for your next home. Utilities runs in the roadway easement, making it very easy to connect. City water is also available, not city sewer. Location is perfect, close to everything downtown Park Rapids has to offer and far enough away to give you some elbow room. \$42,500

Additional Details:

Lot Acres	2.5
Lot Dimensions	250x443
School District	309
Taxes	\$330
Taxes with Assessments	\$300
Tax Year	2025

Additional Features:

Driving Directions:

Park Rapids - take Highway 34 East to Henrietta Avenue S, turn South and proceed 1 1/2 miles and property will be on your right (West side).



Listed By:
Affinity Real Estate Inc.

Affinity Real Estate Inc. participates in the Regional Multiple Listing Service of Minnesota, Inc Broker Reciprocity (sm) program, allowing us to display other broker's listings on our website. All properties are subject to prior sale, change or withdrawal.



Call Affinity Real Estate

218-237-3333

info@affinityrealestate.com



Affinity Real Estate - 600 Park Avenue South - Park Rapids MN 56470



website: www.AffinityRealEstate.com | email: info@affinityrealestate.com | office: 218-237-3333 | fax: 218-237-3377



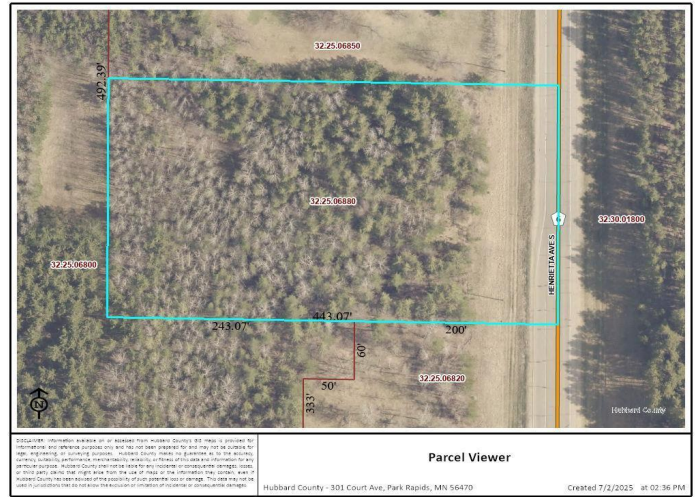
\$42,500
 MLS 6748938 Land
 TBD Henrietta Avenue
 Park Rapids MN 56470



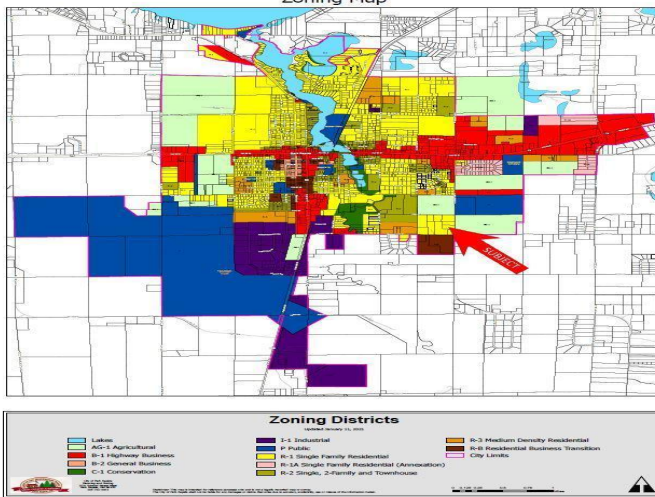
website: www.AffinityRealEstate.com | email: info@affinityrealestate.com | office: 218-237-3333 | fax: 218-237-3377



\$42,500
 MLS 6748938 Land
 TBD Henrietta Avenue
 Park Rapids MN 56470



City of Park Rapids
Zoning Map



website: www.AffinityRealEstate.com | email: info@affinityrealestate.com | office: 218-237-3333 | fax: 218-237-3377

Affinity
REAL ESTATE INC

\$42,500
MLS 6748938 Land
TBD Henrietta Avenue
Park Rapids MN 56470