



MLS 6748948 Lake Home

\$799,999

3,340 sq ft
4 bedrooms
3 baths

19059 County 13
Nevis MN 56467

Waterfront: Crow Wing River

Status: Active

Description:

One-of-a-Kind Full Log Home on 10+ Acres with River Frontage – Nevis, MN

Welcome to your private country retreat just minutes from the charming town of Nevis, Minnesota. Nestled on 10.18 beautifully wooded acres, this stunning full log home offers a rare combination of luxury, privacy, and natural beauty—perfectly positioned along 534 feet of Crow Wing River frontage as it flows out of the 7th Crow Wing Lake.

Step outside and enjoy professionally landscaped grounds, complete with two flowing water features, a lush apple orchard, and a raised, fenced vegetable garden tucked neatly behind a secure 20x24 garage with coded entry. Cut trails meander throughout the acreage, with three trailheads off the expansive backyard—ideal for walking, wildlife watching, or ATV adventures. Down by the river, a private campsite with fire pit and electric hookup invites unforgettable evenings under the stars.

Relax or entertain on the massive rear deck featuring a custom-built, covered spa, all overlooking your own slice of northern Minnesota paradise.

Inside, this spacious home boasts over 3,100 sq ft across three levels, with in-floor heating throughout to keep things cozy year-round. With 5 total bedrooms, there's room for everyone—including a private guest suite in the fully finished basement, where you'll find your very own custom wood bar and lounge, styled like a classic northern Minnesota sports bar, complete with TVs, pool table/Foosball area, and plenty of space to unwind or entertain.

Whether you're looking for a year-round residence, a family retreat, or a legacy property with endless potential, this rare country gem delivers rustic charm, modern amenities, and unmatched tranquility—all just outside of Nevis.

Don't miss your opportunity to own this extraordinary riverfront property—schedule your private showing today!

Additional Details:

Year Built 2008
Lot Acres 10.18

Lot Dimensions 1079x654x1310



Listed By
Coldwell Banker Crown Realtors

School District 308

Affinity Real Estate Inc. participates in the Regional Multiple Listing Service of Minnesota, Inc Broker Reciprocity (sm) program, allowing Taxed with Assessment listing on our website. All properties are subject to prior sale, change or withdrawal.
Tax Year 2025



Call Affinity Real Estate

218-237-3333

info@affinityrealestate.com



Affinity Real Estate - 600 Park Avenue South - Park Rapids MN 56470



website: www.AffinityRealEstate.com | email: info@affinityrealestate.com | office: 218-237-3333 | fax: 218-237-3377

Affinity
REAL ESTATE INC

\$799,999

MLS 6748948 Lake Home
19059 County 13
Nevis MN 56467

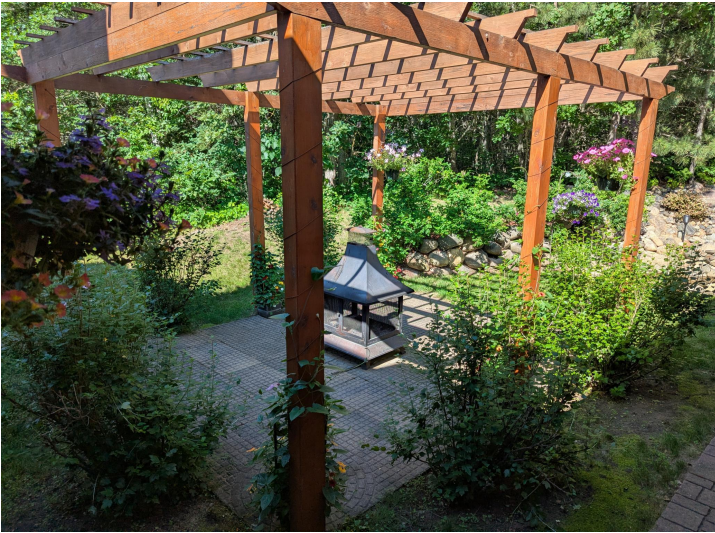


website: www.AffinityRealEstate.com | email: info@affinityrealestate.com | office: 218-237-3333 | fax: 218-237-3377

Affinity
REAL ESTATE INC

\$799,999

MLS 6748948 Lake Home
19059 County 13
Nevis MN 56467



website: www.AffinityRealEstate.com | email: info@affinityrealestate.com | office: 218-237-3333 | fax: 218-237-3377



\$799,999
MLS 6748948 Lake Home
19059 County 13
Nevis MN 56467

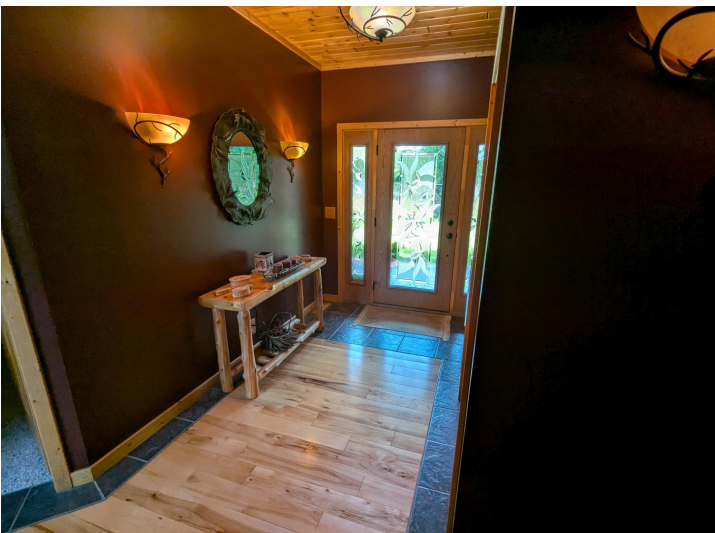


website: www.AffinityRealEstate.com | email: info@affinityrealestate.com | office: 218-237-3333 | fax: 218-237-3377

Affinity
REAL ESTATE INC

\$799,999

MLS 6748948 Lake Home
19059 County 13
Nevis MN 56467



website: www.AffinityRealEstate.com | email: info@affinityrealestate.com | office: 218-237-3333 | fax: 218-237-3377

Affinity
REAL ESTATE INC

\$799,999
MLS 6748948 Lake Home
19059 County 13
Nevis MN 56467



website: www.AffinityRealEstate.com | email: info@affinityrealestate.com | office: 218-237-3333 | fax: 218-237-3377

Affinity
REAL ESTATE INC

\$799,999
MLS 6748948 Lake Home
19059 County 13
Nevis MN 56467



website: www.AffinityRealEstate.com | email: info@affinityrealestate.com | office: 218-237-3333 | fax: 218-237-3377

Affinity
REAL ESTATE INC

\$799,999
MLS 6748948 Lake Home
19059 County 13
Nevis MN 56467



website: www.AffinityRealEstate.com | email: info@affinityrealestate.com | office: 218-237-3333 | fax: 218-237-3377



\$799,999
 MLS 6748948 Lake Home
 19059 County 13
 Nevis MN 56467



website: www.AffinityRealEstate.com | email: info@affinityrealestate.com | office: 218-237-3333 | fax: 218-237-3377

Affinity
REAL ESTATE INC

\$799,999
MLS 6748948 Lake Home
19059 County 13
Nevis MN 56467



website: www.AffinityRealEstate.com | email: info@affinityrealestate.com | office: 218-237-3333 | fax: 218-237-3377



\$799,999
 MLS 6748948 Lake Home
 19059 County 13
 Nevis MN 56467



website: www.AffinityRealEstate.com | email: info@affinityrealestate.com | office: 218-237-3333 | fax:218-237-3377



\$799,999

MLS 6748948 Lake Home
19059 County 13
Nevis MN 56467

website: www.AffinityRealEstate.com | email: info@affinityrealestate.com | office: 218-237-3333 | fax:218-237-3377



\$799,999

MLS 6748948 Lake Home
19059 County 13
Nevis MN 56467

website: www.AffinityRealEstate.com | email: info@affinityrealestate.com | office: 218-237-3333 | fax:218-237-3377



\$799,999

MLS 6748948 Lake Home
19059 County 13
Nevis MN 56467

website: www.AffinityRealEstate.com | email: info@affinityrealestate.com | office: 218-237-3333 | fax:218-237-3377



\$799,999

MLS 6748948 Lake Home
19059 County 13
Nevis MN 56467