



MLS 6749027 Residential Income

**\$169,900**

**Description:**

Take advantage of this excellent opportunity to own an income producing triplex in Staples, MN. This well-maintained property features 3 separate units offering a reliable monthly cash flow. Each unit features separate entrances and individual electrical meters. The main level offers two units; unit A is a 3 bed / 1 bath and unit B is a 1 bedroom / 1 bath. The upper-level unit is a 2 bedroom / 1 bath. Weather you are a seasoned investor or just entering the market, this is a turn-key property that checks all the boxes. Schedule your showing today to add this solid asset to your portfolio.

**Additional Details:**

Year Built	1950
Lot Acres	0.16
Lot Dimensions	138x50
Garage Stalls	1
School District	2170
Taxes	\$2,482
Taxes with Assessments	\$2,482
Tax Year	2024

**Additional Features:**

**Basement:** Block, Partial **Fuel:** Natural Gas **Garage:** 1 **Heat:** Boiler **Sewer:** City Sewer/Connected **Water:** City Water/Connected

**Driving Directions:**

From Highway 10 head north on 6th St. NE, turn east on 2nd Ave NE to address on left.



Listed By:  
eXp Realty

Affinity Real Estate Inc. participates in the Regional Multiple Listing Service of Minnesota, Inc Broker Reciprocity (sm) program, allowing us to display other broker's listings on our website. All properties are subject to prior sale, change or withdrawal.



**Call Affinity Real Estate**

**218-237-3333**

**info@affinityrealestate.com**



**Affinity Real Estate - 600 Park Avenue South - Park Rapids MN 56470**





website: [www.AffinityRealEstate.com](http://www.AffinityRealEstate.com) | email: [info@affinityrealestate.com](mailto:info@affinityrealestate.com) | office: 218-237-3333 | fax: 218-237-3377



**\$169,900**  
 MLS 6749027 Residential  
 Income  
 625 2nd Avenue  
 Staples MN 56479





website: [www.AffinityRealEstate.com](http://www.AffinityRealEstate.com) | email: [info@affinityrealestate.com](mailto:info@affinityrealestate.com) | office: 218-237-3333 | fax: 218-237-3377



**\$169,900**  
MLS 6749027 Residential  
Income  
625 2nd Avenue  
Staples MN 56479



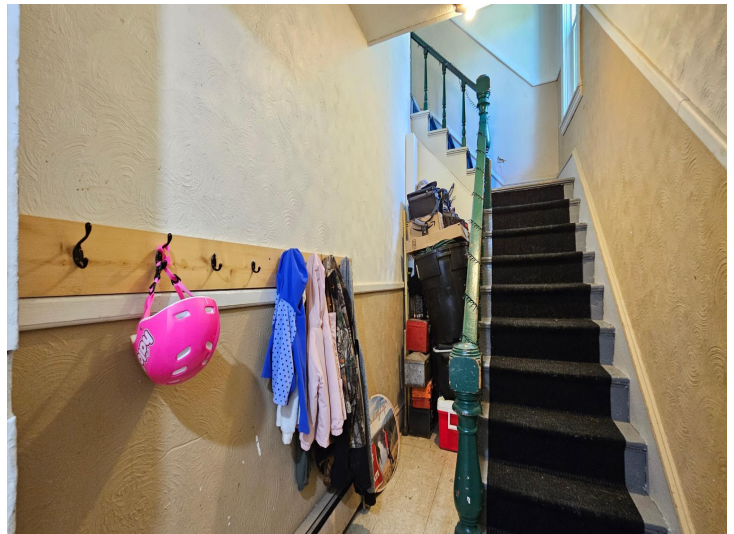


website: [www.AffinityRealEstate.com](http://www.AffinityRealEstate.com) | email: [info@affinityrealestate.com](mailto:info@affinityrealestate.com) | office: 218-237-3333 | fax: 218-237-3377

**Affinity**  
REAL ESTATE INC

**\$169,900**  
MLS 6749027 Residential  
Income  
625 2nd Avenue  
Staples MN 56479



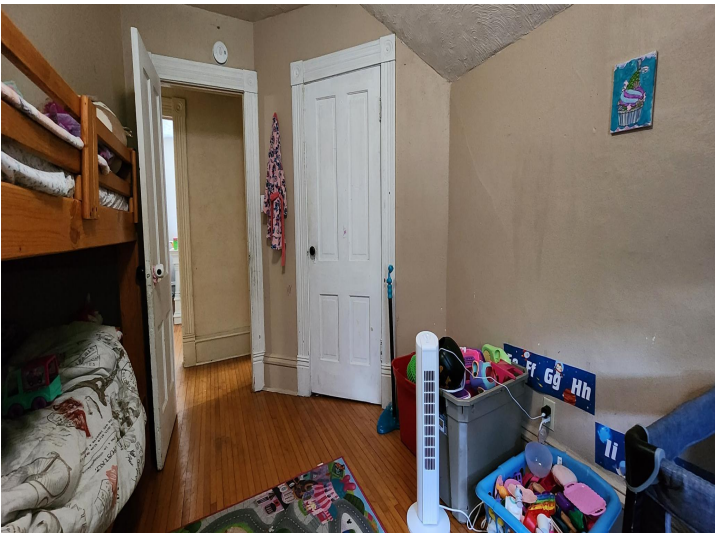
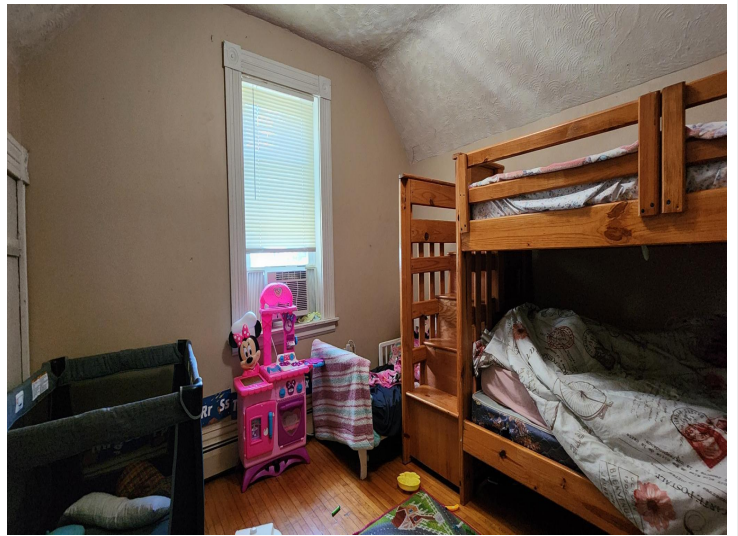
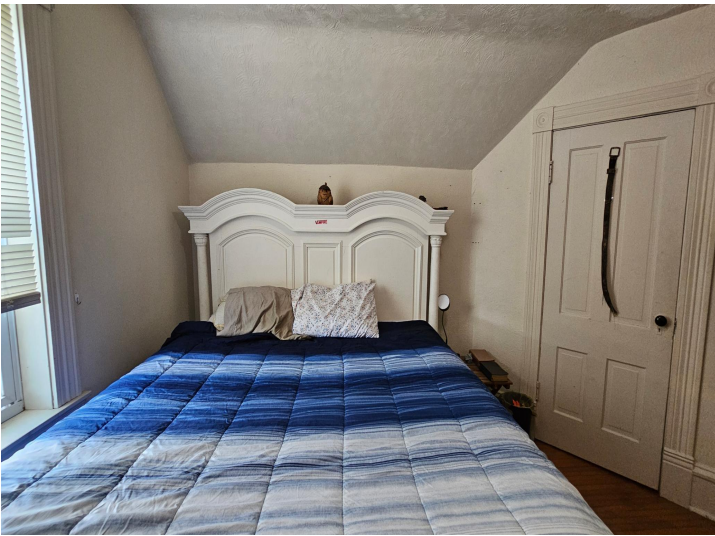


website: [www.AffinityRealEstate.com](http://www.AffinityRealEstate.com) | email: [info@affinityrealestate.com](mailto:info@affinityrealestate.com) | office: 218-237-3333 | fax: 218-237-3377

**Affinity**  
REAL ESTATE INC

**\$169,900**  
MLS 6749027 Residential  
Income  
625 2nd Avenue  
Staples MN 56479





website: [www.AffinityRealEstate.com](http://www.AffinityRealEstate.com) | email: [info@affinityrealestate.com](mailto:info@affinityrealestate.com) | office: 218-237-3333 | fax: 218-237-3377

**Affinity**  
REAL ESTATE INC

**\$169,900**  
MLS 6749027 Residential  
Income  
625 2nd Avenue  
Staples MN 56479





website: [www.AffinityRealEstate.com](http://www.AffinityRealEstate.com) | email: [info@affinityrealestate.com](mailto:info@affinityrealestate.com) | office: 218-237-3333 | fax: 218-237-3377

**Affinity**  
REAL ESTATE INC

**\$169,900**  
MLS 6749027 Residential  
Income  
625 2nd Avenue  
Staples MN 56479





website: [www.AffinityRealEstate.com](http://www.AffinityRealEstate.com) | email: [info@affinityrealestate.com](mailto:info@affinityrealestate.com) | office: 218-237-3333 | fax:218-237-3377



**\$169,900**  
MLS 6749027 Residential  
Income  
625 2nd Avenue  
Staples MN 56479