



MLS 6749418 Lake Home

\$375,000

2,236 sq ft
3 bedrooms
2 baths

31759 County 30
Laporte MN 56461

Waterfront: Horseshoe

Status: Active

Description:

Escape to your own Northwoods sanctuary at 31759 County 30 in Laporte. Nestled among towering pines and hardwoods, this beautifully crafted 3 bedroom, 2 bath home offers the perfect blend of rustic charm and modern comfort. With a mix of log and frame construction, this property provides warmth and character throughout.

Set on nearly 10 acres with 210 feet of shoreline on peaceful Horseshoe Lake, you'll enjoy unmatched privacy and direct access to fishing, kayaking, and nature watching right out your back door. The home features in-floor heat, a cozy fireplace, and an indoor sauna—perfect for warming up after a winter day outdoors. A clawfoot tub adds a touch of vintage elegance, and a large screened-in porch invites you to relax and unwind with serene woodland views.

Conveniently located between Laporte and Walker, and just minutes from legendary Leech Lake, this property makes an ideal year-round residence or Up North getaway.

Additional Details:

Year Built	1980
Lot Acres	9.89
Lot Dimensions	320x915x761x210x716x895
Garage Stalls	2
School District	306
Taxes	\$2,358
Taxes with Assessments	\$2,358
Tax Year	2025

Additional Features:

Basement: Partial **Fuel:** Electric, Propane, Wood **Garage:** 2 **Heat:** Baseboard, Fireplace(s) **Sewer:** Septic System Compliant - Yes **Water:** Submersible - 4 Inch, Private **Air Conditioning:** None

Driving Directions:

From Laporte, MN. South on 200 to County Road 30. Head west on County Road 30. Continue for approximately 1.5–2 miles to 31759 County 30.



Listed By:
Real Broker, LLC

Affinity Real Estate Inc. participates in the Regional Multiple Listing Service of Minnesota, Inc Broker Reciprocity (sm) program, allowing us to display other broker's listings on our website. All properties are subject to prior sale, change or withdrawal.



Call Affinity Real Estate

218-237-3333

info@affinityrealestate.com



Affinity Real Estate - 600 Park Avenue South - Park Rapids MN 56470



website: www.AffinityRealEstate.com | email: info@affinityrealestate.com | office: 218-237-3333 | fax: 218-237-3377

Affinity
REAL ESTATE INC

\$375,000
MLS 6749418 Lake Home
31759 County 30
Laporte MN 56461



website: www.AffinityRealEstate.com | email: info@affinityrealestate.com | office: 218-237-3333 | fax: 218-237-3377

Affinity
REAL ESTATE INC

\$375,000
MLS 6749418 Lake Home
31759 County 30
Laporte MN 56461



website: www.AffinityRealEstate.com | email: info@affinityrealestate.com | office: 218-237-3333 | fax: 218-237-3377

Affinity
REAL ESTATE INC

\$375,000
MLS 6749418 Lake Home
31759 County 30
Laporte MN 56461



website: www.AffinityRealEstate.com | email: info@affinityrealestate.com | office: 218-237-3333 | fax: 218-237-3377

Affinity
REAL ESTATE INC

\$375,000
MLS 6749418 Lake Home
31759 County 30
Laporte MN 56461



website: www.AffinityRealEstate.com | email: info@affinityrealestate.com | office: 218-237-3333 | fax: 218-237-3377

Affinity
REAL ESTATE INC

\$375,000
MLS 6749418 Lake Home
31759 County 30
Laporte MN 56461



website: www.AffinityRealEstate.com | email: info@affinityrealestate.com | office: 218-237-3333 | fax: 218-237-3377

Affinity
REAL ESTATE INC

\$375,000
MLS 6749418 Lake Home
31759 County 30
Laporte MN 56461



website: www.AffinityRealEstate.com | email: info@affinityrealestate.com | office: 218-237-3333 | fax: 218-237-3377

Affinity
REAL ESTATE INC

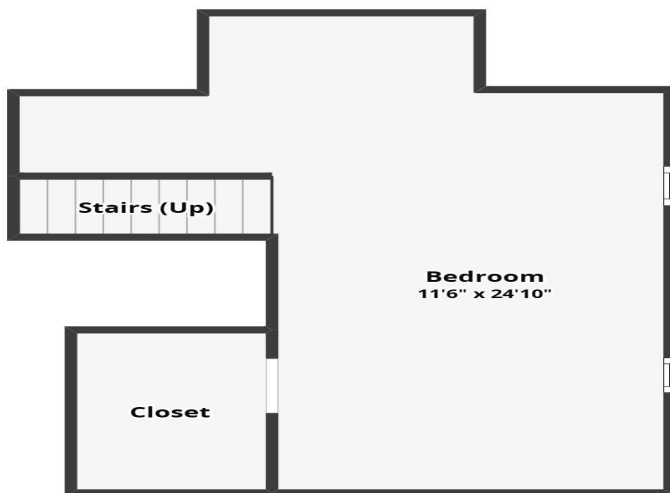
\$375,000
MLS 6749418 Lake Home
31759 County 30
Laporte MN 56461



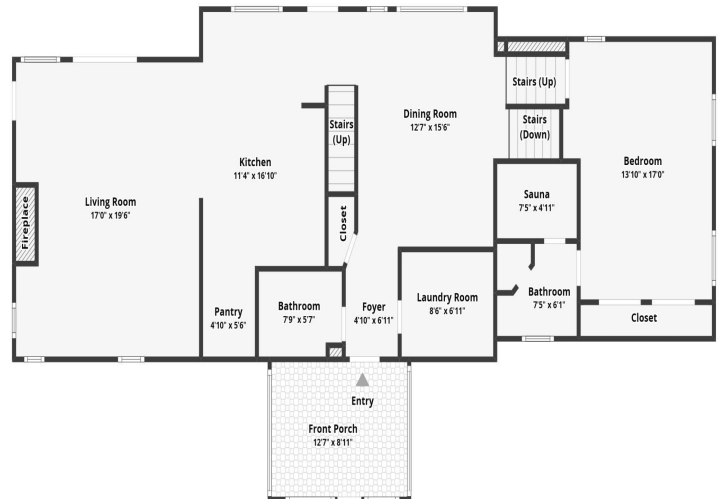
website: www.AffinityRealEstate.com | email: info@affinityrealestate.com | office: 218-237-3333 | fax: 218-237-3377



\$375,000
MLS 6749418 Lake Home
31759 County 30
Laporte MN 56461



All dimensions are approximate and subject to independent verification



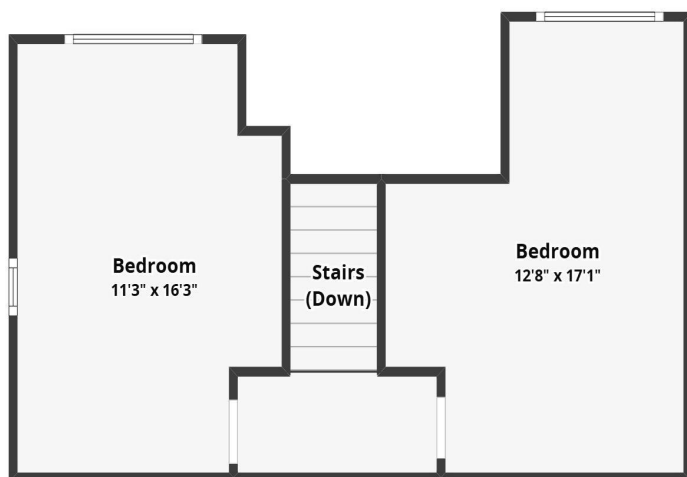
All dimensions are approximate and subject to independent verification

website: www.AffinityRealEstate.com | email: info@affinityrealestate.com | office: 218-237-3333 | fax: 218-237-3377



\$375,000

MLS 6749418 Lake Home
31759 County 30
Laporte MN 56461



All dimensions are approximate and subject to independent verification

website: www.AffinityRealEstate.com | email: info@affinityrealestate.com | office: 218-237-3333 | fax: 218-237-3377



\$375,000

MLS 6749418 Lake Home
31759 County 30
Laporte MN 56461