



MLS 6750037 Residential

\$284,900

2,171 sq ft
3 bedrooms
2 baths

39631 342nd Lane
Aitkin MN 56431

Status: Active

Description:

Ideally located on a quiet no-through road near the edge town. This quiet neighborhood offers the perfect setting for a retirement couple or growing family! Well maintained rambler-style home with 3 bedrooms and a full bathroom on the main level PLUS a finished lower level including a spare room (no egress), 3/4 bathroom and kitchenette. From the lower level you'll love that you can walkout into the beautifully landscaped & partially wooded oversized yard (a rare double lot) - providing 3 acres of privacy! This home is very energy efficient with the heating and cooling convenience of THREE A/C/heat mini-split units as well as a fully functional wood burning fireplace. Enjoy peaceful evenings out back on the deck overlooking a nature-filled backdrop with fenced grassy space for the (furry?) kids to play. Easy to maintain footprint including a 2-car attached garage with a BONUS 22x18 detached garage for all your seasonal toys. You'll love the easy access to local lakes & trails, as well as, shopping, restaurants and Aitkin's top ranked medical center. Set up your showing ASAP - this one won't be available for long!

Additional Details:

Year Built	1976
Lot Acres	3.3
Lot Dimensions	435x320x605x290
Garage Stalls	3
School District	8001
Taxes	\$824
Taxes with Assessments	\$824
Tax Year	2025

Additional Features:

Fuel: Electric, Wood **Heat:** Baseboard, Ductless Mini-Split, Fireplace(s)

Driving Directions:

GPS Recommended; From stoplight in Aitkin, follow Minnesota Ave to take left at Hwy 47 follow 1.1 mile to take a right on Deer St (Cty Rd 12). Go 1 mile and take a left on 342nd Lane. Follow to end of the road. See FOR SALE sign.



Listed By:
RE/MAX Northland

Affinity Real Estate Inc. participates in the Regional Multiple Listing Service of Minnesota, Inc Broker Reciprocity (sm) program, allowing us to display other broker's listings on our website. All properties are subject to prior sale, change or withdrawal.



Call Affinity Real Estate

218-237-3333

info@affinityrealestate.com



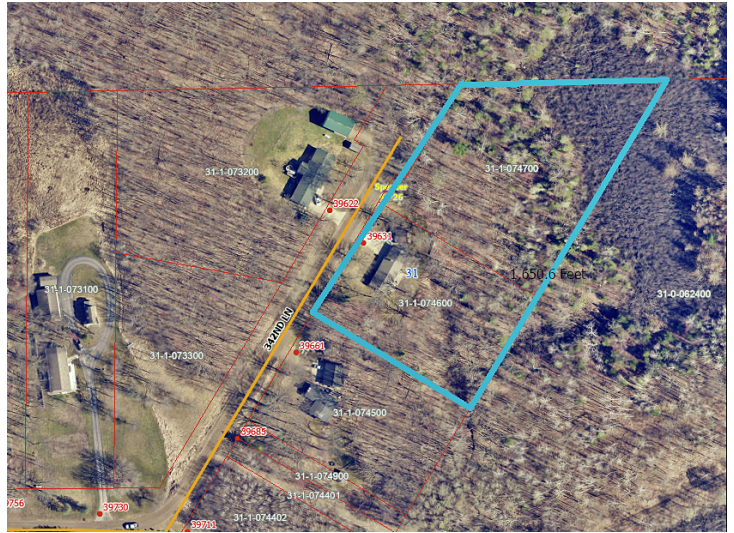
Affinity Real Estate - 600 Park Avenue South - Park Rapids MN 56470



website: www.AffinityRealEstate.com | email: info@affinityrealestate.com | office: 218-237-3333 | fax: 218-237-3377



\$284,900
 MLS 6750037 Residential
 39631 342nd Lane
 Aitkin MN 56431



Page 3 of 8

website: www.AffinityRealEstate.com | email: info@affinityrealestate.com | office: 218-237-3333 | fax:218-237-3377



\$284,900

MLS 6750037 Residential
39631 342nd Lane
Aitkin MN 56431

website: www.AffinityRealEstate.com | email: info@affinityrealestate.com | office: 218-237-3333 | fax:218-237-3377



\$284,900

MLS 6750037 Residential
39631 342nd Lane
Aitkin MN 56431

website: www.AffinityRealEstate.com | email: info@affinityrealestate.com | office: 218-237-3333 | fax:218-237-3377



\$284,900

MLS 6750037 Residential
39631 342nd Lane
Aitkin MN 56431

website: www.AffinityRealEstate.com | email: info@affinityrealestate.com | office: 218-237-3333 | fax:218-237-3377



\$284,900

MLS 6750037 Residential
39631 342nd Lane
Aitkin MN 56431

website: www.AffinityRealEstate.com | email: info@affinityrealestate.com | office: 218-237-3333 | fax:218-237-3377



\$284,900

MLS 6750037 Residential
39631 342nd Lane
Aitkin MN 56431