



MLS 6750096 Residential

\$299,900

1,069 sq ft
3 bedrooms
1 baths

650 Stone Lake Road
Bemidji MN 56601

Status: Active

Description:

Charming 3-Bedroom Home on 5 Acres Just Minutes from Bemidji!

Welcome to your slice of country living just a couple miles from the heart of Bemidji! Nestled on a beautiful 5-acre lot, this well-maintained 3-bedroom, 1-bath home offers privacy, and room to grow.

The main home features a full unfinished basement—perfect for storage or future expansion—and is complemented by a large detached garage, ideal for hobbies or extra storage. A separate 3-stall, 3-sided carport provides even more space for vehicles, boats, or outdoor equipment.

Also included on the property is a charming 1-bedroom, 1-bath accessory dwelling unit (ADU) with its own attached single garage. This space has been lovingly used by family members but offers great potential for rental income, a guest house, or a private office.

If you're looking for a peaceful rural setting close to town, this property checks all the boxes—space, versatility, and location!

Additional Details:

Year Built	1976
Lot Acres	5
Lot Dimensions	335x650
Garage Stalls	4
School District	31
Taxes	\$3,370
Taxes with Assessments	\$3,370
Tax Year	2025

Additional Features:

Basement: Block, Unfinished **Fuel:** Propane **Garage:** 4 **Heat:** Ductless Mini-Split, Forced Air **Sewer:** Private Sewer **Water:** Private **Air Conditioning:** Ductless Mini-Split

Driving Directions:

Division St to right on Stone Lake Rd NW, follow to property on the right.



Listed By:
Real Broker, LLC

Affinity Real Estate Inc. participates in the Regional Multiple Listing Service of Minnesota, Inc Broker Reciprocity (sm) program, allowing us to display other broker's listings on our website. All properties are subject to prior sale, change or withdrawal.



Call Affinity Real Estate

218-237-3333

info@affinityrealestate.com



Affinity Real Estate - 600 Park Avenue South - Park Rapids MN 56470



website: www.AffinityRealEstate.com | email: info@affinityrealestate.com | office: 218-237-3333 | fax: 218-237-3377



\$299,900
MLS 6750096 Residential
650 Stone Lake Road
Bemidji MN 56601



website: www.AffinityRealEstate.com | email: info@affinityrealestate.com | office: 218-237-3333 | fax: 218-237-3377



\$299,900
 MLS 6750096 Residential
 650 Stone Lake Road
 Bemidji MN 56601



website: www.AffinityRealEstate.com | email: info@affinityrealestate.com | office: 218-237-3333 | fax: 218-237-3377

Affinity
REAL ESTATE INC

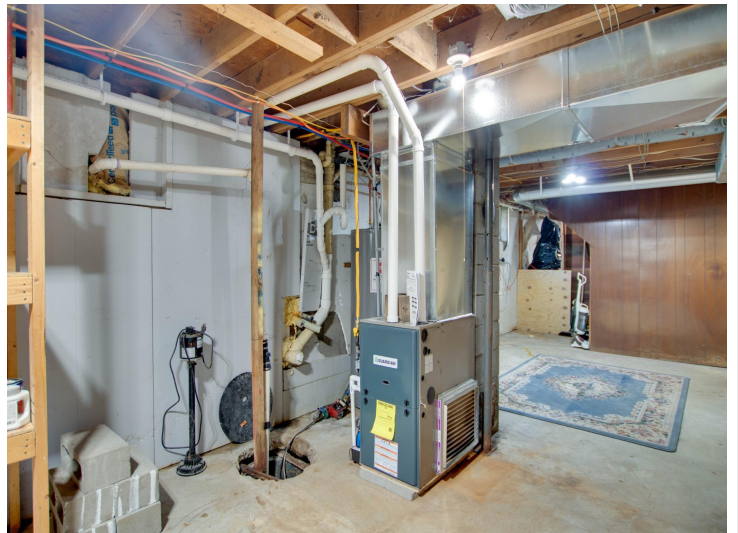
\$299,900
MLS 6750096 Residential
650 Stone Lake Road
Bemidji MN 56601



website: www.AffinityRealEstate.com | email: info@affinityrealestate.com | office: 218-237-3333 | fax: 218-237-3377

Affinity
REAL ESTATE INC

\$299,900
MLS 6750096 Residential
650 Stone Lake Road
Bemidji MN 56601



website: www.AffinityRealEstate.com | email: info@affinityrealestate.com | office: 218-237-3333 | fax: 218-237-3377

Affinity
REAL ESTATE INC

\$299,900
MLS 6750096 Residential
650 Stone Lake Road
Bemidji MN 56601



website: www.AffinityRealEstate.com | email: info@affinityrealestate.com | office: 218-237-3333 | fax: 218-237-3377

Affinity
REAL ESTATE INC

\$299,900
MLS 6750096 Residential
650 Stone Lake Road
Bemidji MN 56601



website: www.AffinityRealEstate.com | email: info@affinityrealestate.com | office: 218-237-3333 | fax: 218-237-3377

Affinity
REAL ESTATE INC

\$299,900
MLS 6750096 Residential
650 Stone Lake Road
Bemidji MN 56601



website: www.AffinityRealEstate.com | email: info@affinityrealestate.com | office: 218-237-3333 | fax: 218-237-3377



\$299,900
MLS 6750096 Residential
650 Stone Lake Road
Bemidji MN 56601