



MLS 6750761 Residential

\$549,900

4,200 sq ft
4 bedrooms
3 baths

15170 141st Avenue
Wadena MN 56482

Status: Active

Description:

Discover this stunning 4,200 sq ft country estate on 24 acres near Wadena, MN, offering a perfect blend of luxury and nature. This 4-bedroom, 3-bathroom home features a dedicated office, a three-season porch with serene woodland views, and a walk-out basement patio ideal for entertaining. Modern amenities include a reverse osmosis water system, new water softener, new septic system, updated appliances, and a whole-home generator for uninterrupted power. Enjoy cozy evenings by the wood-burning fireplace, with additional heating from an owned 500-pound propane tank and a 500-gallon oil UST. The property boasts a two-stall insulated attached garage, a detached heated shop with a bathroom, and a pole barn with lean-to for ample storage. Surrounded by mature oak and apple trees, a creek, and a pond, this land is a hunter's paradise with an enclosed stand and multiple food plot locations for deer and turkey. A concrete storm room with a vault door ensures safety, making this estate a rare gem for those seeking tranquility and self-sufficiency.

Additional Details:

Year Built	1976
Lot Acres	23.8
Lot Dimensions	23.8ac
Garage Stalls	8
School District	2155
Taxes	\$3,442
Taxes with Assessments	\$3,442
Tax Year	2025

Additional Features:

Basement: Egress Window(s), Finished, Full, Storage Space, Walkout **Fuel:** Oil, Propane **Garage:** 8 **Heat:** Forced Air, Fireplace(s) **Sewer:** Private Sewer, Tank with Drainage Field **Water:** Private, Well **Air Conditioning:** Central Air

Driving Directions:

From Wadena, head west on county road 4. Turn Left on 141st Ave. The home is the first one on the right.



Listed By:
American Legacy Land Co., LLC

Affinity Real Estate Inc. participates in the Regional Multiple Listing Service of Minnesota, Inc Broker Reciprocity (sm) program, allowing us to display other broker's listings on our website. All properties are subject to prior sale, change or withdrawal.



Call Affinity Real Estate

218-237-3333

info@affinityrealestate.com



Affinity Real Estate - 600 Park Avenue South - Park Rapids MN 56470



website: www.AffinityRealEstate.com | email: info@affinityrealestate.com | office: 218-237-3333 | fax: 218-237-3377



\$549,900
 MLS 6750761 Residential
 15170 141st Avenue
 Wadena MN 56482



website: www.AffinityRealEstate.com | email: info@affinityrealestate.com | office: 218-237-3333 | fax: 218-237-3377



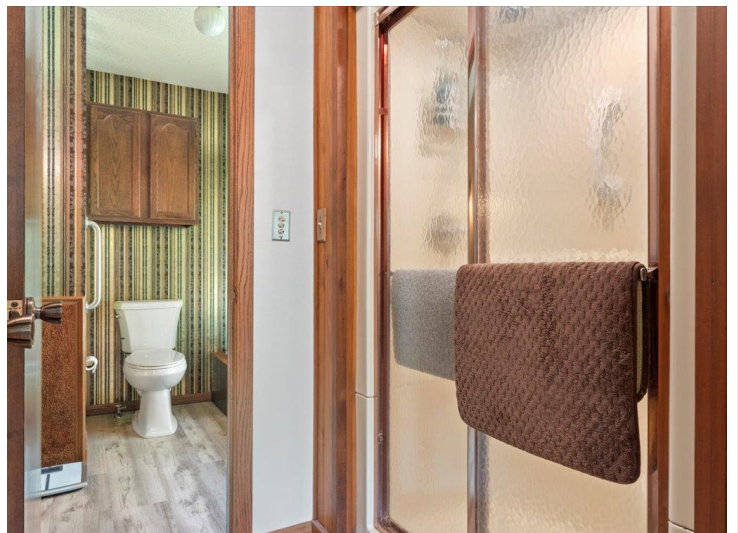
\$549,900
 MLS 6750761 Residential
 15170 141st Avenue
 Wadena MN 56482



website: www.AffinityRealEstate.com | email: info@affinityrealestate.com | office: 218-237-3333 | fax: 218-237-3377

Affinity
REAL ESTATE INC

\$549,900
MLS 6750761 Residential
15170 141st Avenue
Wadena MN 56482



website: www.AffinityRealEstate.com | email: info@affinityrealestate.com | office: 218-237-3333 | fax: 218-237-3377



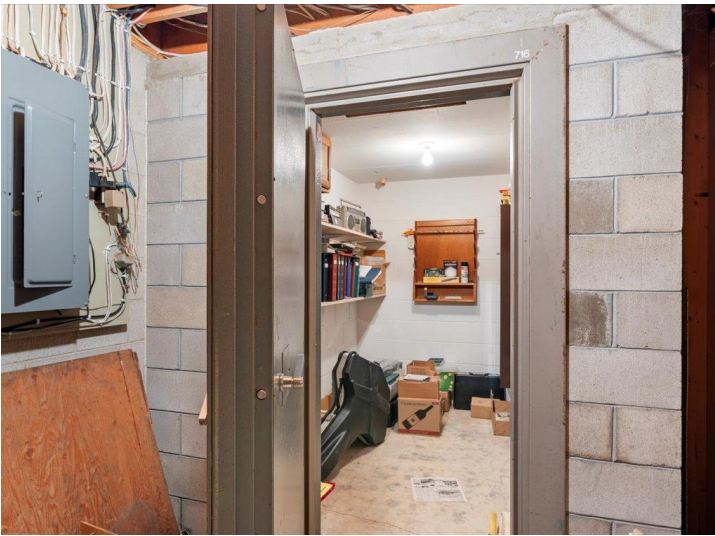
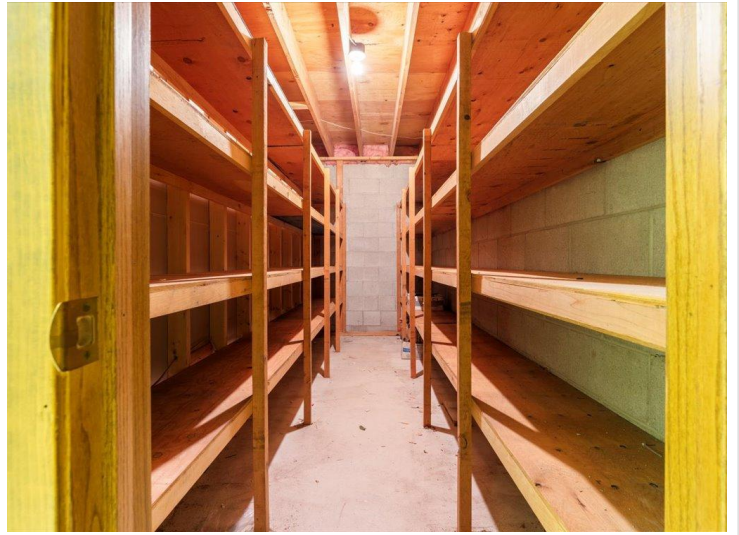
\$549,900
MLS 6750761 Residential
15170 141st Avenue
Wadena MN 56482



website: www.AffinityRealEstate.com | email: info@affinityrealestate.com | office: 218-237-3333 | fax: 218-237-3377

Affinity
REAL ESTATE INC

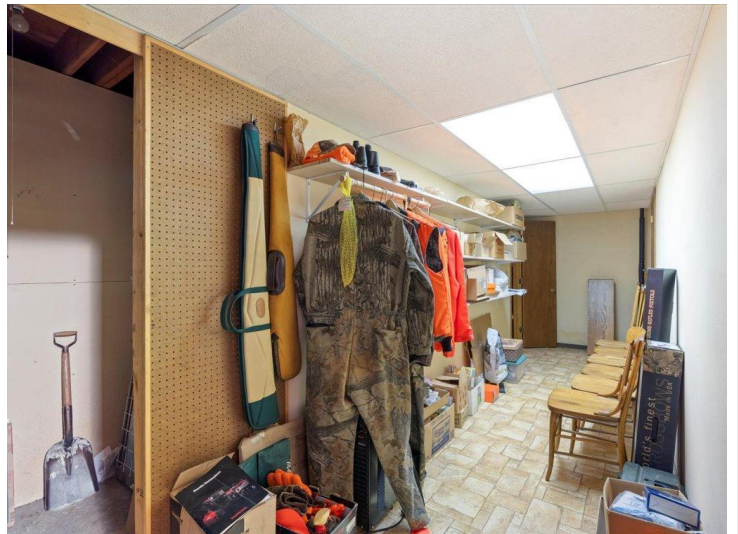
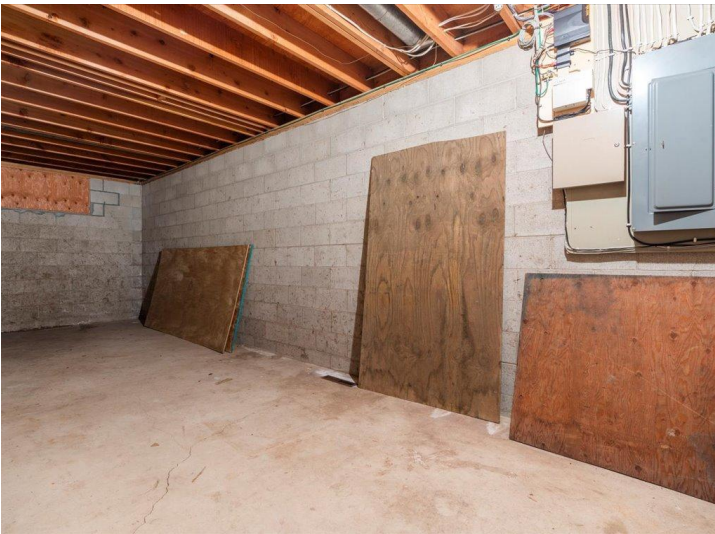
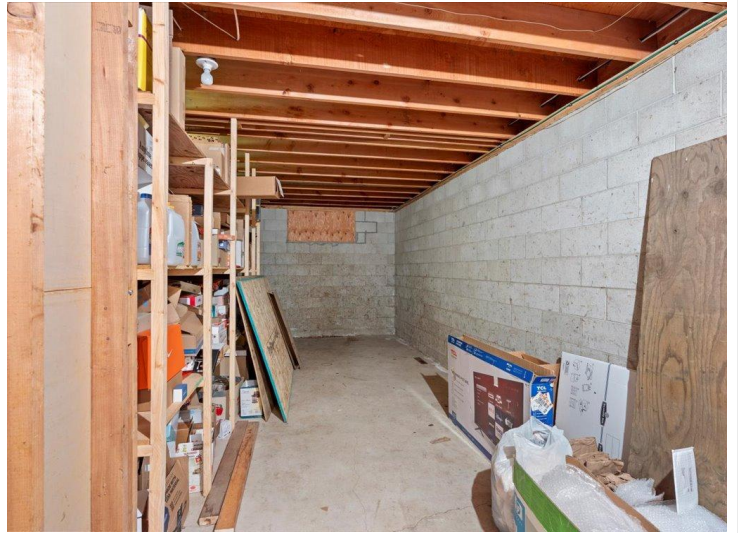
\$549,900
MLS 6750761 Residential
15170 141st Avenue
Wadena MN 56482



website: www.AffinityRealEstate.com | email: info@affinityrealestate.com | office: 218-237-3333 | fax: 218-237-3377



\$549,900
 MLS 6750761 Residential
 15170 141st Avenue
 Wadena MN 56482



website: www.AffinityRealEstate.com | email: info@affinityrealestate.com | office: 218-237-3333 | fax: 218-237-3377

Affinity
REAL ESTATE INC

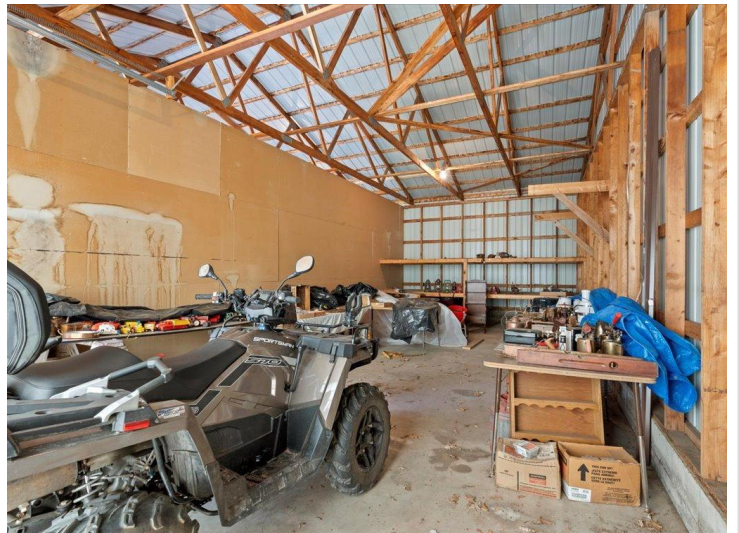
\$549,900
MLS 6750761 Residential
15170 141st Avenue
Wadena MN 56482



website: www.AffinityRealEstate.com | email: info@affinityrealestate.com | office: 218-237-3333 | fax: 218-237-3377



\$549,900
 MLS 6750761 Residential
 15170 141st Avenue
 Wadena MN 56482



website: www.AffinityRealEstate.com | email: info@affinityrealestate.com | office: 218-237-3333 | fax: 218-237-3377

Affinity
REAL ESTATE INC

\$549,900
MLS 6750761 Residential
15170 141st Avenue
Wadena MN 56482



website: www.AffinityRealEstate.com | email: info@affinityrealestate.com | office: 218-237-3333 | fax: 218-237-3377

Affinity
REAL ESTATE INC

\$549,900
MLS 6750761 Residential
15170 141st Avenue
Wadena MN 56482