



MLS 6750773 Residential

\$260,000

2,704 sq ft
3 bedrooms
2 baths

1119 Beltrami Avenue
Bemidji MN 56601

Status: Active

Description:

Spacious 3+BR/2BA Arts & Crafts Style Home – Walk to BSU and Downtown Bemidji! Charming and renovated 1.5-story home in turn-key condition. Located within walking distance to BSU, local parks, and Bemidji's vibrant downtown. Features beautiful maple floors, an updated tiled bathroom, a bright and functional kitchen, fresh replica windows, updated forced air furnace and central air. Enjoy the stunning above-grade deck and the convenience of an attached garage. If you love quality and affordability this home would be a great choice.

Additional Details:

Year Built	1916
Lot Acres	0.16
Lot Dimensions	50x140
Garage Stalls	2
School District	31
Taxes	\$2,348
Taxes with Assessments	\$2,348
Tax Year	2025

Additional Features:

Basement: Full, Concrete, Partially Finished, Walkout **Fuel:** Natural Gas **Garage:** 2 **Heat:** Forced Air **Sewer:** City Sewer/Connected **Water:** City Water/Connected **Air Conditioning:** Central Air

Driving Directions:

North on Bemidji Rd, left on 11th St, right on Beltrami Ave. #1119 on the left.



Listed By:
Century 21 Dickinson

Affinity Real Estate Inc. participates in the Regional Multiple Listing Service of Minnesota, Inc Broker Reciprocity (sm) program, allowing us to display other broker's listings on our website. All properties are subject to prior sale, change or withdrawal.



Call Affinity Real Estate

218-237-3333

info@affinityrealestate.com



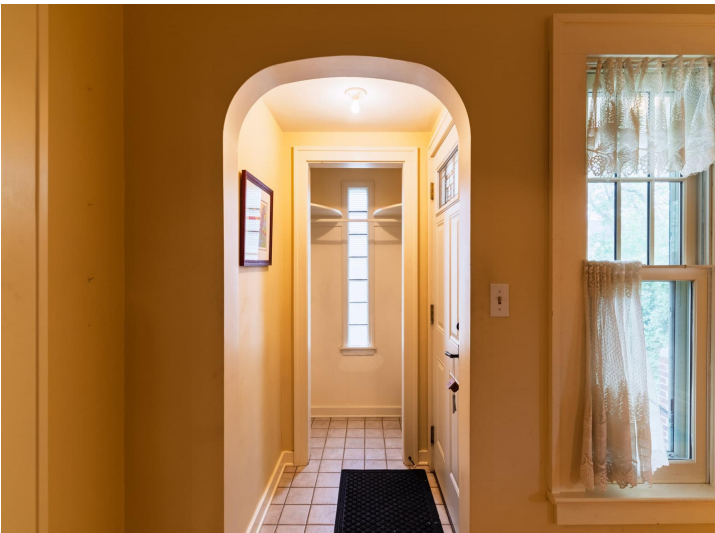
Affinity Real Estate - 600 Park Avenue South - Park Rapids MN 56470



website: www.AffinityRealEstate.com | email: info@affinityrealestate.com | office: 218-237-3333 | fax: 218-237-3377

Affinity
REAL ESTATE INC

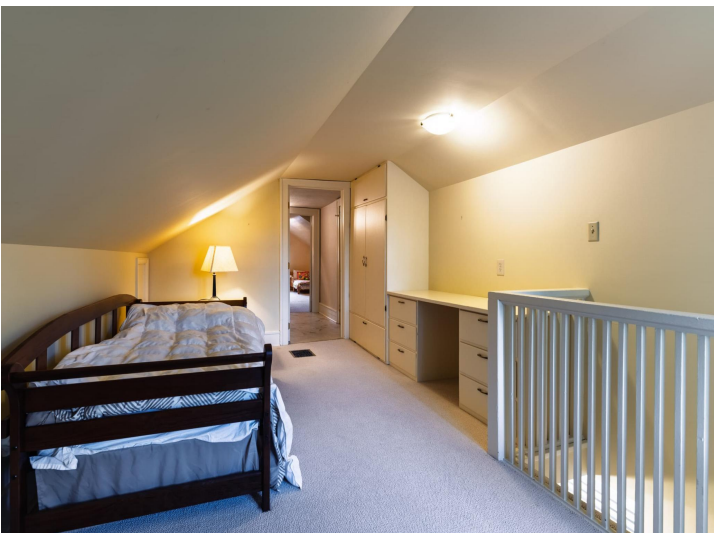
\$260,000
MLS 6750773 Residential
1119 Beltrami Avenue
Bemidji MN 56601



website: www.AffinityRealEstate.com | email: info@affinityrealestate.com | office: 218-237-3333 | fax: 218-237-3377

Affinity
REAL ESTATE INC

\$260,000
MLS 6750773 Residential
1119 Beltrami Avenue
Bemidji MN 56601



website: www.AffinityRealEstate.com | email: info@affinityrealestate.com | office: 218-237-3333 | fax: 218-237-3377



\$260,000
 MLS 6750773 Residential
 1119 Beltrami Avenue
 Bemidji MN 56601



website: www.AffinityRealEstate.com | email: info@affinityrealestate.com | office: 218-237-3333 | fax: 218-237-3377



\$260,000
 MLS 6750773 Residential
 1119 Beltrami Avenue
 Bemidji MN 56601



website: www.AffinityRealEstate.com | email: info@affinityrealestate.com | office: 218-237-3333 | fax: 218-237-3377

Affinity
REAL ESTATE INC

\$260,000
MLS 6750773 Residential
1119 Beltrami Avenue
Bemidji MN 56601

website: www.AffinityRealEstate.com | email: info@affinityrealestate.com | office: 218-237-3333 | fax:218-237-3377



\$260,000

MLS 6750773 Residential
1119 Beltrami Avenue
Bemidji MN 56601