



MLS 6750930 Residential

\$249,000

1,676 sq ft
3 bedrooms
2 baths

215 Charles Avenue
Detroit Lakes MN 56501

Status: Pending

Description:

CHARMER ON CHARLES ST. 3 bedroom -- 2 bathroom -- 2,324 sq ft -- 1 stall attached garage -- 1 stall detached garage -- 2016 F/A Furnace. Additional info: Solid well taken care of home with convenient location, partially fenced yard and an additional garage accessed through ally on East side. Lower-level family room and an additional bedroom if egress window added. Hardwood floors, granite counters in kitchen and cozy fireplace in living room. Paint allowance.

Additional Details:

Year Built	1965
Lot Acres	0.27
Lot Dimensions	irr
Garage Stalls	1
School District	22
Taxes	\$2,020
Taxes with Assessments	\$2,020
Tax Year	2025

Additional Features:

Basement: Partial, Concrete, Unfinished **Fuel:** Natural Gas **Garage:** 1 **Heat:** Forced Air **Sewer:** City Sewer/Connected **Water:** City Water/Connected **Air Conditioning:** Central Air

Driving Directions:

Roosevelt Ave to Central Street East to Charles. 215 Charles Ave.



Listed By:
Re/Max Lakes Region

Affinity Real Estate Inc. participates in the Regional Multiple Listing Service of Minnesota, Inc Broker Reciprocity (sm) program, allowing us to display other broker's listings on our website. All properties are subject to prior sale, change or withdrawal.



Call Affinity Real Estate

218-237-3333

info@affinityrealestate.com



Affinity Real Estate - 600 Park Avenue South - Park Rapids MN 56470



website: www.AffinityRealEstate.com | email: info@affinityrealestate.com | office: 218-237-3333 | fax: 218-237-3377

Affinity
REAL ESTATE INC

\$249,000
MLS 6750930 Residential
215 Charles Avenue
Detroit Lakes MN 56501



website: www.AffinityRealEstate.com | email: info@affinityrealestate.com | office: 218-237-3333 | fax: 218-237-3377



\$249,000
 MLS 6750930 Residential
 215 Charles Avenue
 Detroit Lakes MN 56501



website: www.AffinityRealEstate.com | email: info@affinityrealestate.com | office: 218-237-3333 | fax: 218-237-3377

Affinity
REAL ESTATE INC

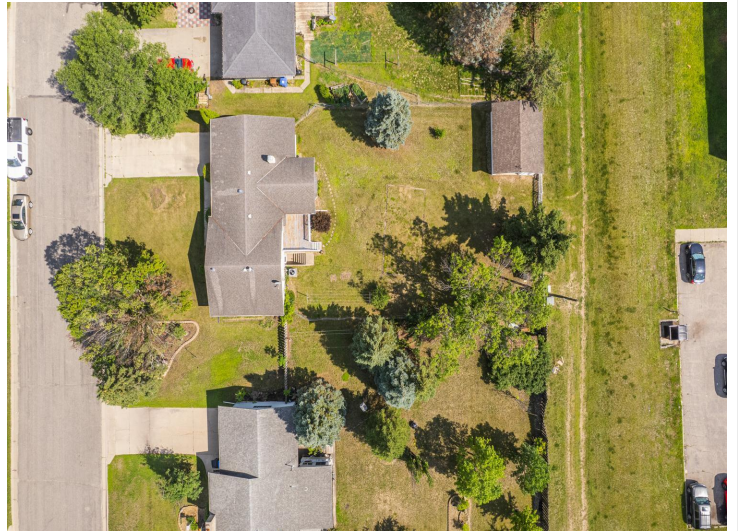
\$249,000
MLS 6750930 Residential
215 Charles Avenue
Detroit Lakes MN 56501



website: www.AffinityRealEstate.com | email: info@affinityrealestate.com | office: 218-237-3333 | fax: 218-237-3377

Affinity
REAL ESTATE INC

\$249,000
MLS 6750930 Residential
215 Charles Avenue
Detroit Lakes MN 56501



website: www.AffinityRealEstate.com | email: info@affinityrealestate.com | office: 218-237-3333 | fax: 218-237-3377

Affinity
REAL ESTATE INC

\$249,000
MLS 6750930 Residential
215 Charles Avenue
Detroit Lakes MN 56501