



MLS 6750956 Residential

**\$475,000**

2,523 sq ft  
4 bedrooms  
3 baths

6210 County 38  
Walker MN 56484

Status: Pending

**Description:**

Experience comfortable, accessible living in this stunning one-level home situated on 1.13 acres with breathtaking winter views of Leach Lake. The open-concept floor plan boasts soaring vaulted ceilings and beautiful hardwood floors that enhance the spacious, airy feel. Gather around the elegant stone gas fireplace, perfect for cozy evenings. Designed for ease and convenience, the main floor features a laundry area and is fully handicap accessible, ensuring comfort for all. Enjoy outdoor living with both front and back decks that provide tranquil spots to soak in the natural beauty. The home is finished with durable, low-maintenance cement board siding, complemented by a two-car garage and a sizable steel pole barn with space for four additional vehicles or recreational toys—ideal for car enthusiasts or those needing extra storage. ¼ miles to Leach Lake access and 2 miles to town. Septic and brand new drain tile has been installed.

**Additional Details:**

Year Built	2007
Lot Acres	1.13
Lot Dimensions	116x304x203x305
Garage Stalls	6
School District	693
Taxes	\$1,616
Taxes with Assessments	\$1,616
Tax Year	2025

**Additional Features:**

**Basement:** Daylight/Lookout Windows, Drain Tiled, Egress Window(s), Finished, Full, Storage Space, Wood **Fuel:** Array **Garage:** 6 **Heat:** Forced Air **Sewer:** Septic System Compliant - Yes, Tank with Drainage Field **Water:** 4-Inch Submersible, Private, Well **Air Conditioning:** Central Air

**Driving Directions:**

MN - 210 onto Hwy 64, Right onto Hwy 34, Left onto Hwy 371 to Home.



Listed By:  
Edina Realty, Inc.

Affinity Real Estate Inc. participates in the Regional Multiple Listing Service of Minnesota, Inc Broker Reciprocity (sm) program, allowing us to display other broker's listings on our website. All properties are subject to prior sale, change or withdrawal.



Call Affinity Real Estate

**218-237-3333**

[info@affinityrealestate.com](mailto:info@affinityrealestate.com)



Affinity Real Estate - 600 Park Avenue South - Park Rapids MN 56470



website: [www.AffinityRealEstate.com](http://www.AffinityRealEstate.com) | email: [info@affinityrealestate.com](mailto:info@affinityrealestate.com) | office: 218-237-3333 | fax: 218-237-3377

**Affinity**  
REAL ESTATE INC

**\$475,000**  
MLS 6750956 Residential  
6210 County 38  
Walker MN 56484



website: [www.AffinityRealEstate.com](http://www.AffinityRealEstate.com) | email: [info@affinityrealestate.com](mailto:info@affinityrealestate.com) | office: 218-237-3333 | fax:218-237-3377

**Affinity**  
REAL ESTATE INC

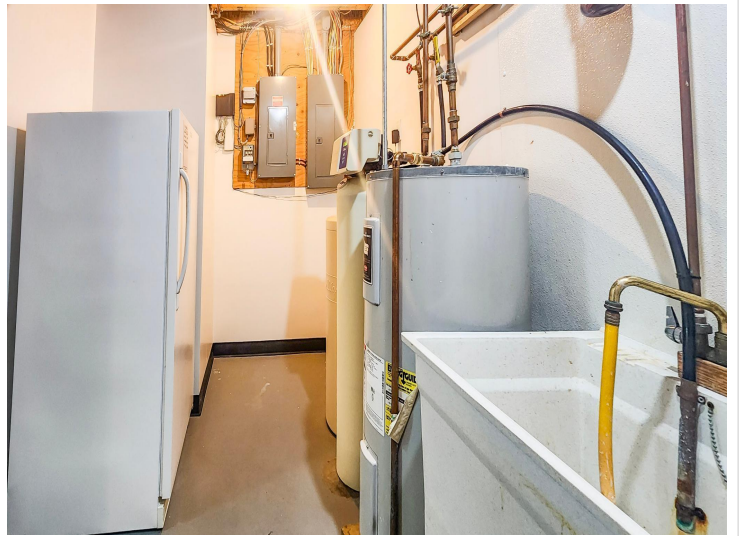
**\$475,000**  
MLS 6750956 Residential  
6210 County 38  
Walker MN 56484



website: [www.AffinityRealEstate.com](http://www.AffinityRealEstate.com) | email: [info@affinityrealestate.com](mailto:info@affinityrealestate.com) | office: 218-237-3333 | fax:218-237-3377



**\$475,000**  
MLS 6750956 Residential  
6210 County 38  
Walker MN 56484



website: [www.AffinityRealEstate.com](http://www.AffinityRealEstate.com) | email: [info@affinityrealestate.com](mailto:info@affinityrealestate.com) | office: 218-237-3333 | fax: 218-237-3377

**Affinity**  
REAL ESTATE INC

**\$475,000**  
MLS 6750956 Residential  
6210 County 38  
Walker MN 56484



website: [www.AffinityRealEstate.com](http://www.AffinityRealEstate.com) | email: [info@affinityrealestate.com](mailto:info@affinityrealestate.com) | office: 218-237-3333 | fax:218-237-3377



**\$475,000**  
MLS 6750956 Residential  
6210 County 38  
Walker MN 56484



website: [www.AffinityRealEstate.com](http://www.AffinityRealEstate.com) | email: [info@affinityrealestate.com](mailto:info@affinityrealestate.com) | office: 218-237-3333 | fax:218-237-3377



**\$475,000**  
MLS 6750956 Residential  
6210 County 38  
Walker MN 56484